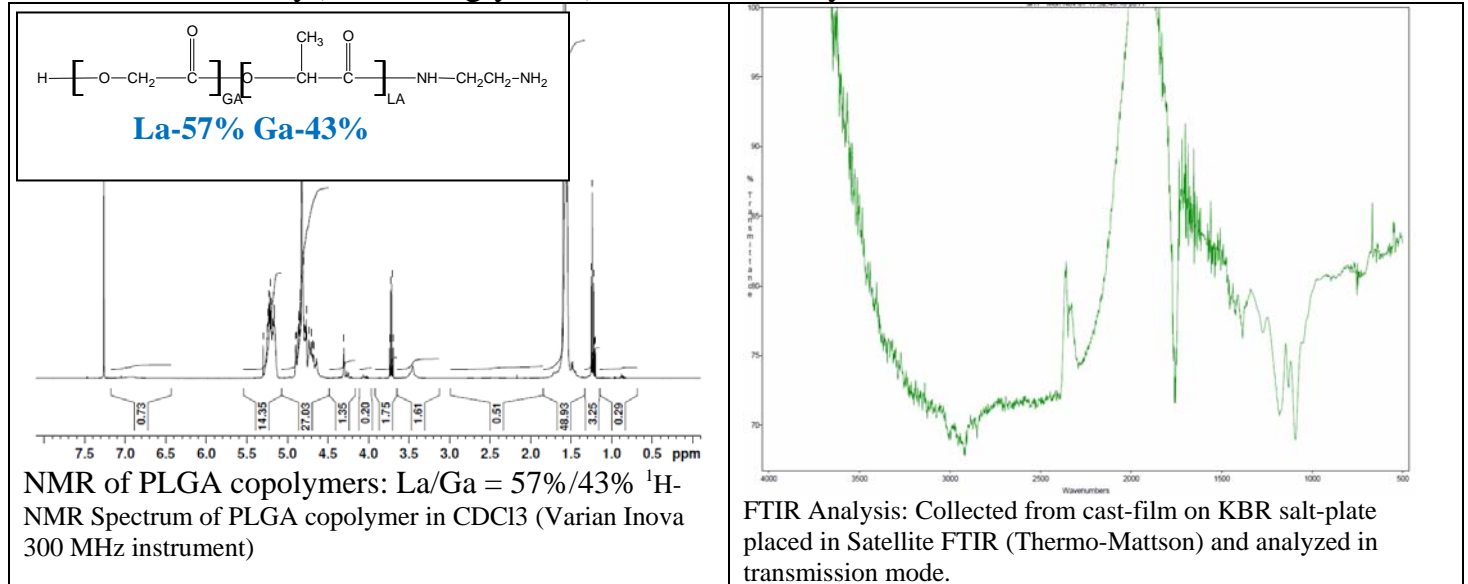
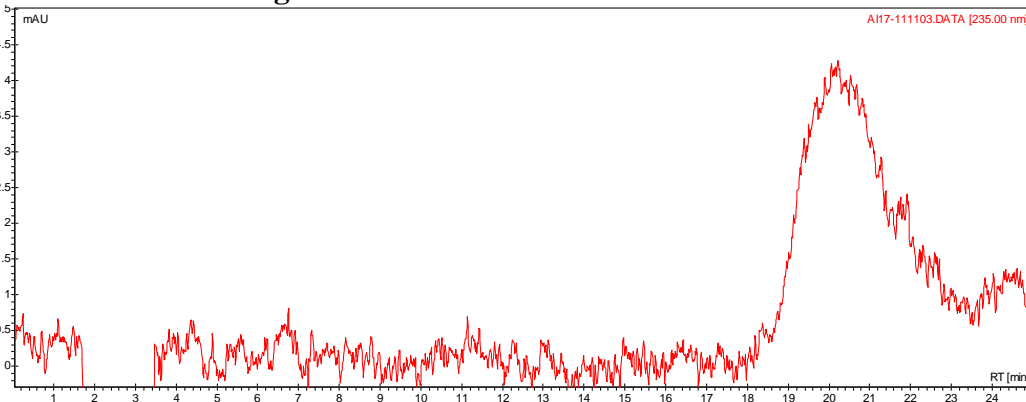


Product Name: Poly(lactic-co-glycolic)-NH2 5kDa ethylene diamine



- GPC analysis for molecular weight



Analysis Method: Varian Prostar system with 1 ml/min DCM flow across two Resipore 3 um columns and one Mixed E column (Varian) and with UV-Vis (PDA) detection. Calibrated against polystyrene standards

Polymer	Mn (from GPC)	Mw (from GPC)	PDI
PLGA-NH2 (AI17)	5226	12000	2.30