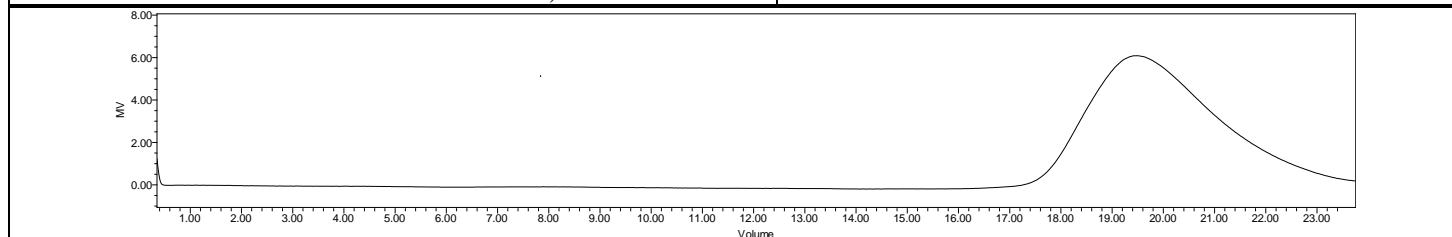
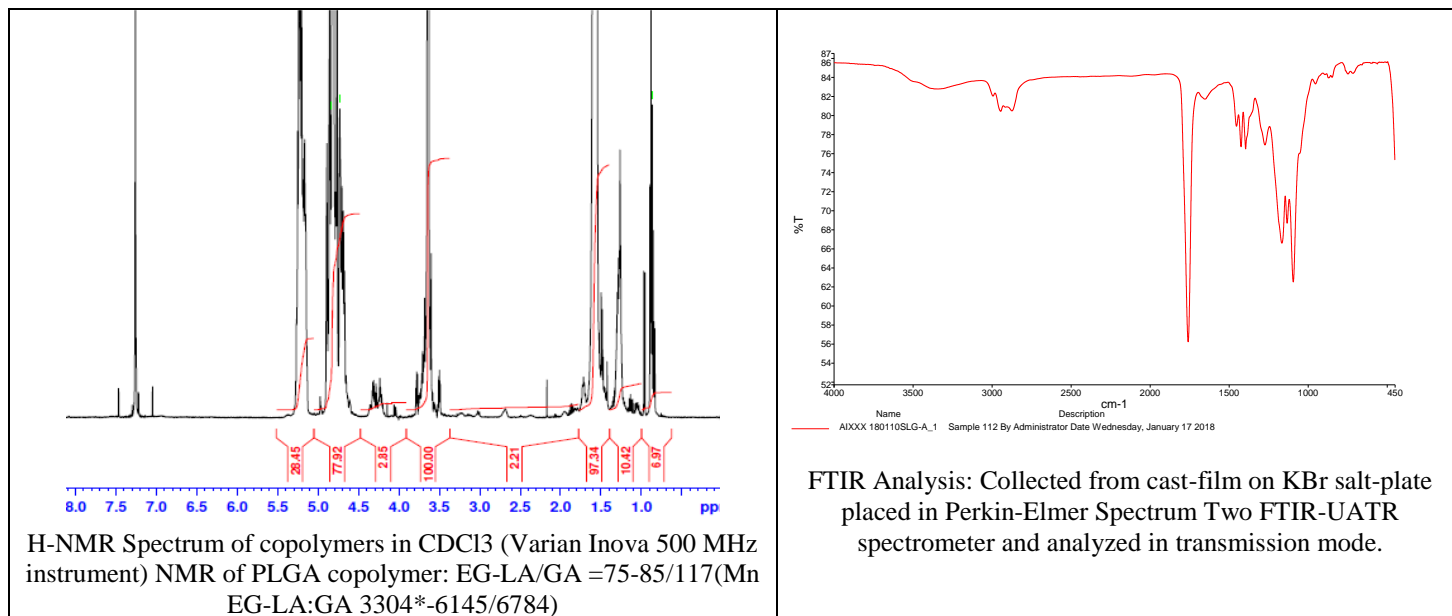


# No. AI163

# Certificate of Analysis



Product Name: Poly(lactide-co-glycolide)-b-Poly(ethylene glycol)-Cysteine Ethyl ester (Thiol) (Mw ~ 17,000-3,000Da Da) (Lot # 180110SLG-A)



GPC Analysis Method: Waters Breeze 2 system with 1 ml/min THF flow across three GPC columns. Detection via refractive index, calibrated against polystyrene standards.

| Polymer  | M <sub>n</sub> (from GPC) | M <sub>w</sub> (from GPC) | PDI  |
|----------|---------------------------|---------------------------|------|
| PLGA-PEG | 18,474                    | 27,020                    | 1.46 |
| PEG*     | 3304*                     |                           |      |

\*- from MFG data

## • Structure of PLGA-PEG-THIOL

