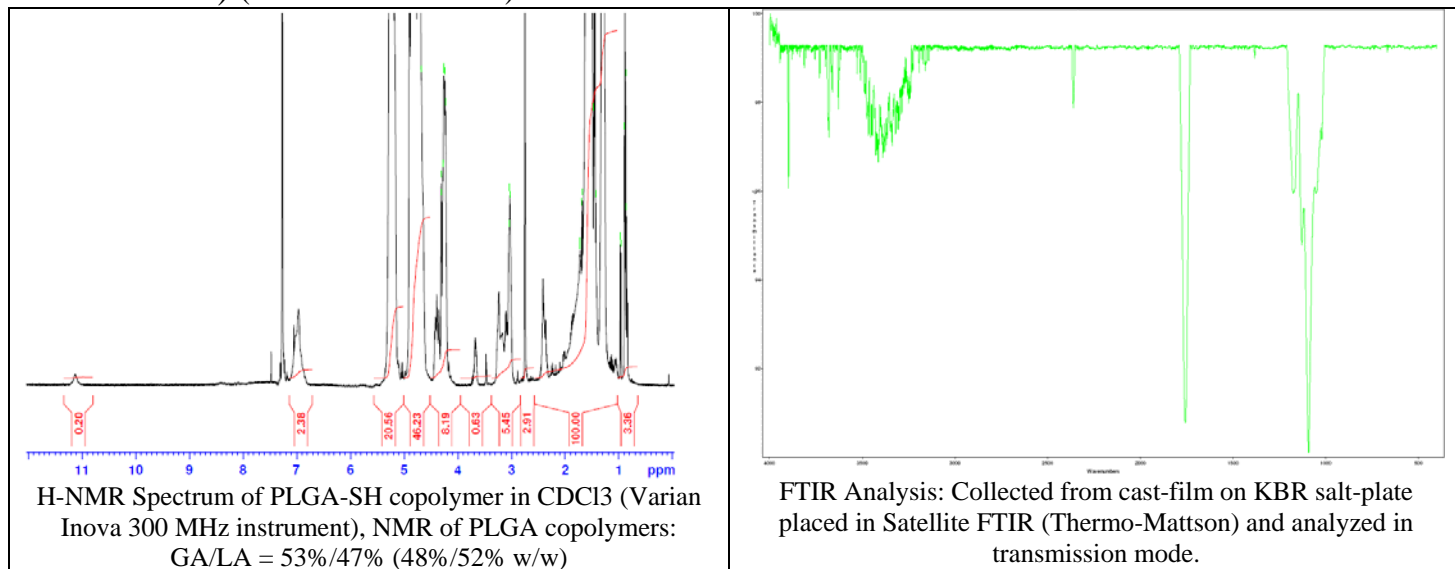


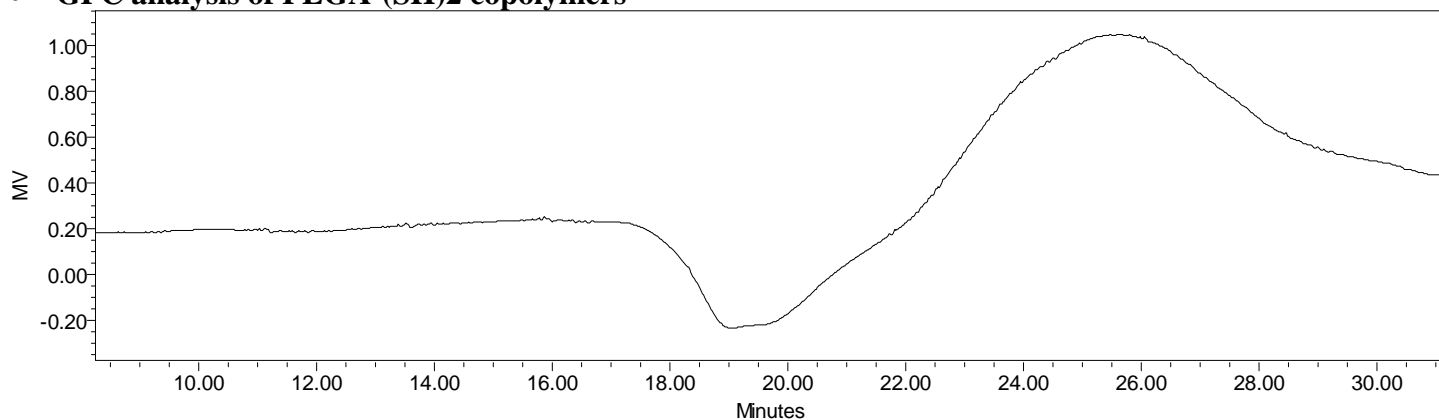
No. AI134

Certificate of Analysis

Product Name: Poly(lactide-co-glycolide)-Dicysteine ethyl ester endcapped (Mn 1000-5000Da, LA:GA 50:50) (Lot#: 60602MJK-A)



• GPC analysis of PLGA-(SH)₂ copolymers



Analysis Method: Waters Breeze system with 1 ml/min DCM flow across three Phenogel 5 μ m columns (Agilent).
Detection via refractory index, calibrated against polystyrene standards (*PEG standards).

Polymer	Mn (from GPC)	Mw (from GPC)	PDI
PLGA-(SH) ₂	3,242	9,392	2.90

• Structure of PLGA-(SH)₂ copolymers

