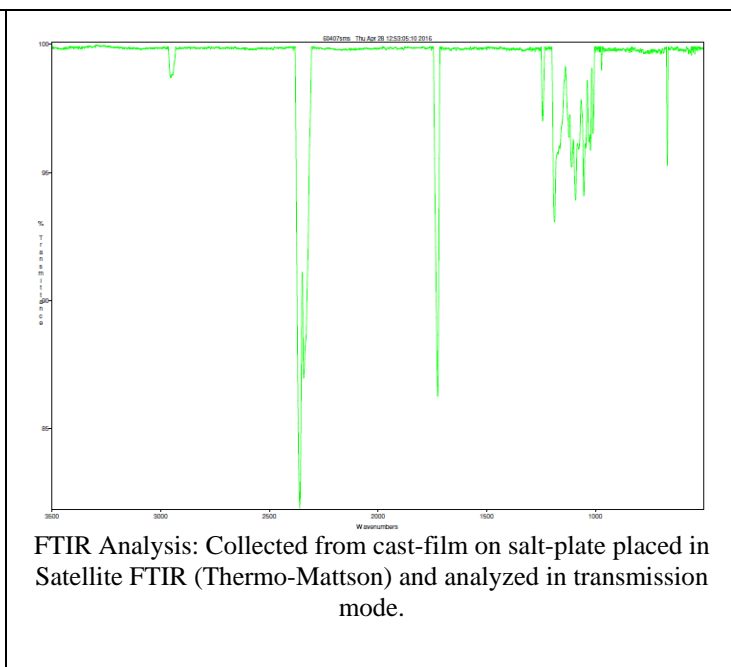
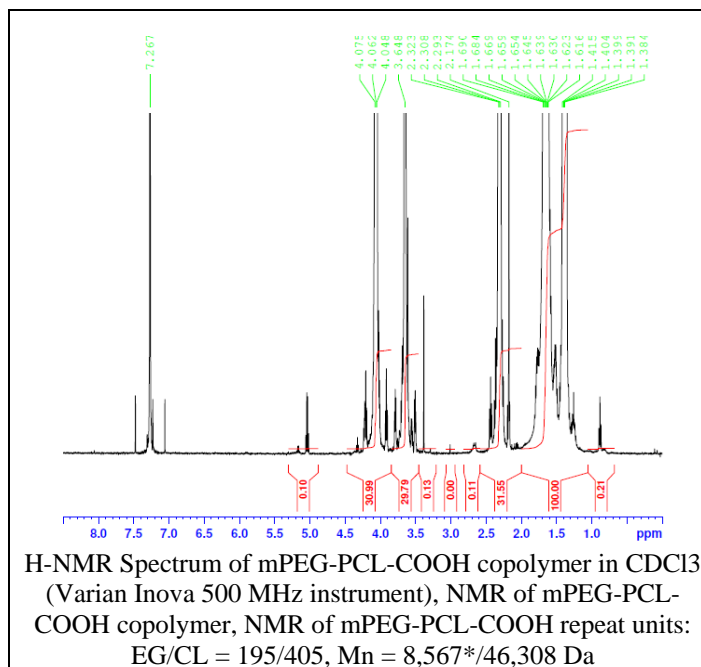


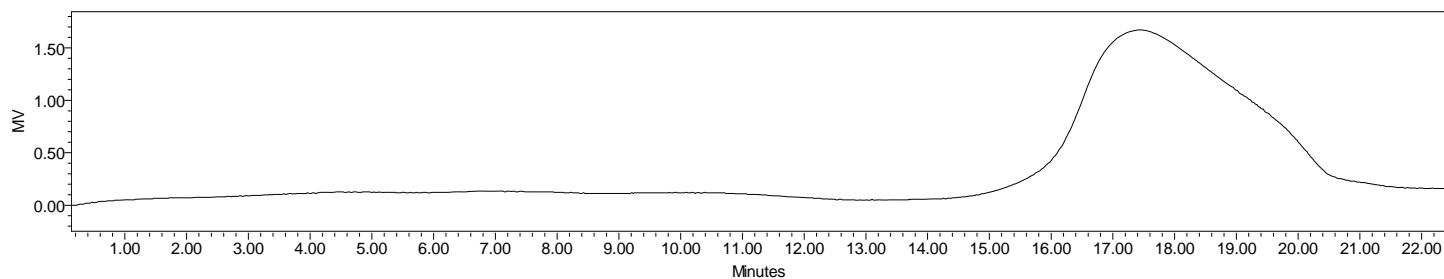
No. AI129

Certificate of Analysis

Product Name: Methoxy Poly(ethylene glycol)-b-Poly(caprolactone) carboxylic acid
(10,000:40,000 Da) (Lot#: 60407SMS-A)



• GPC analysis of mPEG-PCL-COOH copolymer

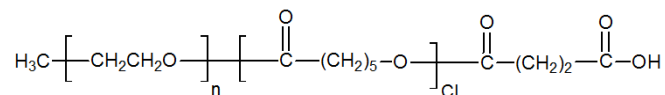


Analysis Method: Waters Breeze 2 system with 1 ml/min DCM flow across three Phenogel 5um columns (Phenomenex).
Detection via refractive index, calibrated against polystyrene standards.

Polymer	Mn (from GPC)	Mw (from GPC)	PDI
mPEG-PCL-COOH	30,001	48,896	1.63
mPEG 10,000 precursor*	Mn-8,567*		1.1

*manufacturer provided data

• Structure of mPEG-PCL-COOH copolymer



Material provided for research use only. Not for human use.