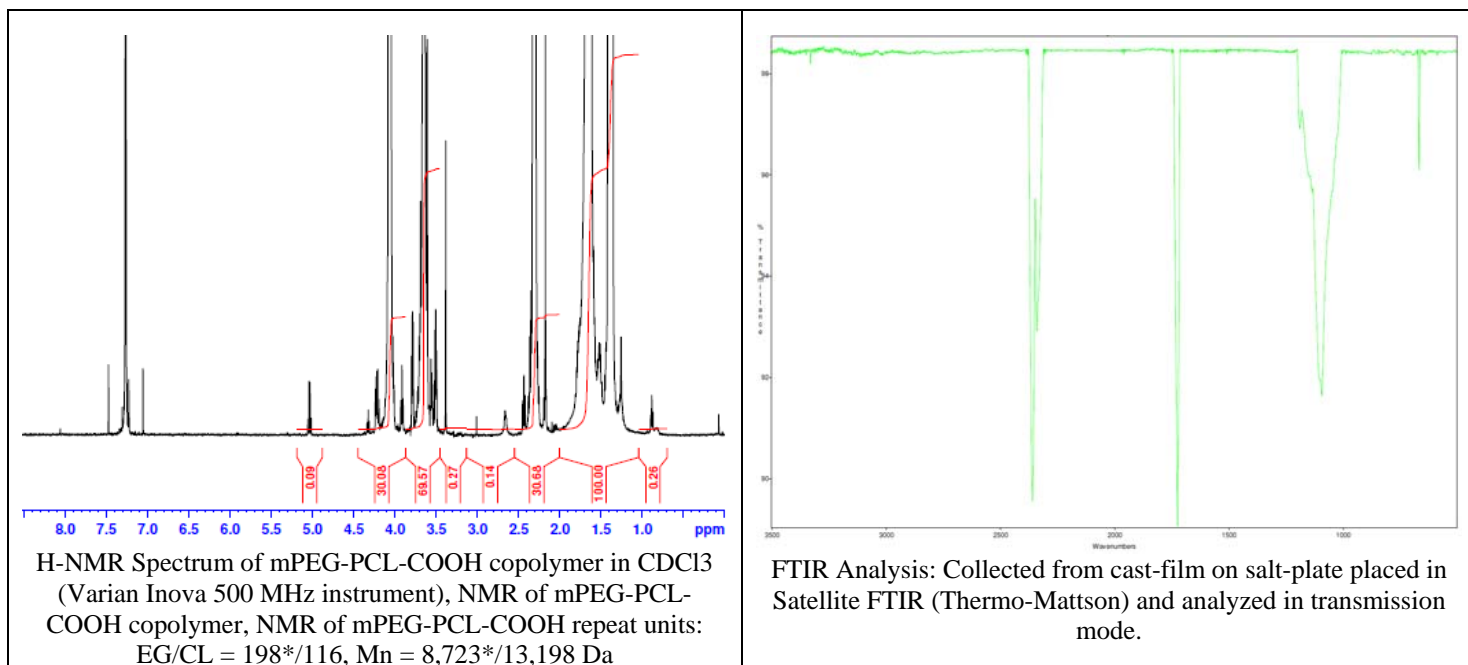


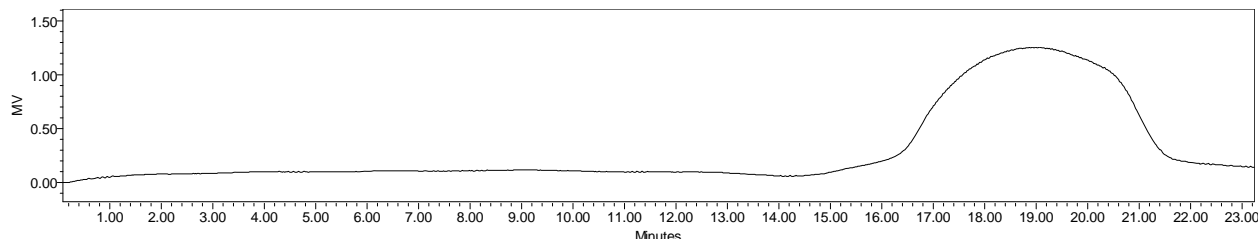
No. AI128

Certificate of Analysis

Product Name: Methoxy-Poly(ethylene glycol)-b-Poly(caprolactone)-carboxylic acid
(10,000:20,000 Da) (Lot#: 60404SMS-A)



- **GPC analysis of mPEG-PCL-COOH copolymer**

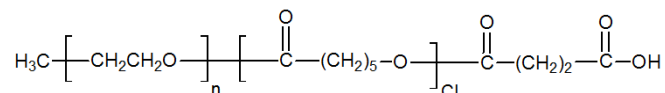


Analysis Method: Waters Breeze 2 system with 1 ml/min DCM flow across three Phenogel 5um columns (Phenomenex). Detection via refractive index, calibrated against polystyrene standards.

Polymer	Mn (from GPC)	Mw (from GPC)	PDI
mPEG-PCL-COOH	16,799	31,131	1.85
mPEG 10,000 precursor*	Mn-8,719*		1.10

*manufacturer provided data

- **Structure of mPEG-PCL-COOH copolymer**



Material provided for research use only. Not for human use.