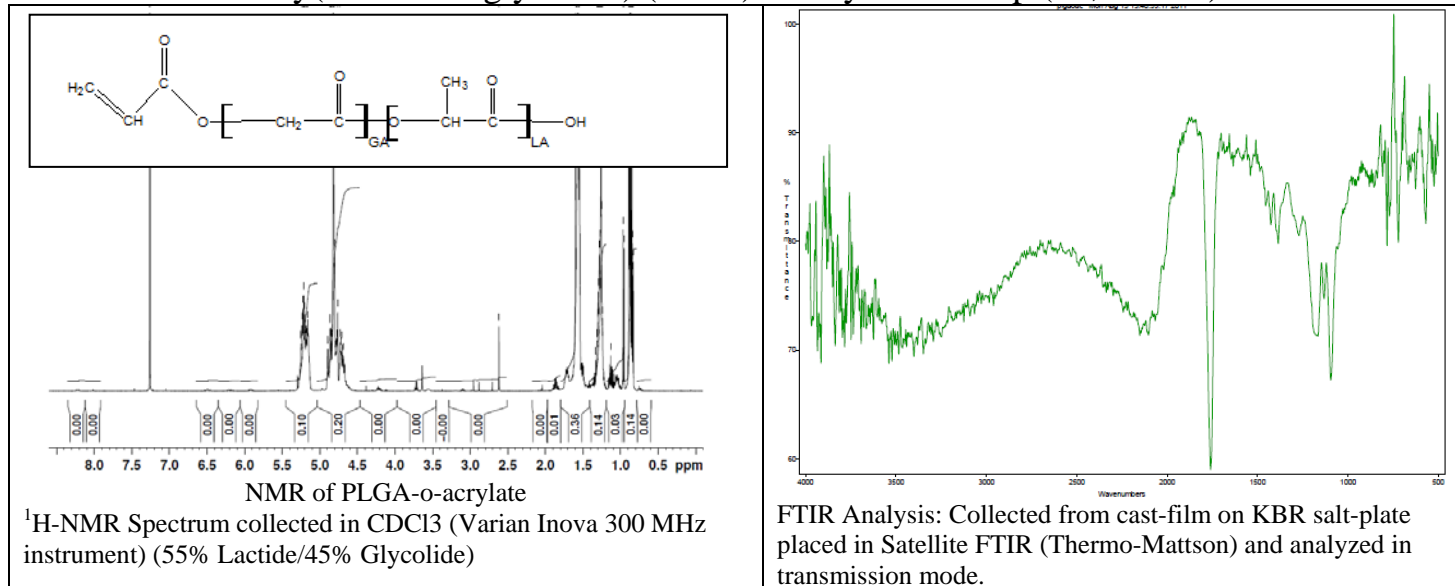


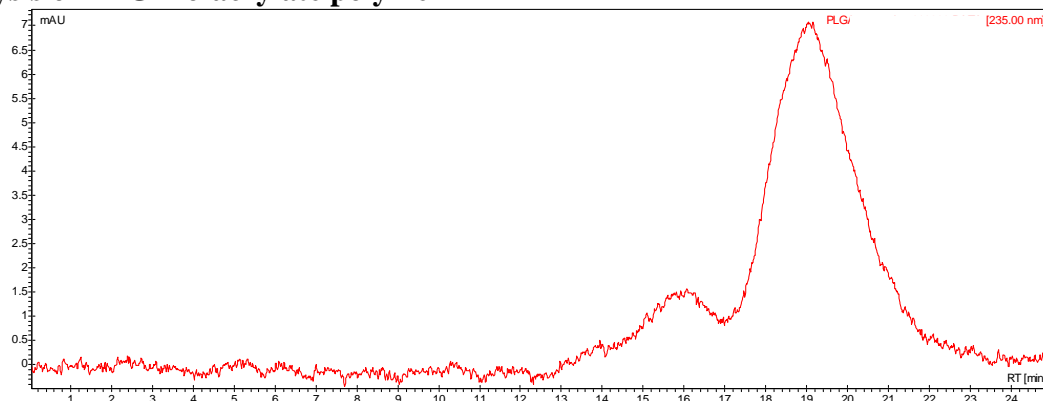
# No. AI12

# Certificate of Analysis

Product Name: Poly(lactide-co-glycolide) (50:50)-o-acrylate endcap (25,000 Da)



- GPC analysis of PLGA-o-acrylate polymer**



Analysis Method: Varian Prostar system with 1 ml/min DCM flow across two Resipore 3 um columns and one Mixed E column (Varian) and with UV-Vis (PDA) detection. Calibrated against polystyrene standards

Polymer	Mn (from GPC)	Mw (from GPC)	PDI
PLGA(50:50)-acrylate	20,952	34,198	1.69