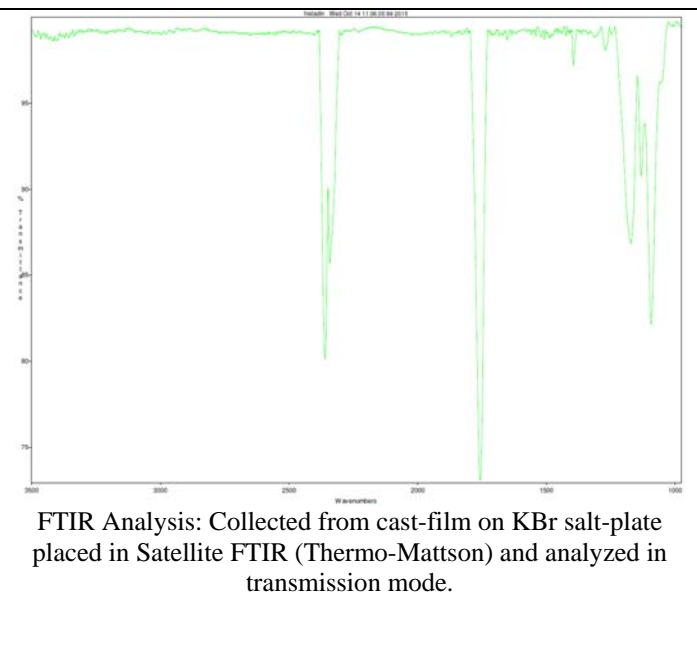
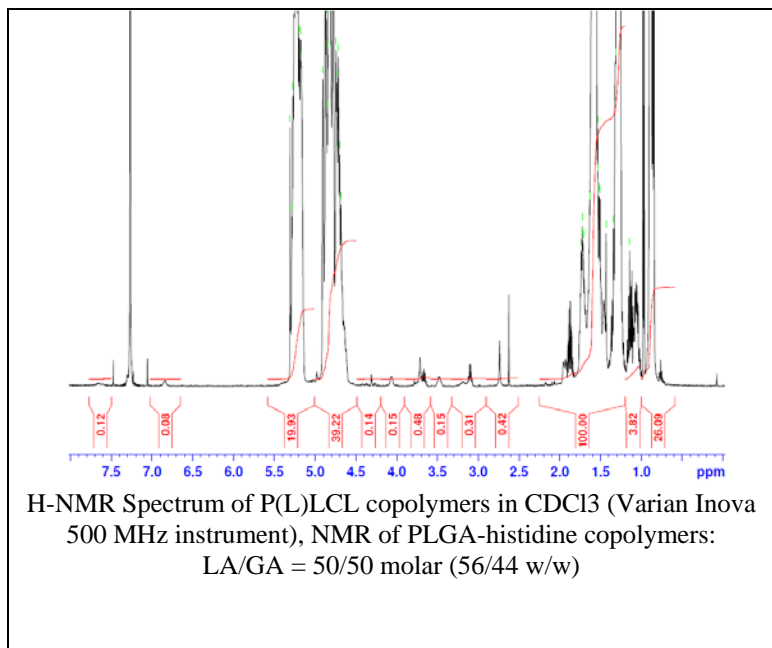


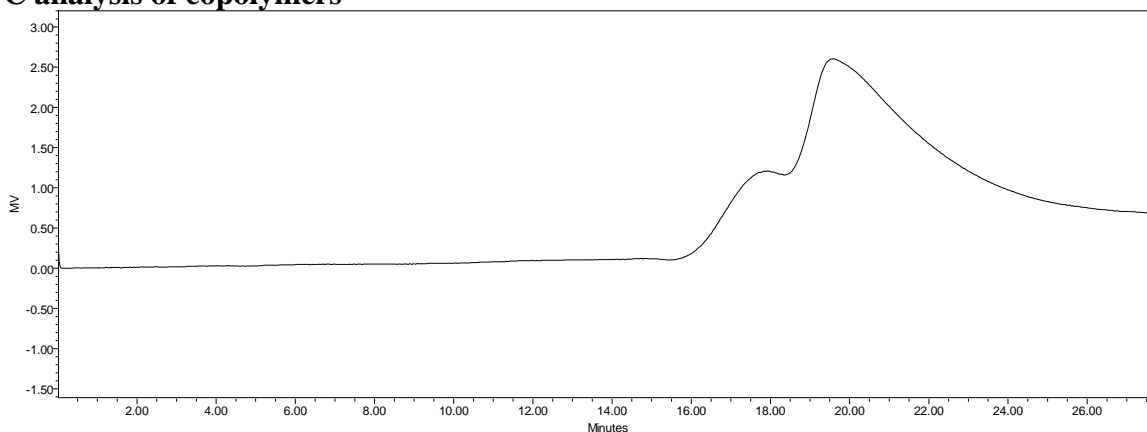
No. AI117

Certificate of Analysis

Product Name: Poly(lactide-co-glycolide)-histidine methyl ester endcap (Mn 10,000-30,000 LA:GA 50:50) (Lot#: 51007JSG)



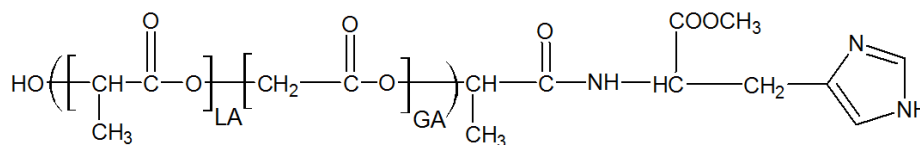
• GPC analysis of copolymers



Analysis Method: Waters Breeze 2 system with 1 ml/min DCM flow across three Phenogel 5um columns (Phenomenex). Detection via refractive index, calibrated against polystyrene standards.

| Polymer | M _n (from GPC) | M _w (from GPC) | PDI |
|----------------|---------------------------|---------------------------|------|
| PLGA-histidine | 20253 | 41783 | 2.06 |

• Structure of PLGA-histidine copolymers



Material provided for research use only. Not for human use.