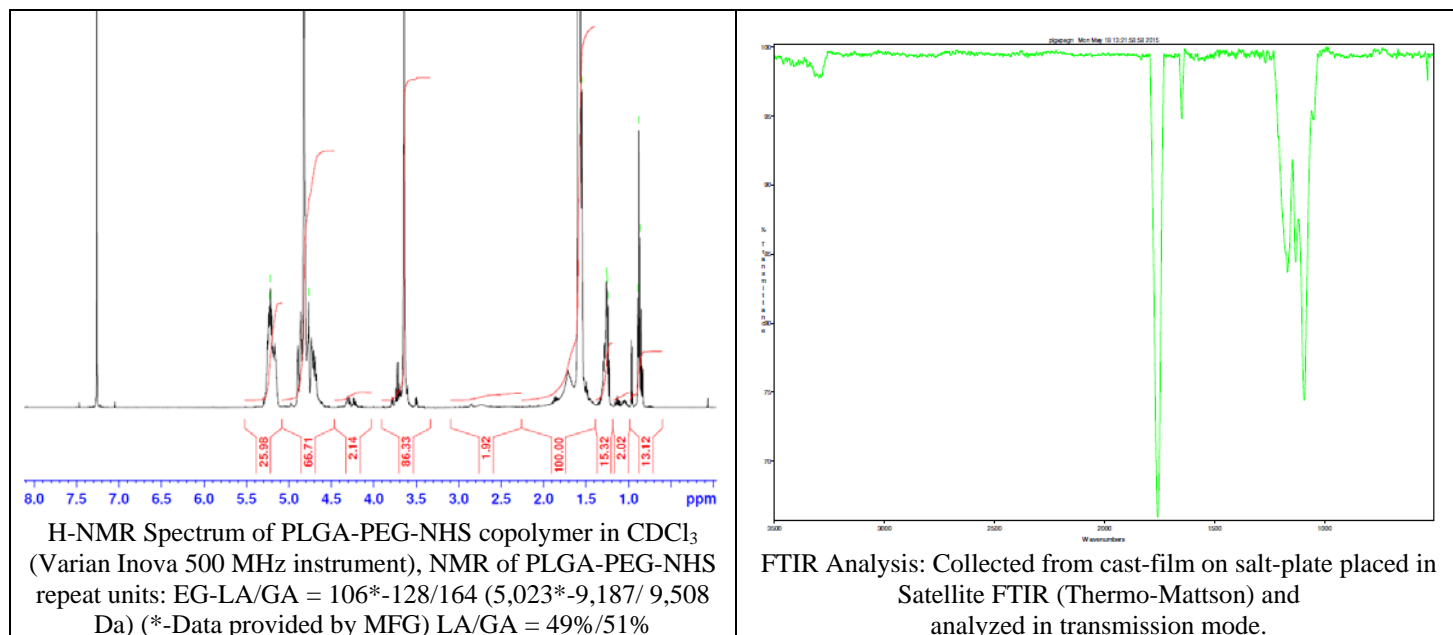
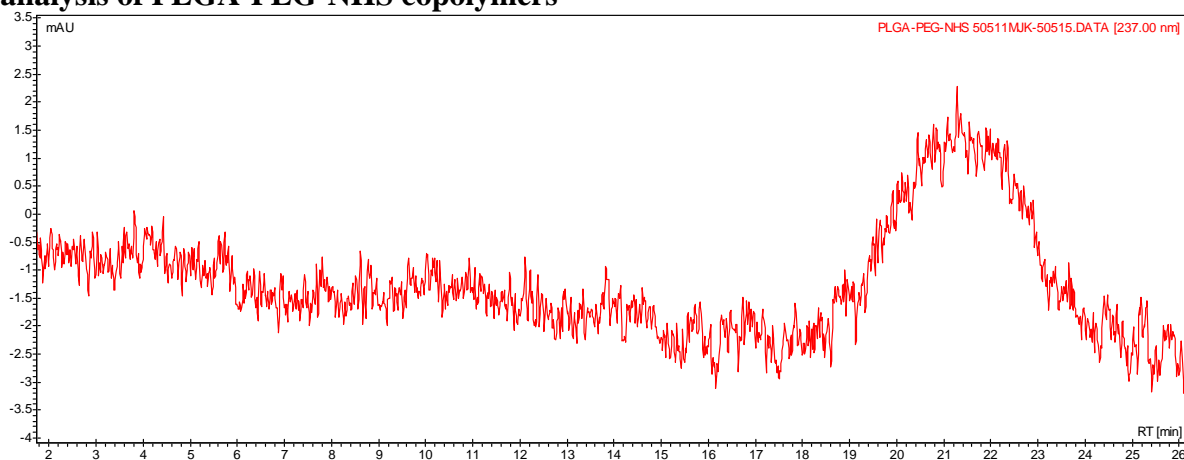


No. AI111 Certificate of Analysis

Product Name: Poly(lactide-co-glycolide)-b-Poly(ethylene glycol)-N-hydroxysuccinimide endcap (~20,000 Da-5,000 Da, 50:50 LA:GA) (Lot#: 50511MJK)



• GPC analysis of PLGA-PEG-NHS copolymers

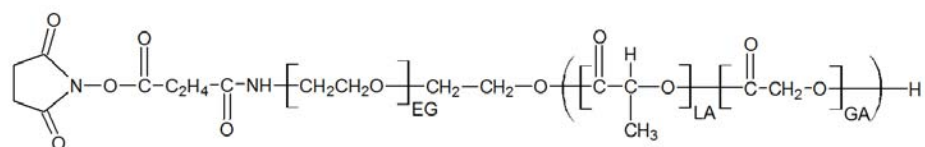


Analysis Method: Varian Prostar system with 1 ml/min DCM flow across two Phenogel 5 μm columns and one PLgel Resipore column (Agilent). Detection via UV/Vis, calibrated against polystyrene standards.

Polymer	M _n (from GPC)	M _w (from GPC)	PDI
PLGA-PEG-NHS	10,075	23,485	2.33
HO-PEG-COOH*	Average M _n by GFC-5000 Da *		

* - data provided by MFG

• Structure of PLGA-PEG-NHS copolymers



Material provided for research use only. Not for human use.