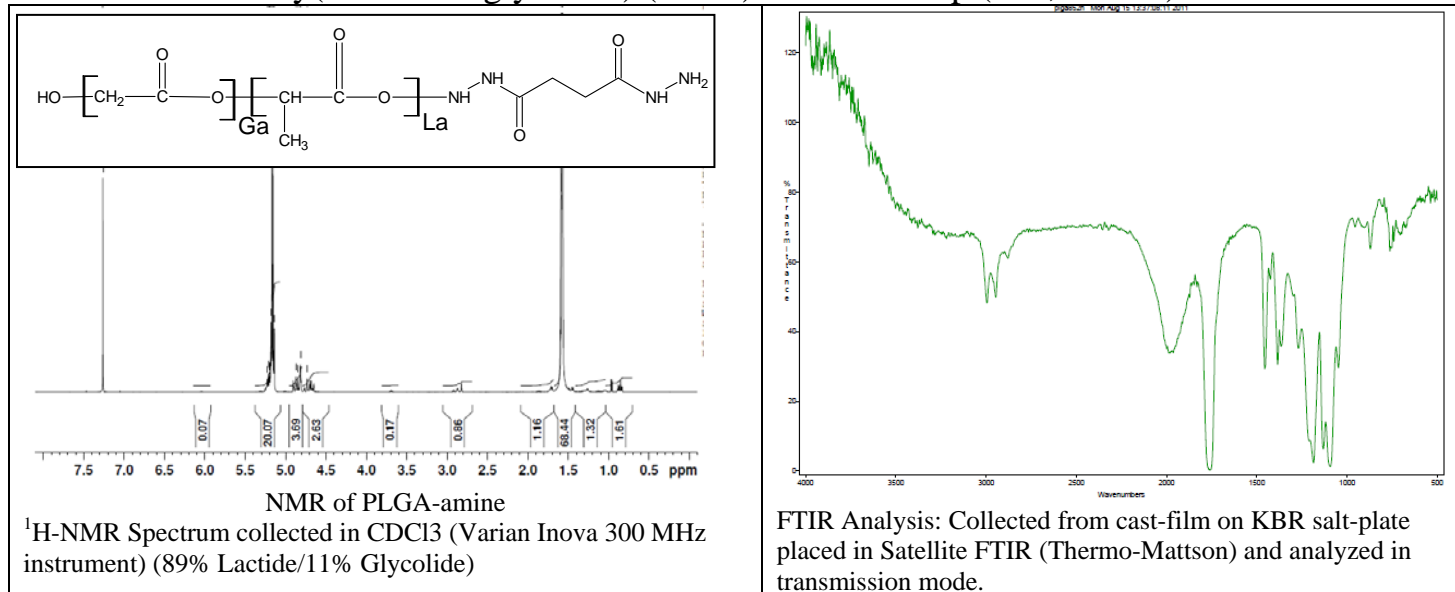


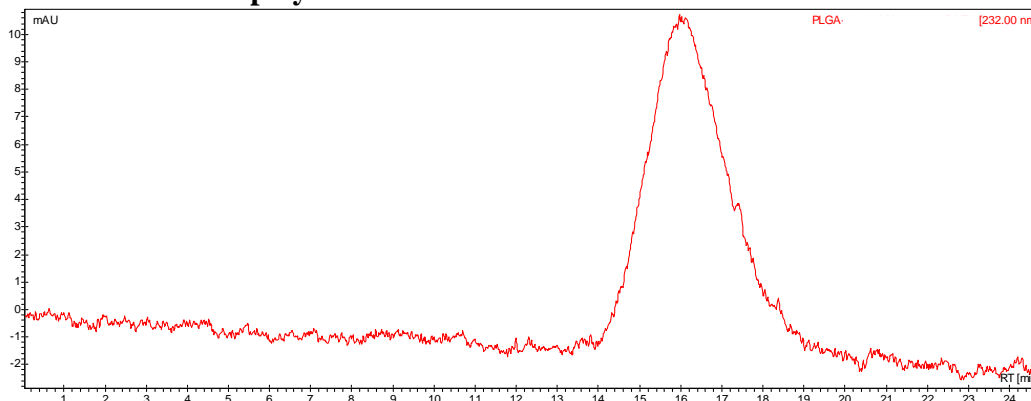
# No. AI11

# Certificate of Analysis

Product Name: Poly(lactide-co-glycolide) (85:15) amine endcap (200,000 Da)



- GPC analysis of PLGA-NH<sub>2</sub> polymer**



Analysis Method: Varian Prostar system with 1 ml/min DCM flow across two Resipore 3 um columns and one Mixed E column (Varian) and with UV-Vis (PDA) detection. Calibrated against polystyrene standards

Polymer	Mn (from GPC)	Mw (from GPC)	PDI
PLGA(85:15)-NH <sub>2</sub>	202035	272845	1.35