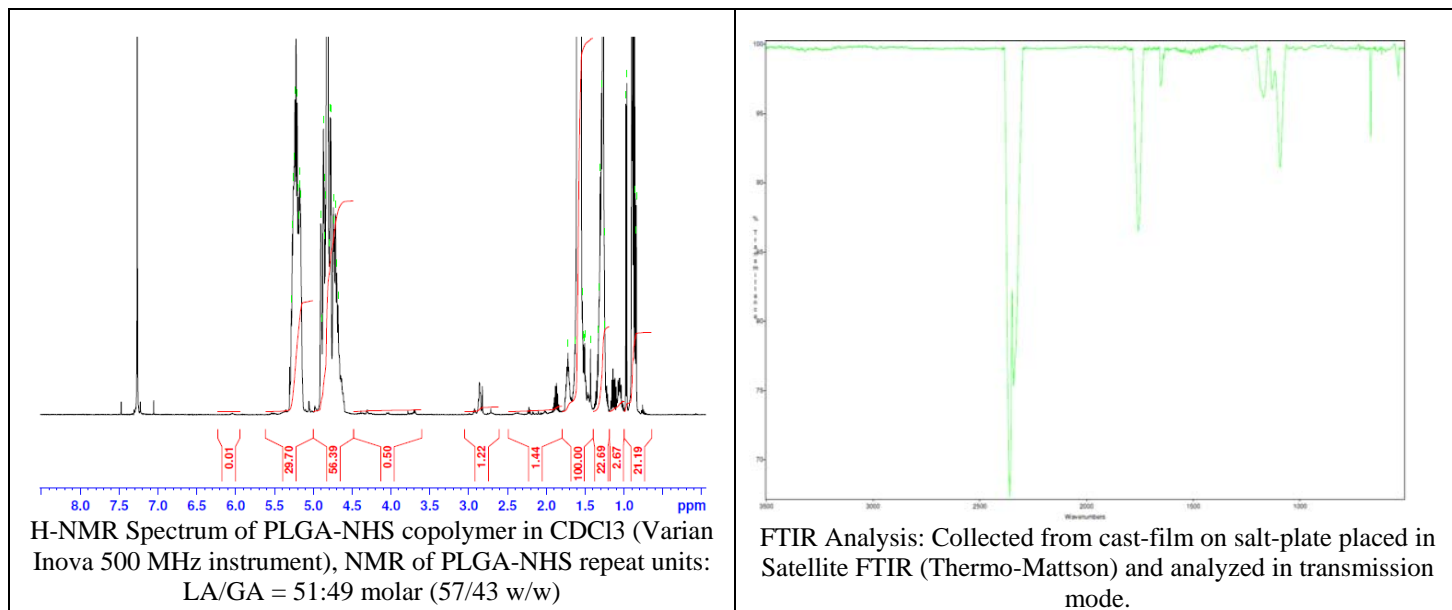
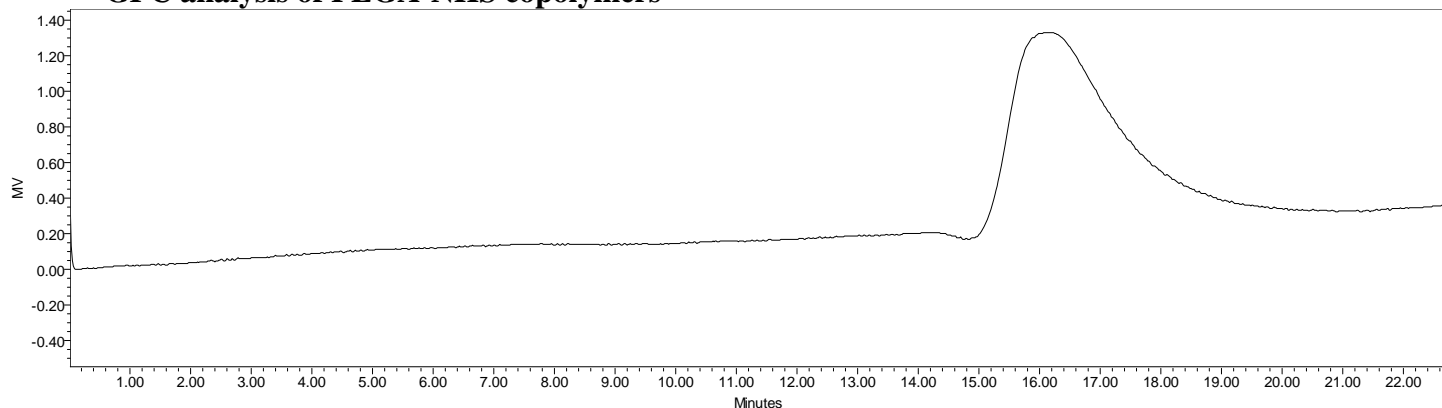


# No. AI097 Certificate of Analysis

Product Name: Poly(lactide-co-glycolide)-N-hydroxysuccinimide endcap (Mn 20,000-45,000 Da, 50:50 LA:GA) (Lot#: 60211FAJ-A)



- **GPC analysis of PLGA-NHS copolymers**



Analysis Method: Varian Prostar system with 1 ml/min DCM flow across two Phenogel 5µm columns and one PLgel Resipore column (Agilent). Detection via UV/Vis, calibrated against polystyrene standards.

| Polymer  | Mn (from GPC) | Mw (from GPC) | PDI  |
|----------|---------------|---------------|------|
| PLGA-NHS | 32,835        | 75,806        | 2.31 |

- **Structure of PLGA-NHS copolymers**

