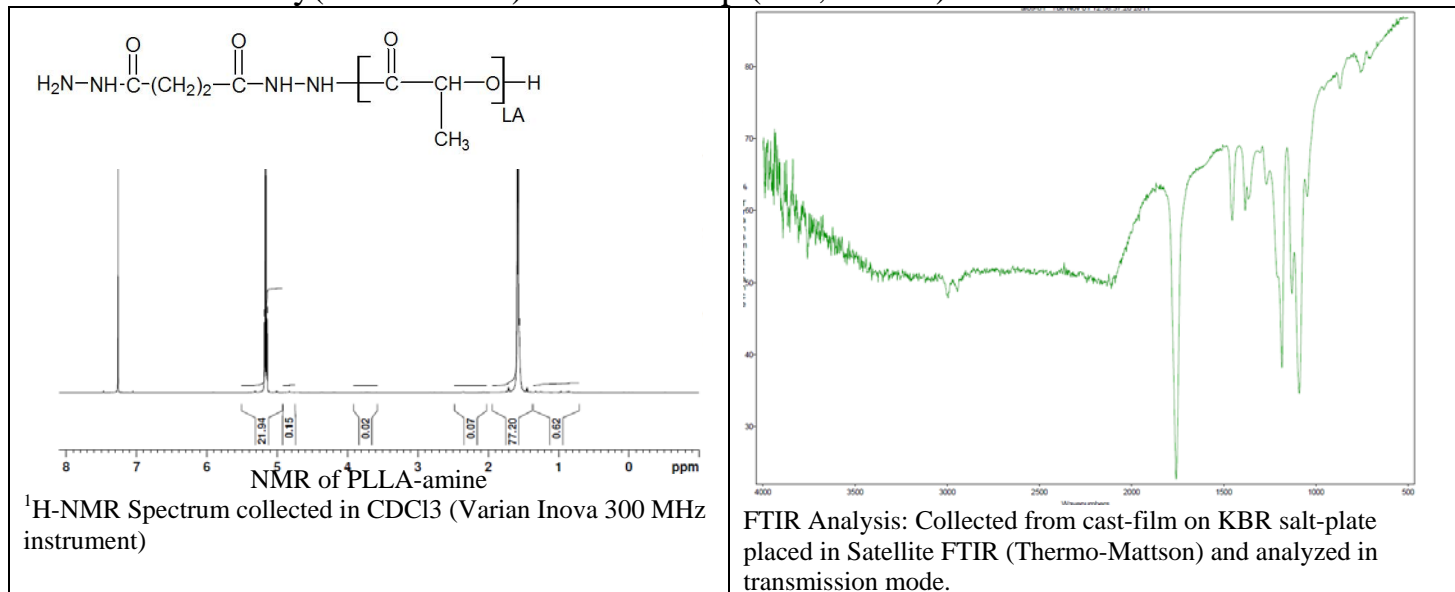
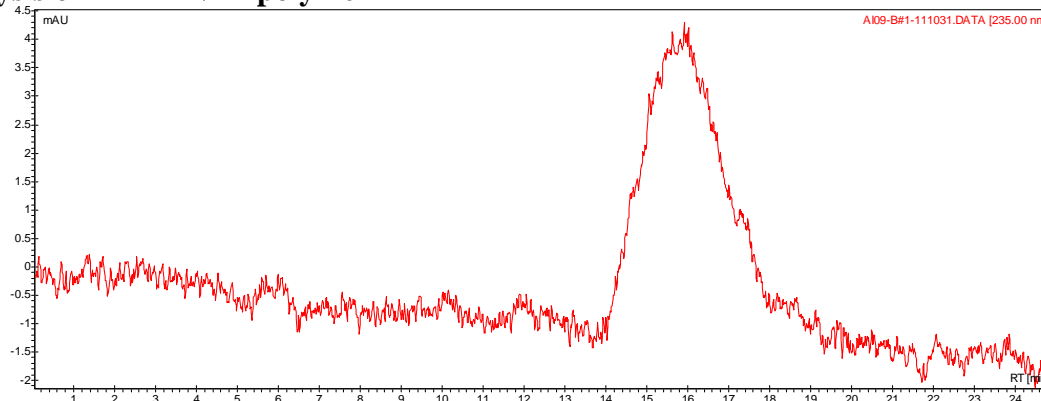


No. AI09-B#1 Certificate of Analysis

Product Name: Poly(L-lactic acid) amine endcap (240,000 Da) REV:A



- GPC analysis of PLLA-NH₂ polymer**



Analysis Method: Varian Prostar system with 1 ml/min DCM flow across two Resipore 3 um columns and one Mixed E column (Varian) and with UV-Vis (PDA) detection. Calibrated against polystyrene standards

Polymer	Mn (from GPC)	Mw (from GPC)	PDI
PLLA-NH ₂	243693	322912	1.33