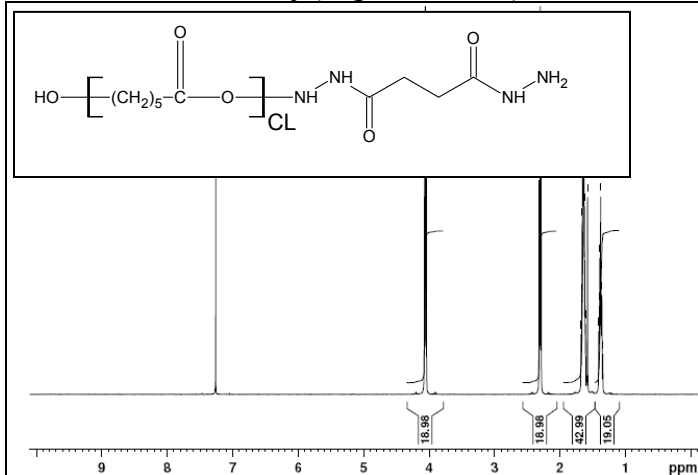


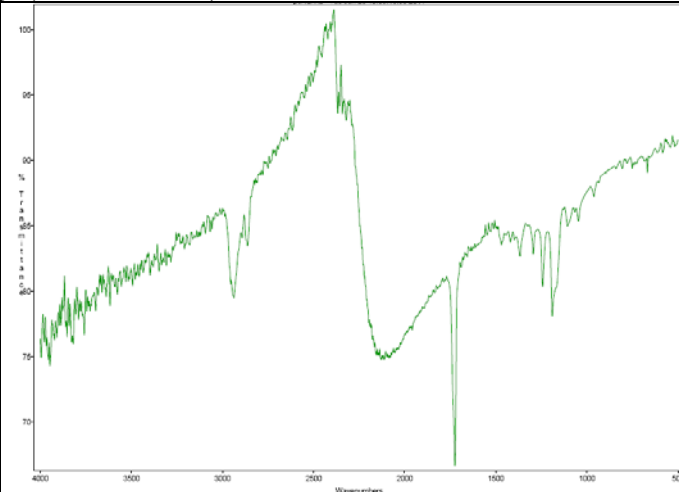
No. AI06

Certificate of Analysis

Product Name: Poly(caprolactone) amine endcap (150,000 Da)

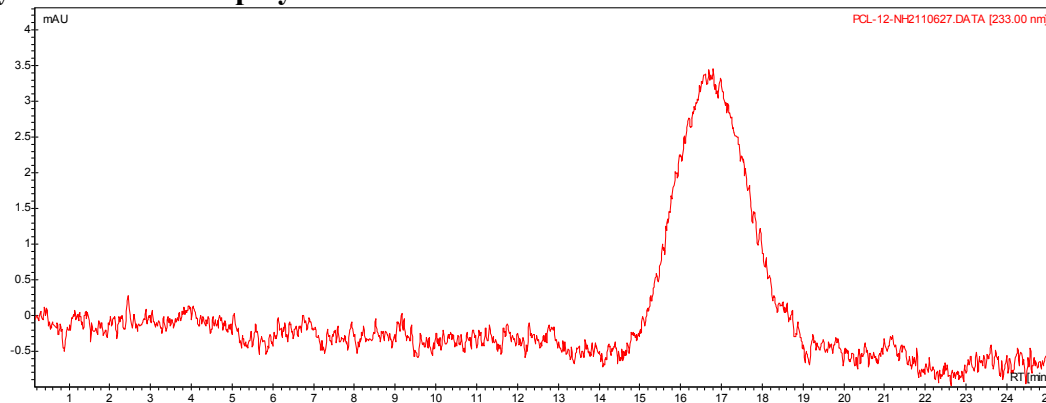


NMR of PCL-amine
¹H-NMR Spectrum collected in CDCl₃ (Varian Inova 300 MHz instrument)



FTIR Analysis: Collected from cast-film on KBR salt-plate placed in Sattelite FTIR (Thermo-Mattson) and analyzed in transmission mode.

- GPC analysis of PCL-NH₂ polymer



Analysis Method: Varian Prostar system with 1 ml/min DCM flow across two Resipore 3 um columns and one Mixed E column (Varian) and with UV-Vis (PDA) detection. Calibrated against polystyrene standards

Polymer	Mn (from GPC)	Mw (from GPC)	PDI
PCL-NH ₂	136821	171888	1.26