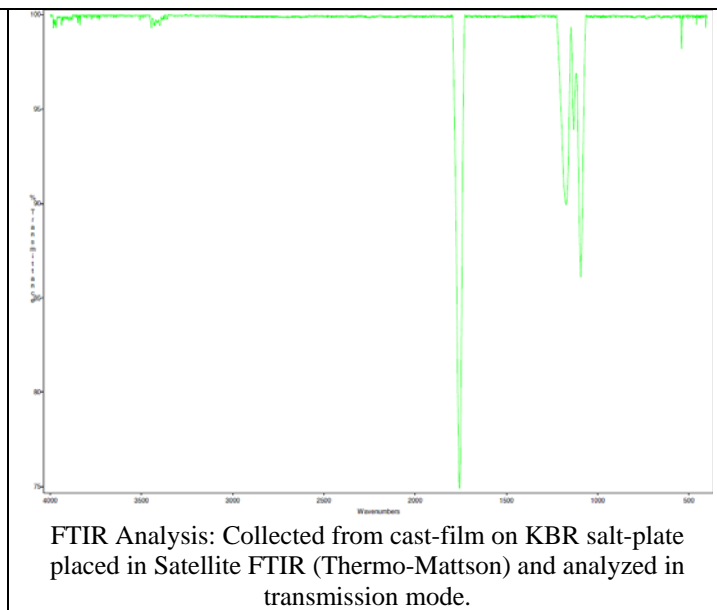
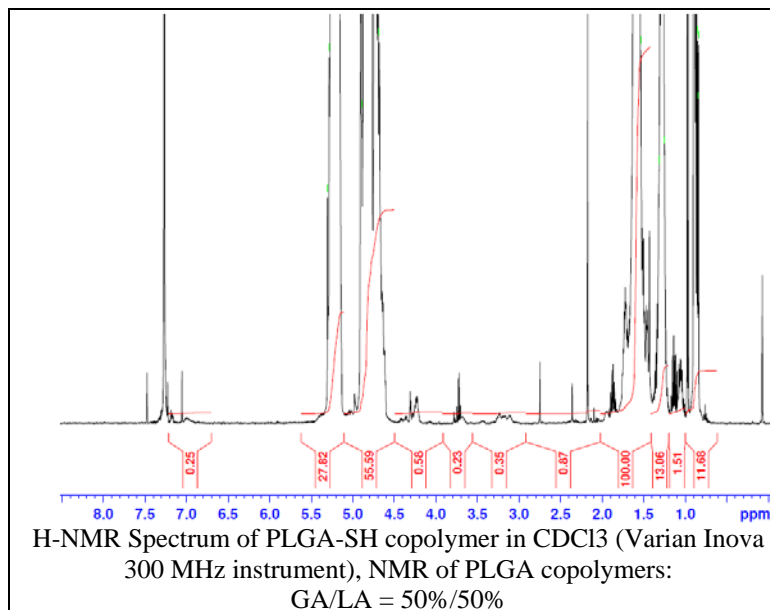


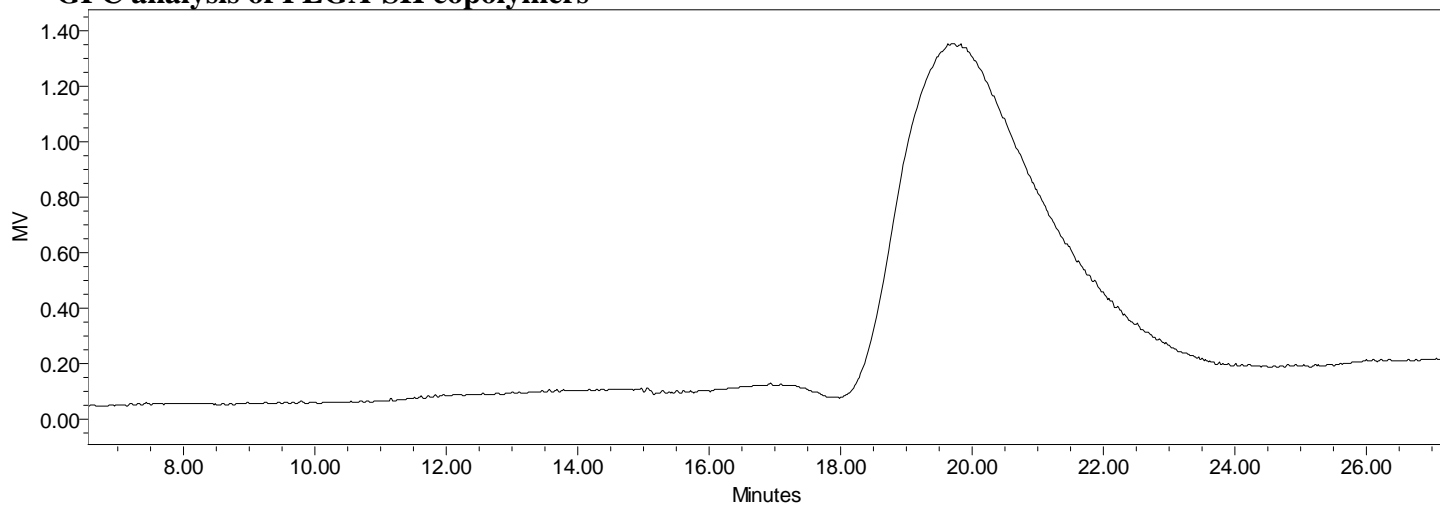
No. AI025

Certificate of Analysis

Product Name: Poly(lactide-co-glycolide)-Cysteine Ethyl Ester (Mn: 10,000-30,000 Da) (Thiol endcap) (Lot#: 60525DWW-A)



• GPC analysis of PLGA-SH copolymers



Analysis Method: Waters Breeze system with 1 ml/min DCM flow across three Phenogel 5 μ m columns (Agilent).
Detection via refractory index, calibrated against polystyrene standards (*PEG standards).

Polymer	Mn (from GPC)	Mw (from GPC)	PDI
AI25 (PLGA-SH)	23,372	26,886	1.15

• Structure of AI025 (PLGA-SH) copolymers

