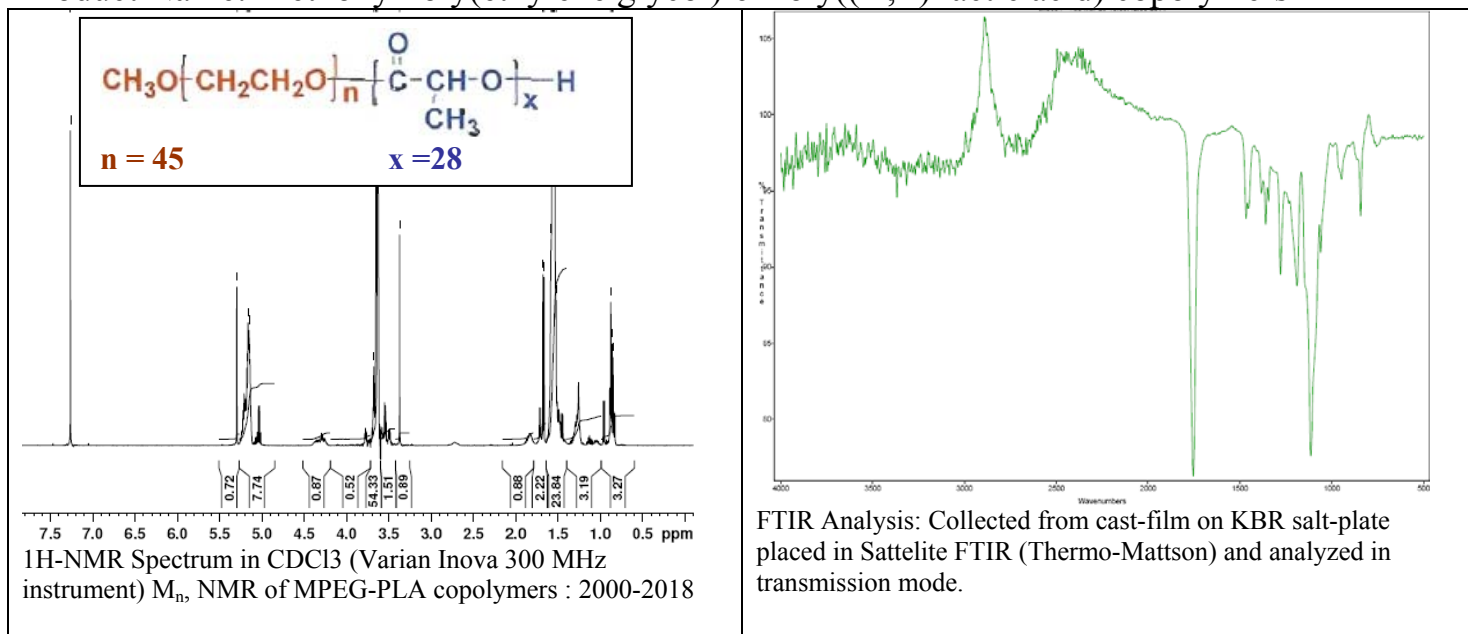
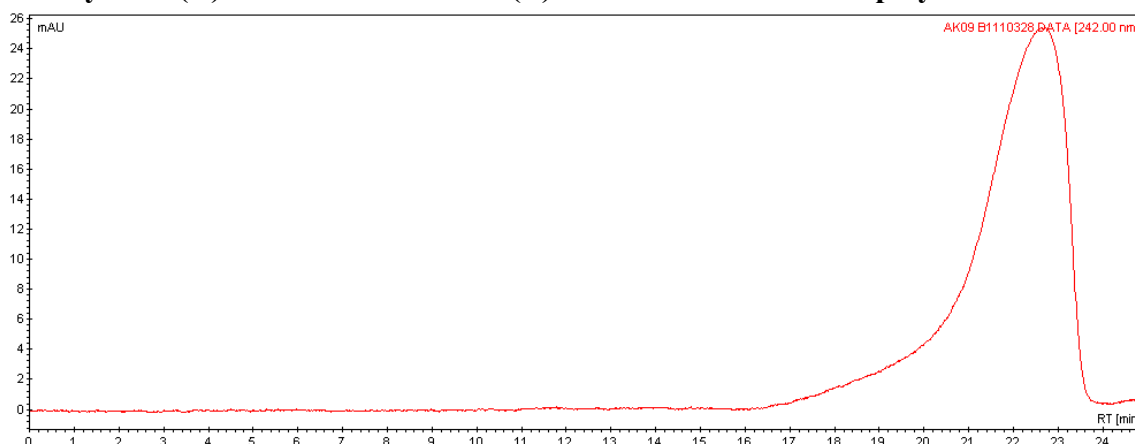


# No. 9 Batch #1 Certificate of Analysis

Product Name: Methoxy Poly(ethylene glycol)-*b*-Poly((D,L) lactic acid) copolymers



- GPC analysis of (A) mPEG initiator and (B) mPEG-PLA diblock copolymers**



Analysis Method: Varian Prostar system with 1 ml/min DCM flow across two Resipore 3 um columns and one mixed E column (Varian) and with UV-Vis (PDA) detection. Calibrated against polystyrene standards

Polymer	Mn (from GPC)	Mw (from GPC)	PDI
MPEG(2000) Initiator*	1927	2084	1.08
AK09	5135	7218	1.40

\*Analysis Method: Agilent 1100 system with 1 ml/min THF flow across three PLgel 5 um MIXED-D and -E columns (Agilent) and RI detector(data not shown).