

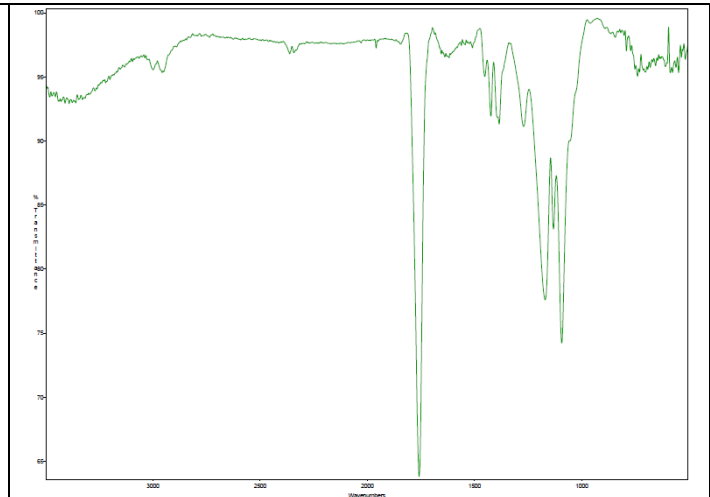
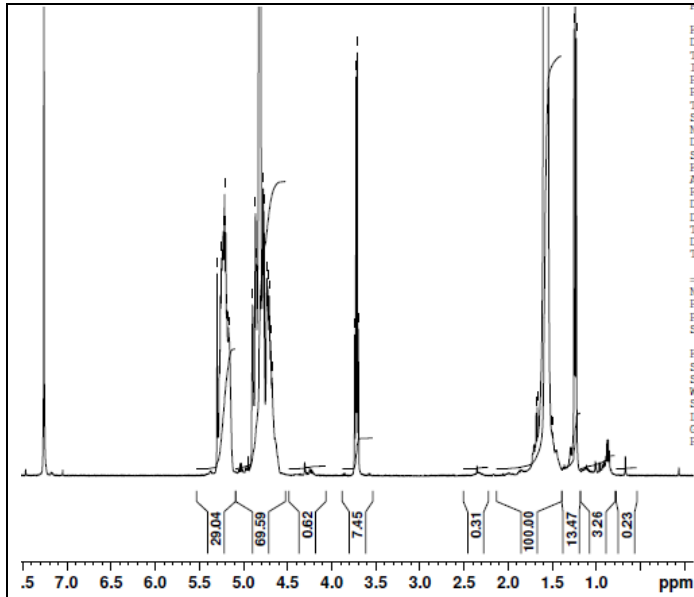
No.AP97

Certificate of Analysis

Product Name: Poly(lactide-co-glycolide)-Cholesterol endcap (Mn: 35,000-45,000 Da)
(Lot #31004SMS)

H-NMR

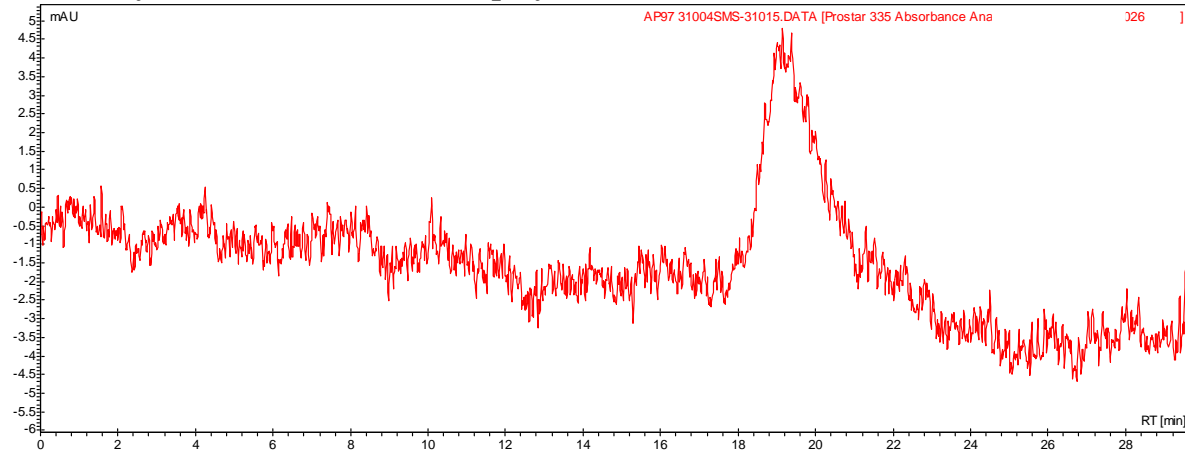
FTIR



FTIR Analysis: Collected from cast-film on KBR salt-plate placed in Satellite FTIR (Thermo-Mattson) and analyzed in transmission mode.

NMR of PLGA-Cholesterol
¹H-NMR Spectrum collected in CDCl₃ (Varian Inova 300 MHz instrument) (51% Lactide/49% Glycolide)

- **GPC analysis of PLGA-Cholesterol polymer**



Analysis Method: Varian Prostar system with 1 ml/min DCM flow across two Resipore 3 um columns and one Mixed E column (Varian) and with UV-Vis (PDA) detection. Calibrated against polystyrene standards

Polymer	Mn (from GPC)	Mw (from GPC)	PDI
PLGA-Cholesterol	37937	69876	1.84

- **Chemical Structure**

