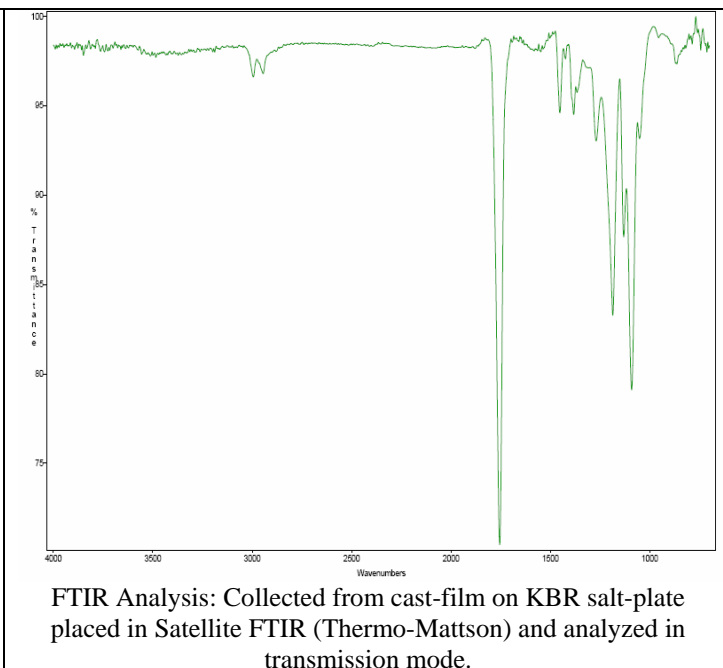
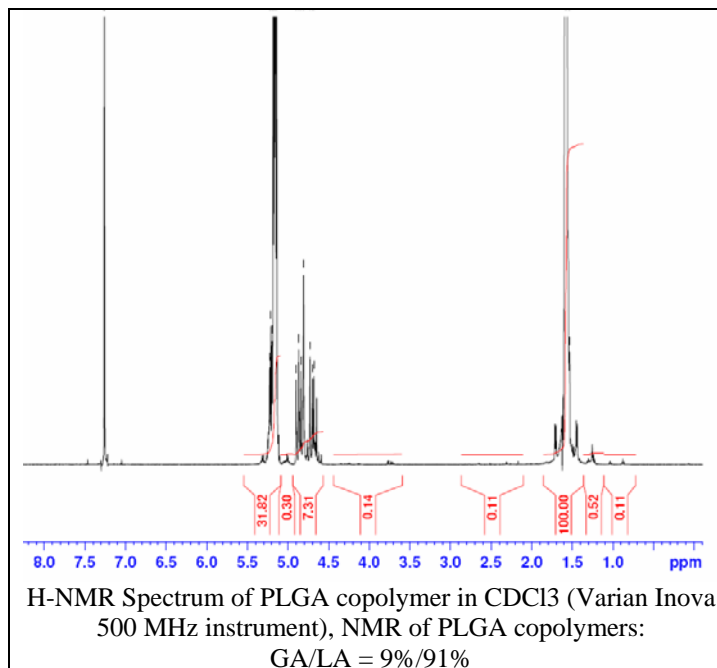


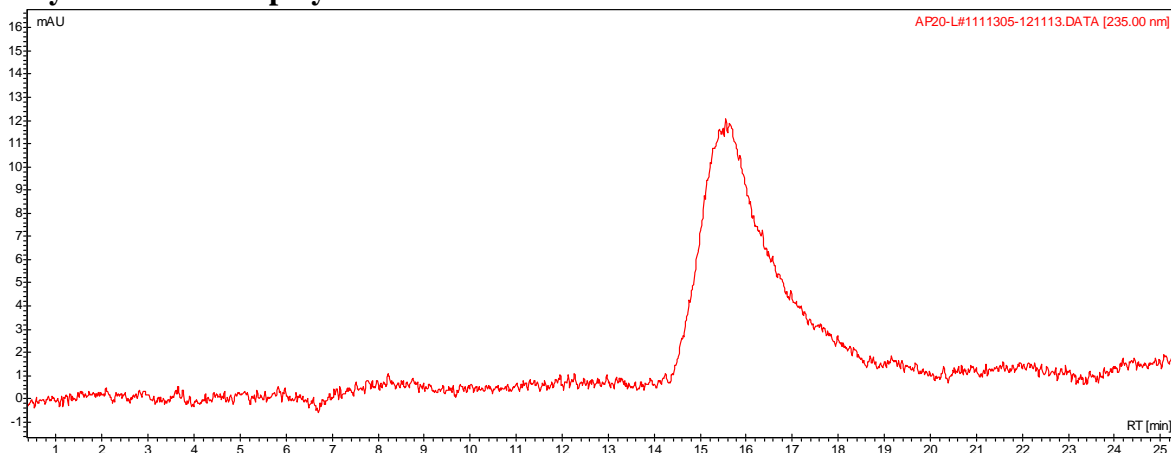
No. AP49

Certificate of Analysis

Product Name: Poly(lactic-co-glycolic) acid endcapped (~90:10 LA:GA, MW~ 185,000Da)
(Lot#: 1111305)



• GPC analysis of PLGA copolymers



Analysis Method: Varian Prostar system with 1 ml/min DCM flow across one PLGel Mixed-D column and one PLGel Mixed-E column and one phenogel 5u column (Agilent). Detection via UV/Vis, calibrated against polystyrene standards.

Polymer	Mn (from GPC)	Mw (from GPC)	PDI
PLGA	142865	227186	1.59

• Structure of PLGA copolymers

