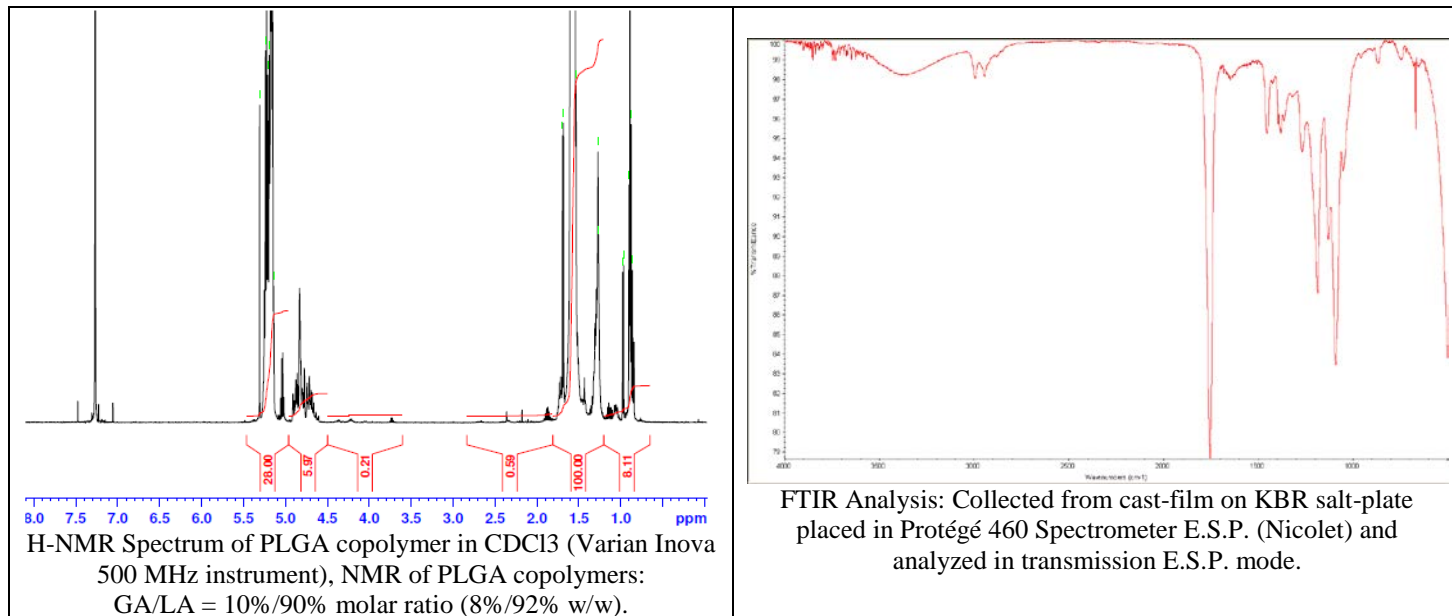


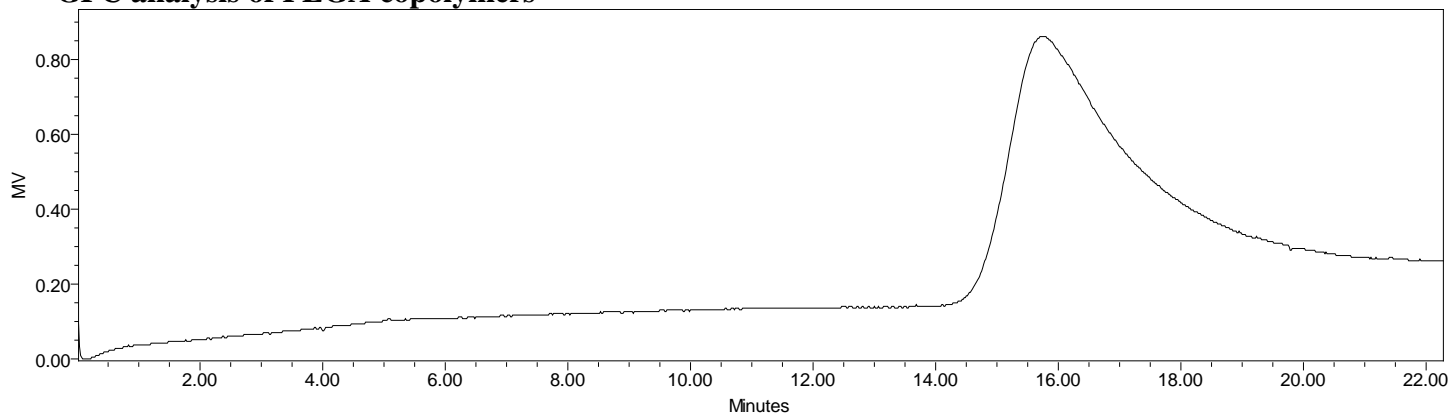
No. AP200

Certificate of Analysis

Product Name: Poly(lactide-co-glycolide) acid end-capped (90:10 LA:GA, Mn 65,000-75,000)
(Lot#: 61121STR-A)



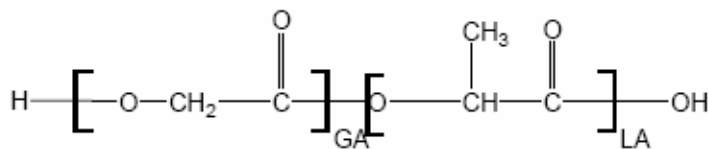
- GPC analysis of PLGA copolymers



Analysis Method: Waters Breeze 2 system with 1 ml/min DCM flow across three GPC columns (7.8 x 300 mm, mixed porosities).
Detection via refractive index, calibrated against polystyrene standards.

Polymer	Mn (from GPC)	Mw (from GPC)	PDI
PLGA	69,462	95,287	1.37

- Structure of PLGA copolymers



Material provided for research use only. Not for human use.