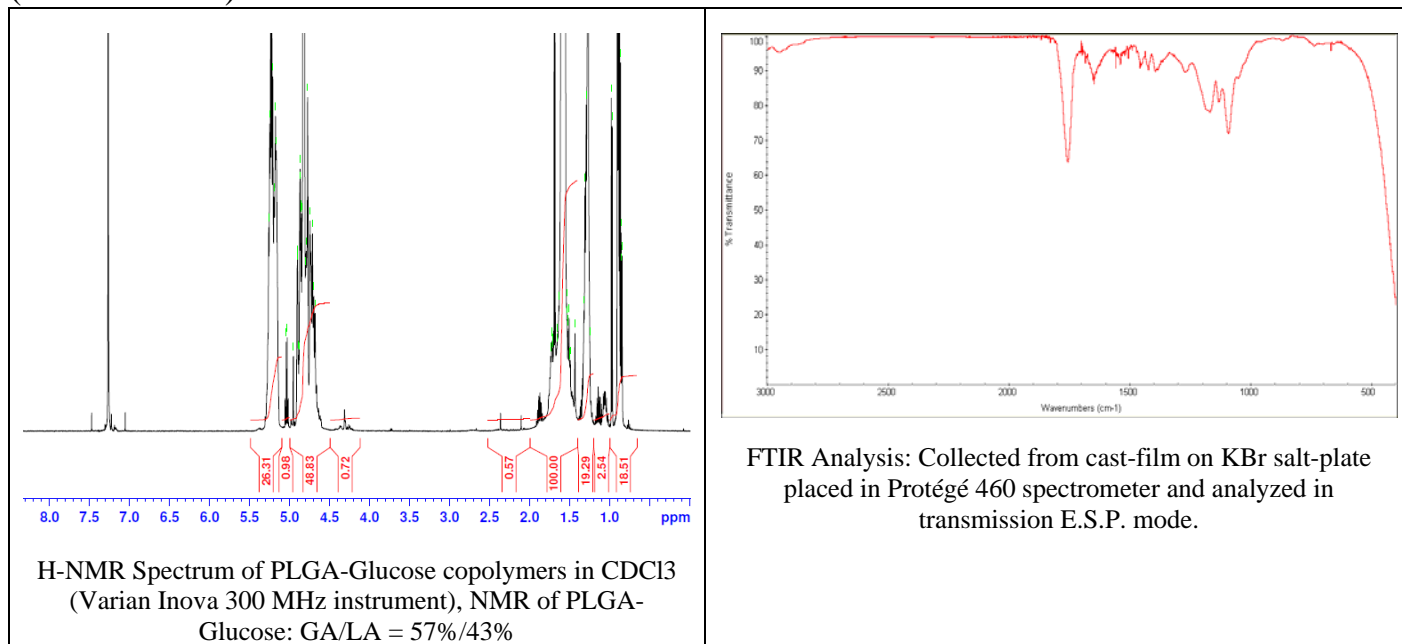
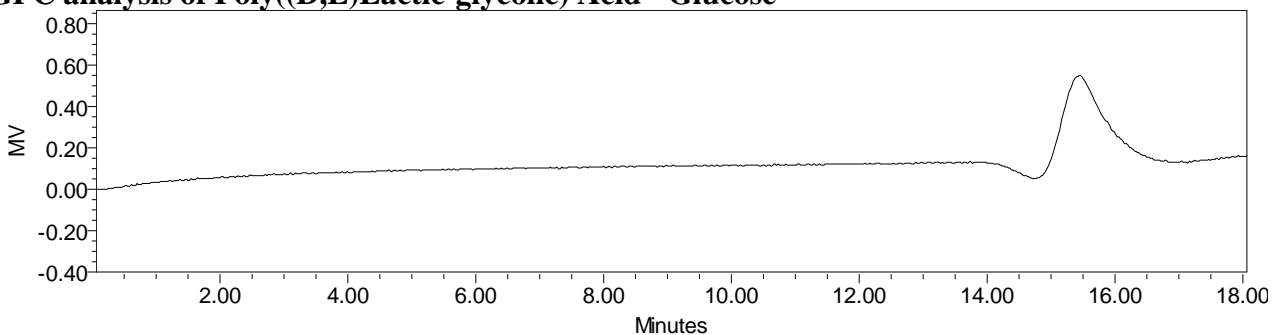


No. AP191 Certificate of Analysis

Product Name: Poly((D,L)Lactic-glycolic) Acid - Glucose (MW ~90,000-130,000 Da)
(60830BPR-A)



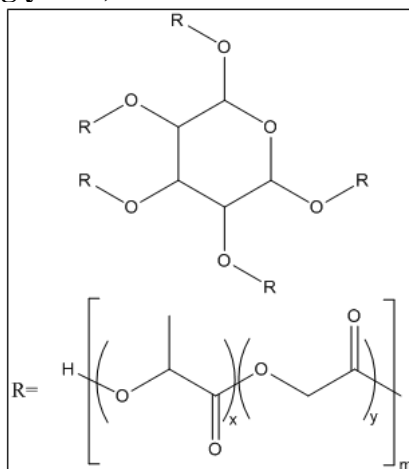
- **GPC analysis of Poly((D,L)Lactic-glycolic) Acid - Glucose**



Analysis Method: Waters Breeze 2 system with 1 ml/min DCM flow across three GPC columns (7.6 x 300 mm, mixed porosities).
Detection via refractive index, calibrated against polystyrene standards.

Polymer	Mn (from GPC)	Mw (from GPC)	PDI
PLGA-Glucose	118,178	121,705	1.03

- **Structure of Poly((D,L)Lactic-glycolic) Acid - Glucose**



Material provided for research use only. Not for human use.