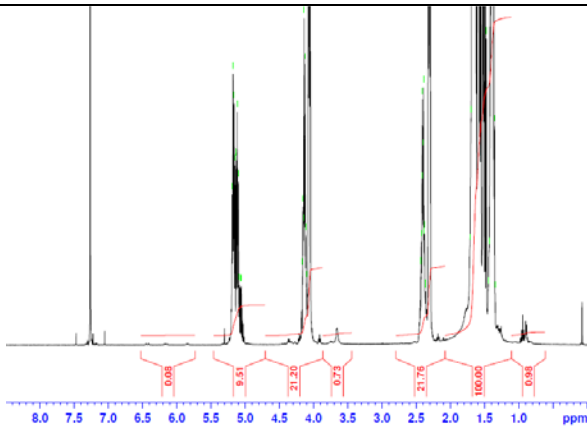


No. AP189

Certificate of Analysis

Product Name: Poly(L-lactide-co-caprolactone) Copolymer acid endcap (50:50 LA:CL, M_n : 25,000-35,000 Da) (Lot#: 60907ELH-A)

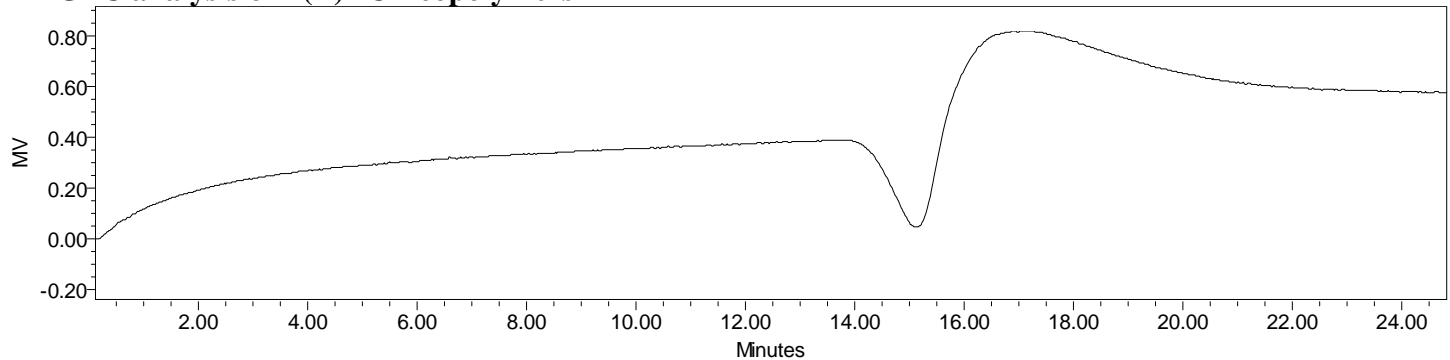


H-NMR Spectrum of P(L)LCL copolymers in CDCl₃ (Varian Inova 500 MHz instrument), NMR of P(L)LCL copolymers:
LA/CL = 47%/53% molar ratio (36%/64% w/w)



FTIR Analysis: Collected from cast-film on KBr salt-plate placed in Protégé 460 Spectrometer (Nicolet) and analyzed in Transmission E.S.P. mode.

- **GPC analysis of P(L)LCL copolymers**



Analysis Method: Waters Breeze 2 system with 1 ml/min DCM flow across three GPC columns (7.6 x 300 mm, mixed porosities). Detection via refractive index, calibrated against polystyrene standards.

| Polymer | M_n (from GPC) | M_w (from GPC) | PDI |
|---------|------------------|------------------|------|
| P(L)LCL | 32,294 | 52,725 | 1.63 |

- **Structure of P(L)LCL copolymers**

