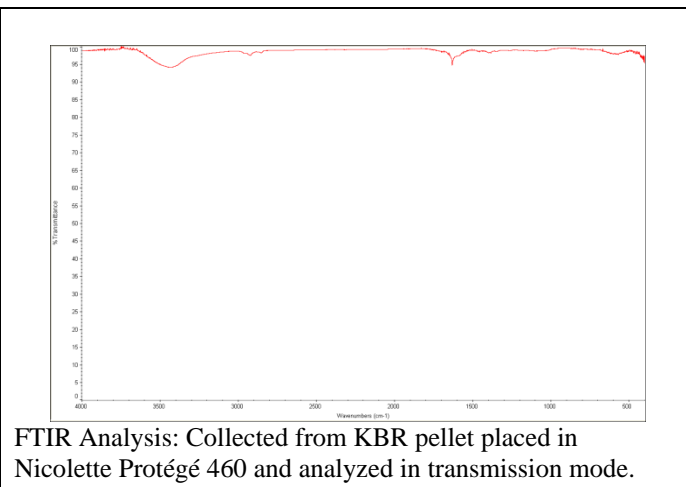
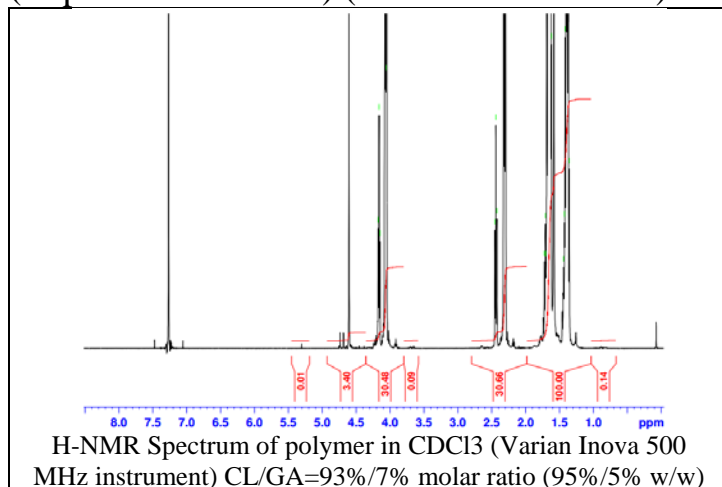


No. AP185

Certificate of Analysis

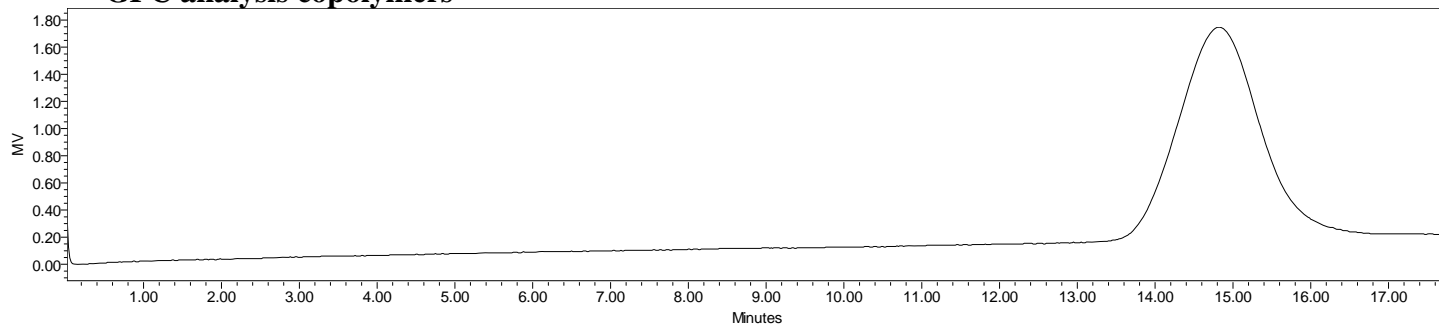
Product Name: Poly(glycolide-co-caprolactone) (CL:GA 95:15, I.V. 1.75-2.3 dL/g)
(Capromaxx CG 955) (Lot# BB0302-239D)



Manufacturer provided data

Test	Specification	Result
Appearance (Color)	White to Off white	Off White
Appearance (Form)	Chips or Chunks	Chunks
Inherent Viscosity (IV) (0.1% in chloroform at 25°C)	1.75-2.3 dL/g	1.95 dL/g
Thermal Analysis (DSC)	Melting Point: 55 to 65°C Glass Transition Temperature: -65 to -55°C	T _m 56.6°C T _g -60.8°C

• GPC analysis copolymers



Analysis Method: Waters Breeze 2 system with 1 ml/min DCM flow across three 300 x 7.6 mm GPC columns (mixed porosities). Detection via refractive index, calibrated against polystyrene standards

Polymer	M _n (from GPC)	M _w (from GPC)	PDI
Capromaxx CG 955	142,899	149,498	1.05

• Structure of polymer

