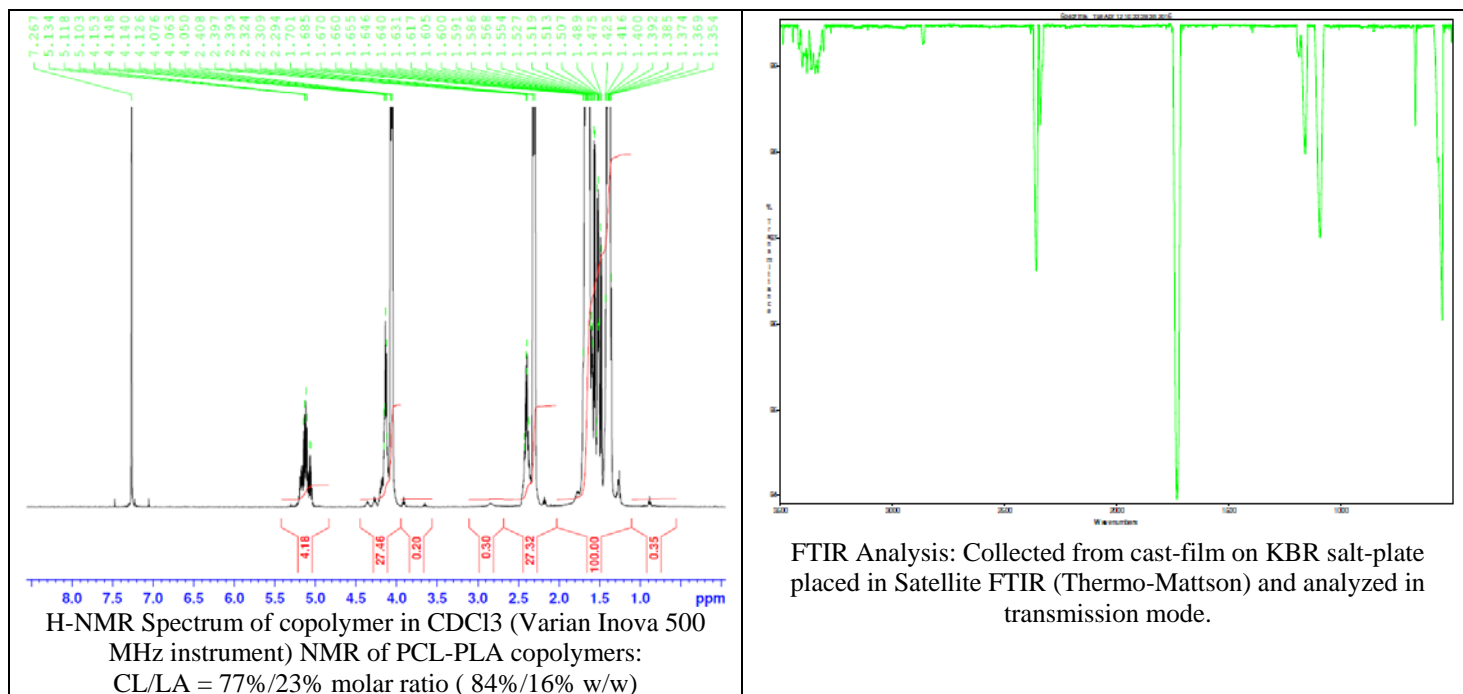
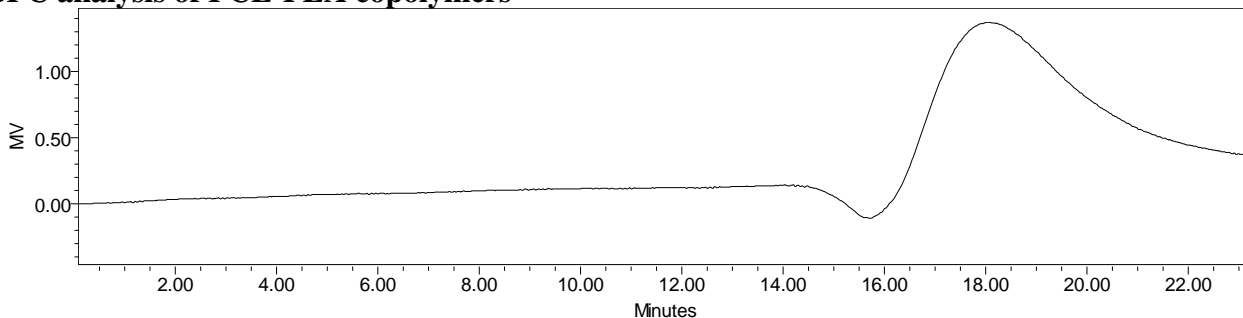


No. AP177 Certificate of Analysis

Product Name: Poly(L-Lactic-co-caprolactone) copolymer ester endcap (25:75 LA:CL, Mn: 25,000-35,000 Da) (Lot#: 60407MJK-A)



- GPC analysis of PCL-PLA copolymers**



Analysis Method: Varian Prostar system with 1 ml/min DCM flow across two PLgel mixed-D columns and one Mixed-E column (Agilent). Detection via UV/Vis, calibrated against polystyrene standards

Polymer	Mn (from GPC)	Mw (from GPC)	PDI
PCL-PLA	25,038	33,169	1.32

Structure of PCL-PLA copolymers

