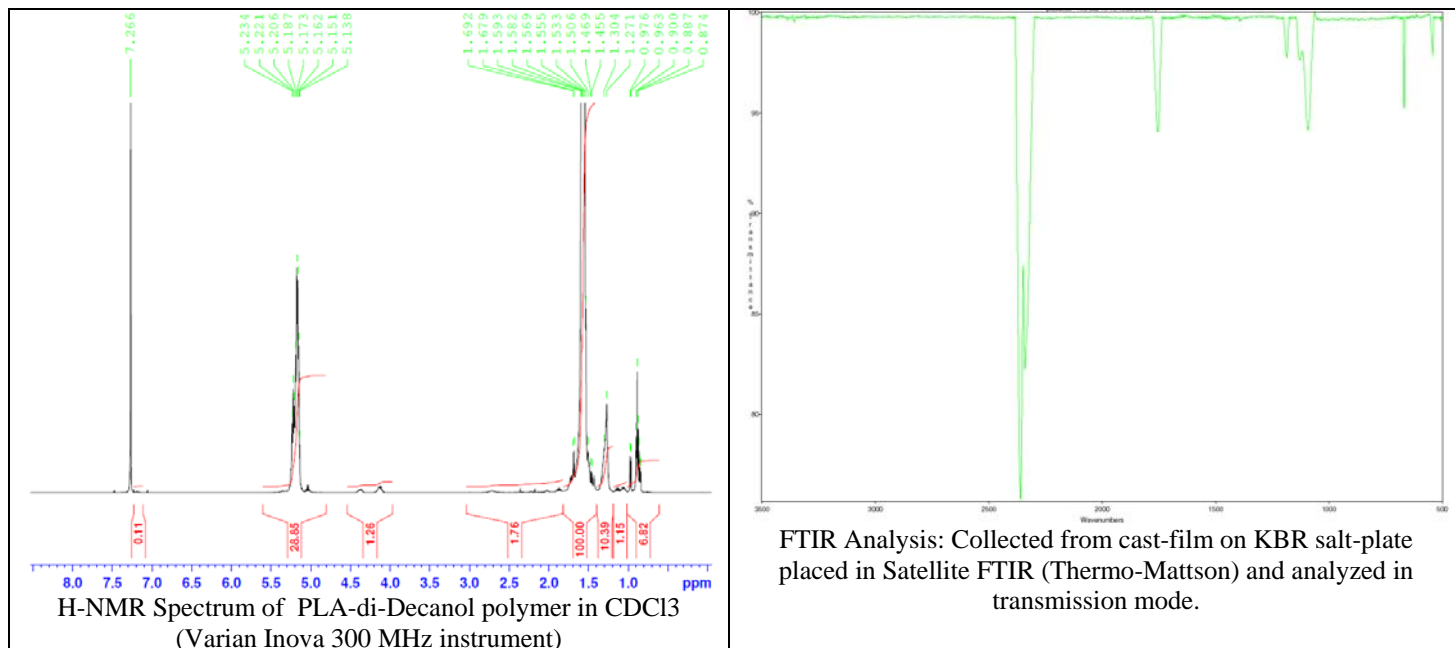


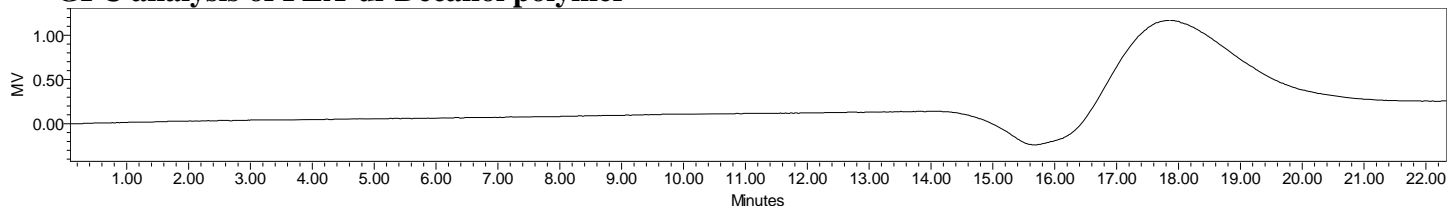
# No.AP168

# Certificate of Analysis

Product Name: Poly(DL-lactide) dialcohol endcapped (1,10 decadiol initiated) (Mn 10,000-15,000Da) (Lot# 60308JCH)



- **GPC analysis of PLA-di-Decanol polymer**



Analysis Method: Waters Breeze 2 system with 1 ml/min DCM flow across two Phenogel 5µm columns and one PLgel mixed-D column (Agilent). Detection via RI, calibrated against polystyrene standards

Polymer	Mn (from GPC)	Mw (from GPC)	PDI
PLA Precursor	14,309	27,755	1.94

- **Structure of PLA-di-Decanol polymer**

