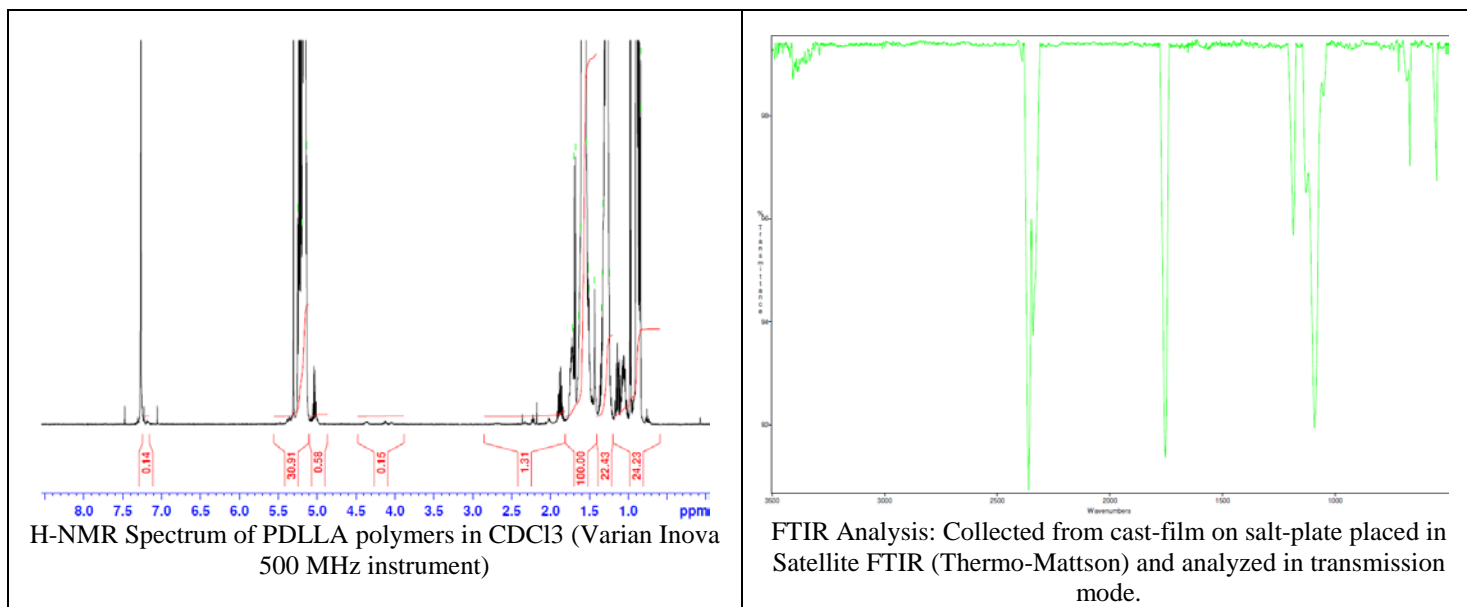
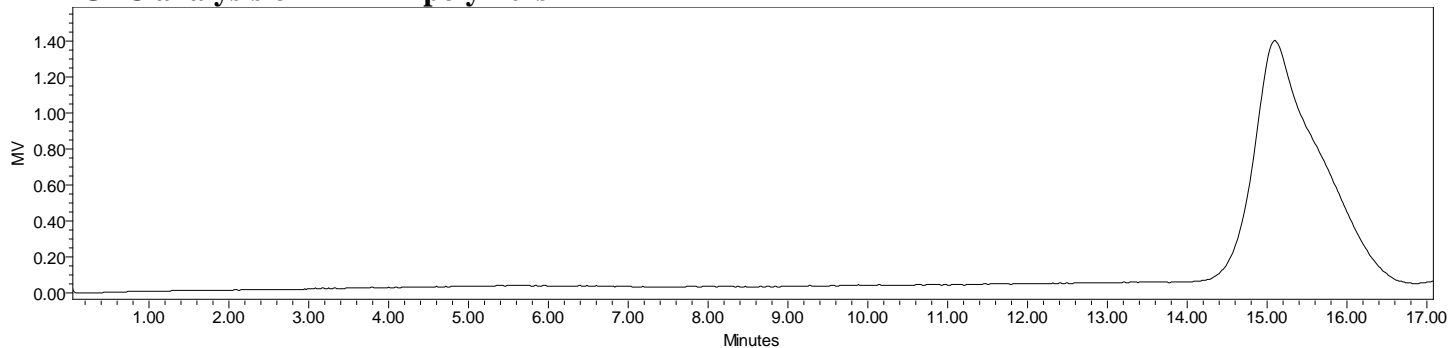


No. AP164 Certificate of Analysis

Product Name: Poly(DL-lactide) ester endcapped (Mn: 100,000-200,000 Da) (Lot#: 60108ELH-A)



- **GPC analysis of PDLLA polymers**



Analysis Method: Varian Prostar system with 1 ml/min DCM flow across two Phenogel 5 μ m columns and one PLgel Resipore column (Agilent). Detection via UV/Vis, calibrated against polystyrene standards.

Polymer	Mn (from GPC)	Mw (from GPC)	PDI
PDLLA	170,293	178,224	1.05

- **Structure of PDLLA polymers**

