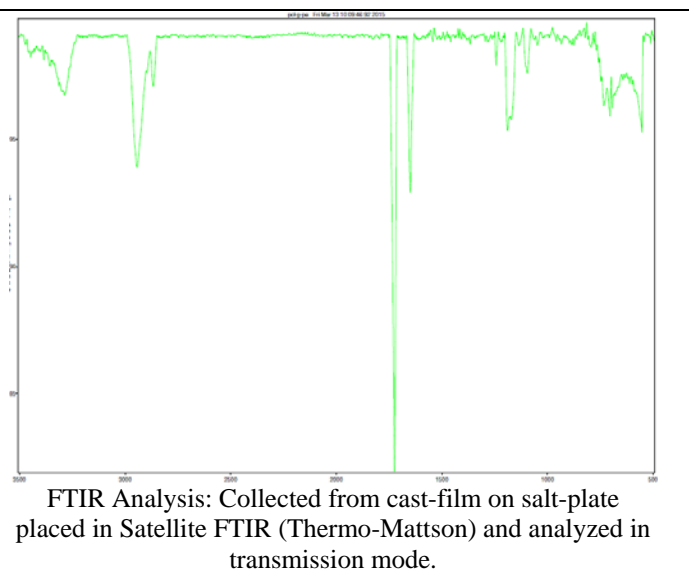
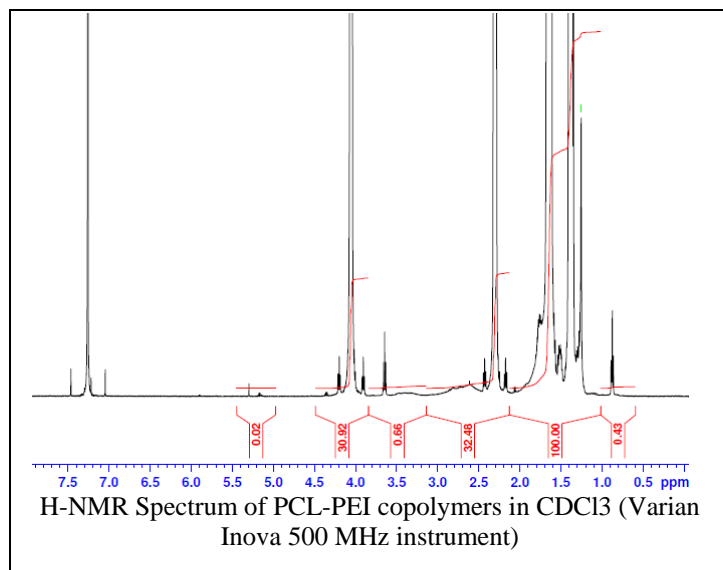
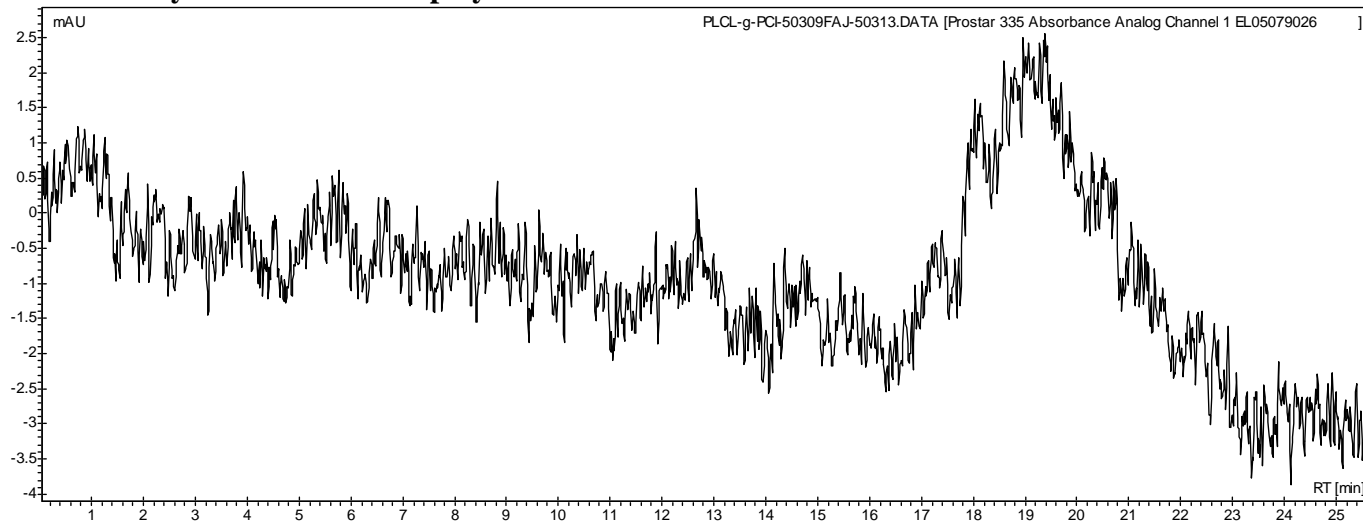


No. AO43 Certificate of Analysis

Product Name: Polycaprolactone-b-branched Polyethyleneimine copolymers (PCL-b-PEI Mw ~ 40,000-800Da) (Lot# 50309FAJ)



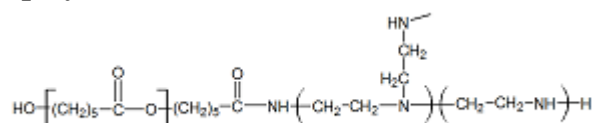
• GPC analysis of PCL-PEI copolymers



Analysis Method: Varian Prostar system with 1 ml/min DCM flow across two Resipore 3 um columns and one Mixed E column (Varian) and with UV-Vis (PDA) detection. Calibrated against polystyrene standards

Polymer	Mn (from GPC)	Mw (from GPC)	PDI
PCL-PEI	22,923	63,838	2.78

• Structure of PCL-PEI copolymers



Material provided for research use only. Not for human use.