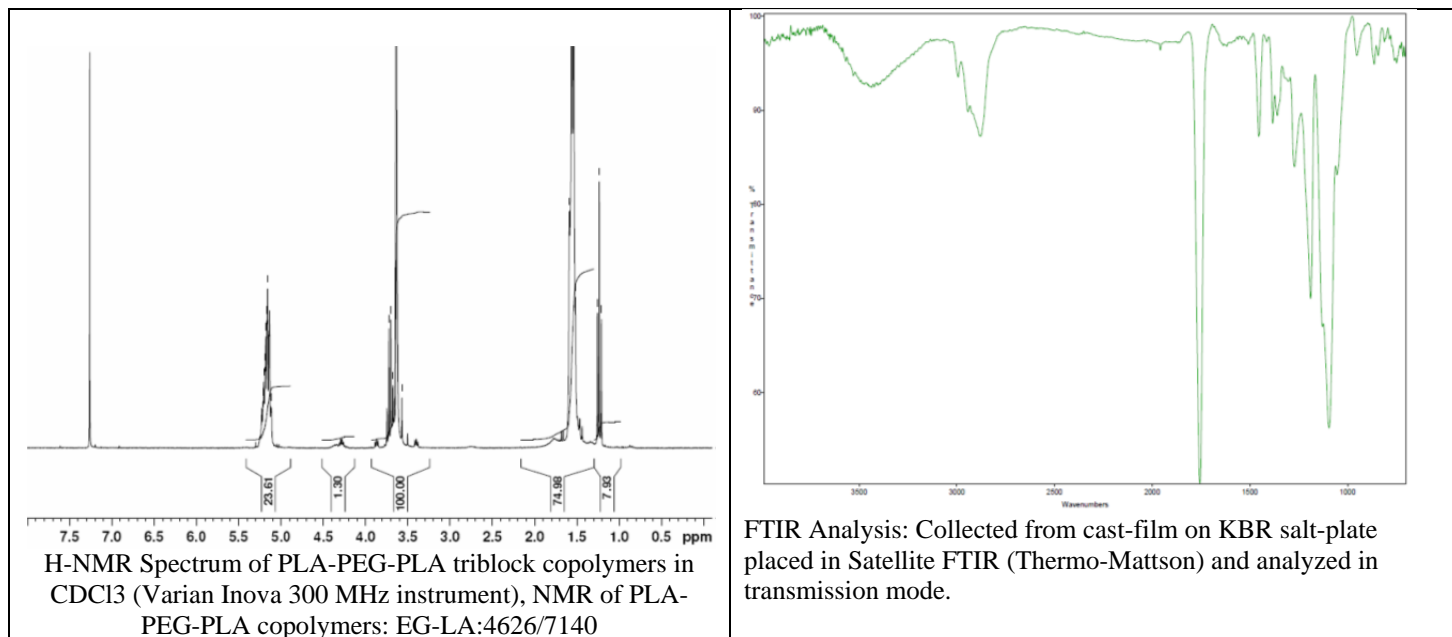


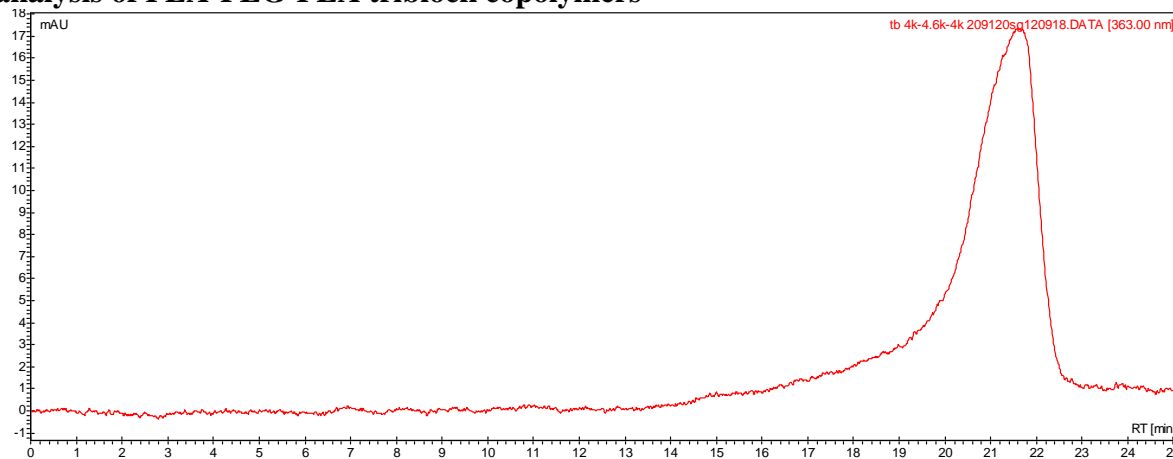
No. AK39

# Certificate of Analysis

Product Name: Poly((D,L) lactic acid)-*b*-Poly(ethylene glycol)-*b*-Poly((D,L) lactic acid) triblock copolymers (4000-4600-4000Da) (Lot# 20910JSG)



- GPC analysis of PLA-PEG-PLA triblock copolymers



Analysis Method: Varian Prostar system with 1 ml/min DCM flow across two PLgel mixed-D columns and one Mixed-E column (Agilent). Detection via UV/Vis, calibrated against polystyrene standards

Polymer	Mn (from GPC)	Mw (from GPC)	PDI
PLA-PEG-PLA	10041	13625	1.36

- Chemical Structure of PLA-PEG-PLA triblock copolymers

