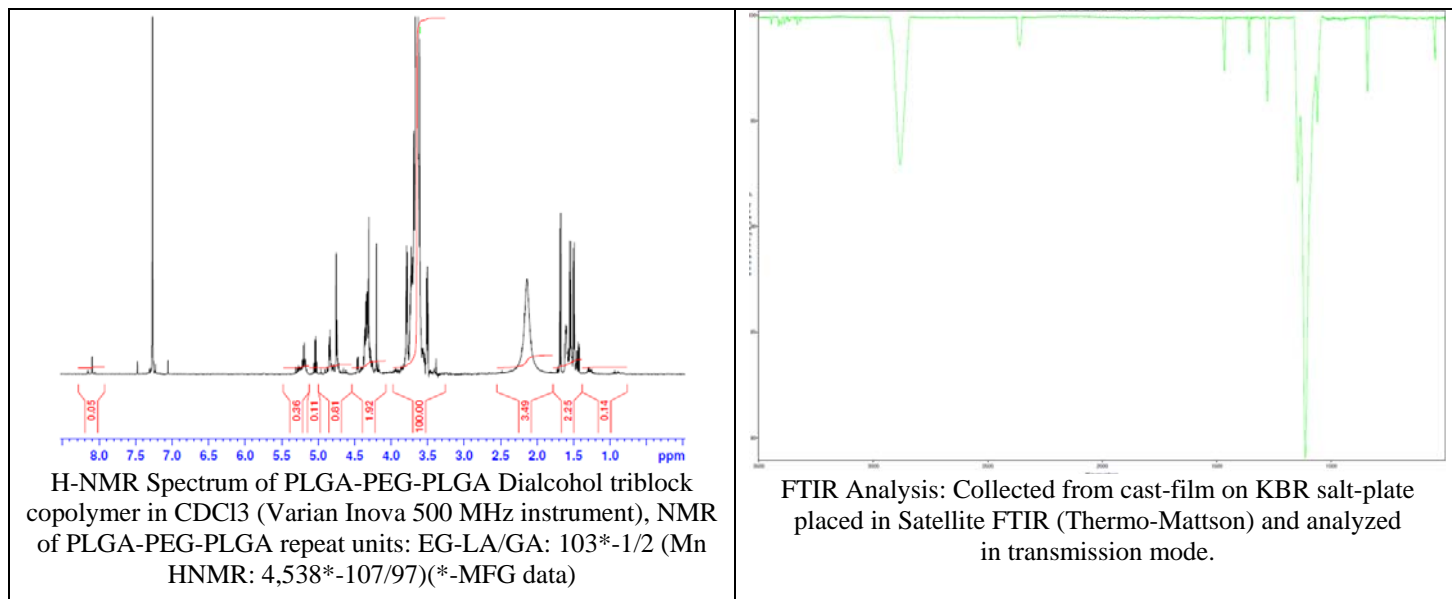
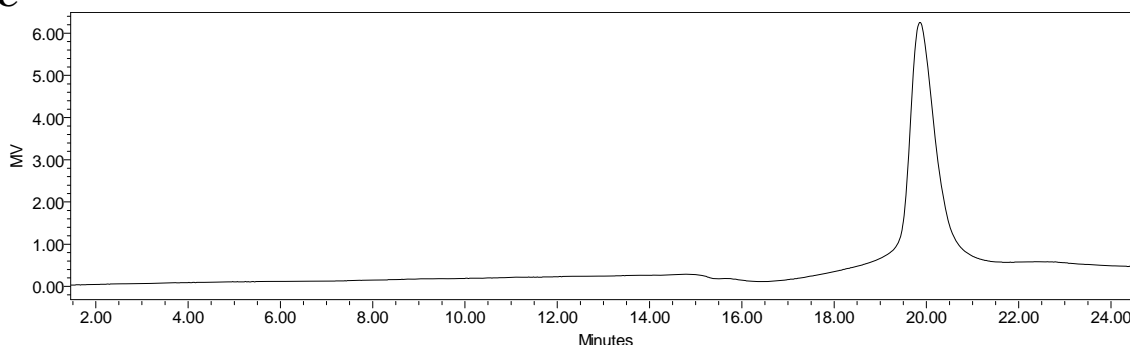


# No. AK124 Certificate of Analysis

Product Name: Poly(lactic-co-glycolic acid)-*b*-Poly(ethylene glycol)-*b*-Poly(lactic-co-glycolic acid) copolymers, (Mw ~ 200:5,000:200 Da LA:GA 65:35) Lot# 60613MJK-A



- GPC**

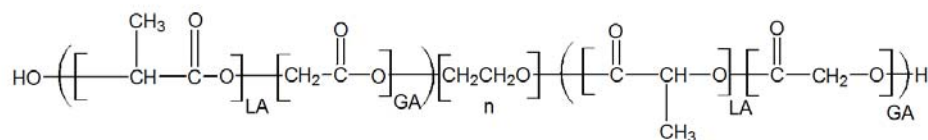


Analysis Method: Waters Breeze 2 system with 1 ml/min DCM flow across three 300x7.6 mm GPC columns (mixed porosities). Detection via refractive index, calibrated against polystyrene standards.

Polymer	Mn (GPC)	Mw (GPC)	PDI
PLGA-PEG-PLGA Dialcohol	5737	6288	1.10
PEG precursor	Mn – 4,536*		

\*- MFG provided data.

- Structure of PLGA-PEG-PLGA Dialcohol copolymer**



Material provided for research use only. Not for human use.