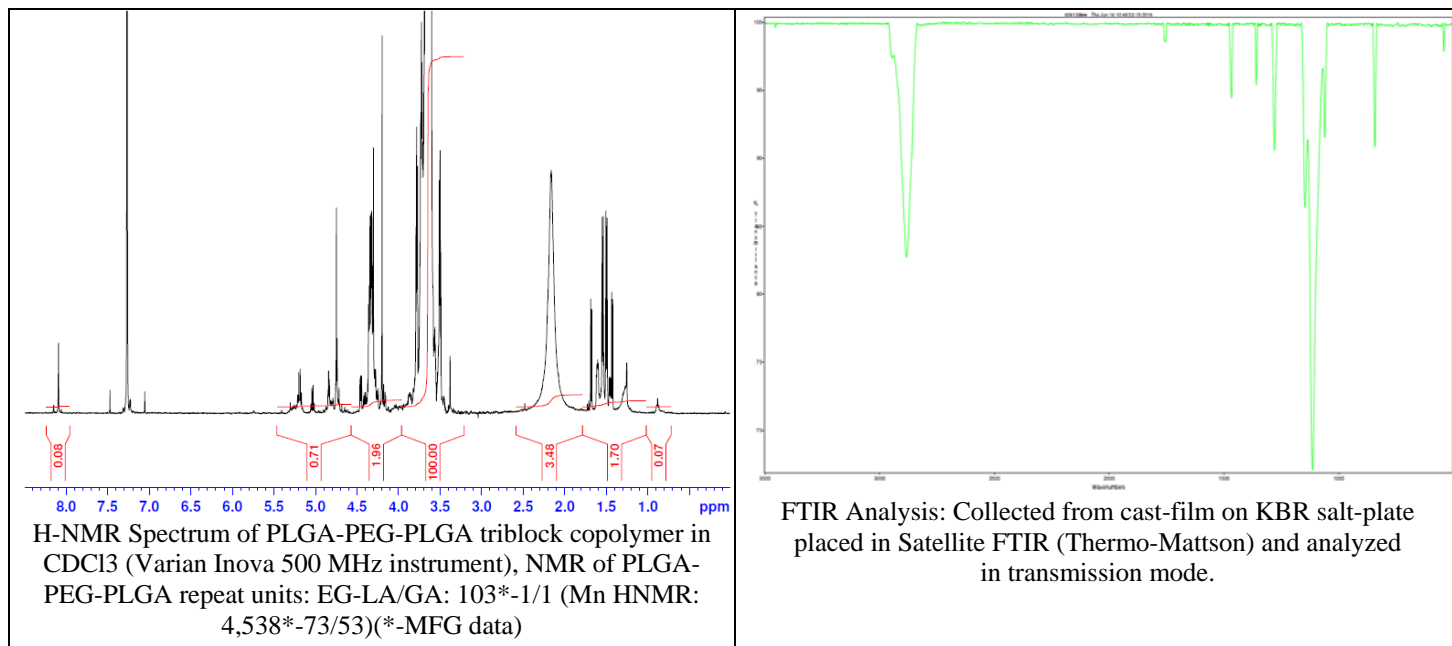
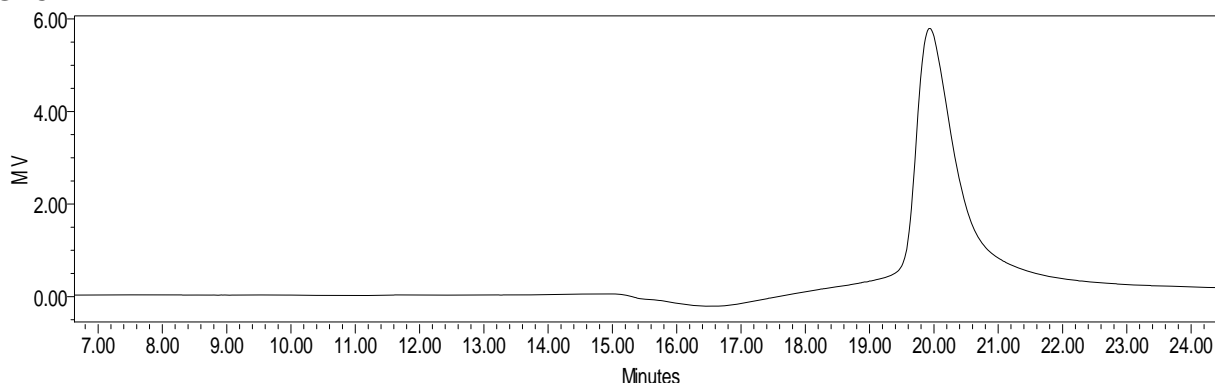


No. AK122 Certificate of Analysis

Product Name: Poly(lactic-co-glycolic acid)-*b*-Poly(ethylene glycol)-*b*-Poly(lactic-co-glycolic acid) copolymers, (Mw ~ 130:5,000:130 Da, LA:GA 50:50) Lot# 60613DWW-A



- GPC**

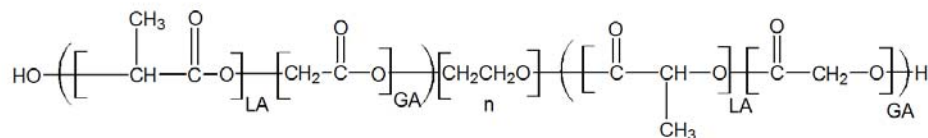


Analysis Method: Waters Breeze 2 system with 1 ml/min DCM flow across three 300x7.6 mm GPC columns (mixed porosities). Detection via refractive index, calibrated against polystyrene standards.

| Polymer | Mn (GPC) | Mw (GPC) | PDI |
|---------------|-------------|----------|------|
| PLGA-PEG-PLGA | 4956 | 5974 | 1.21 |
| PEG precursor | Mn - 4,536* | | |

*- MFG provided data.

- Structure of PLGA-PEG-PLGA copolymer**



Material provided for research use only. Not for human use.