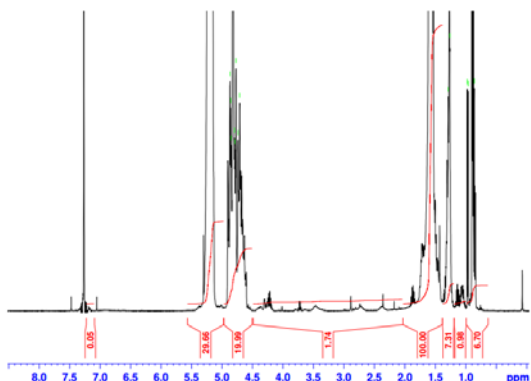


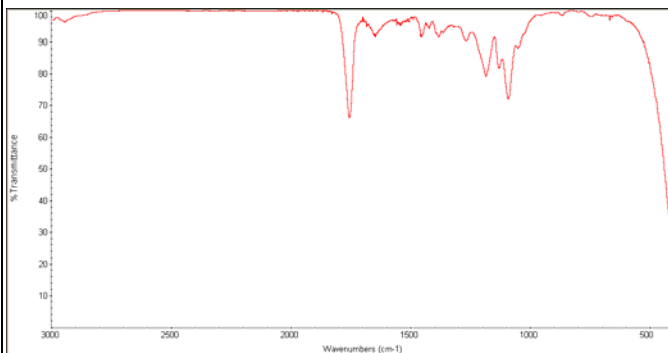
# No. AI143

# Certificate of Analysis

Product Name: Poly(lactide-co-glycolide) ethylene diamine endcap (Mn: 30,000-50,000 Da, LA:GA 75:25) (Lot#: 60722DWW-A)

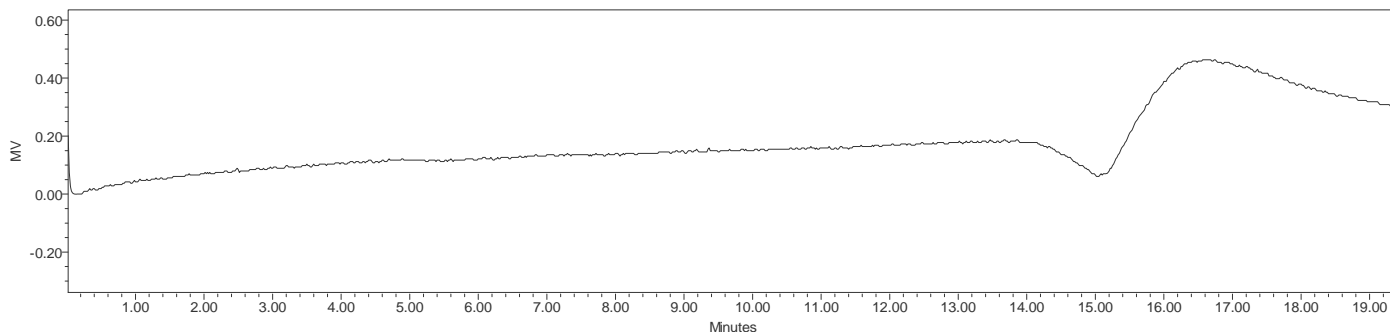


H-NMR Spectrum of PLGA-amine copolymers in CDCl<sub>3</sub> (Varian Inova 500 MHz instrument), NMR of PLGA-amine copolymers: LA/GA = 75%/25% molar ratio (79%/21% w/w)



FTIR Analysis: Collected from cast-film on salt-plate placed in Protégé 460 FTIR (Nicolet) and analyzed in transmission mode.

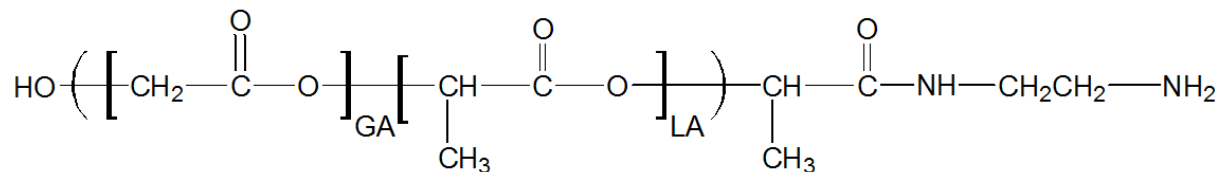
- **GPC analysis of PLGA-NH<sub>2</sub> copolymers**



Analysis Method: Waters Breeze 2 system with 1 ml/min DCM flow across three Phenogel 5um columns (Phenomenex). Detection via refractive index, calibrated against polystyrene standards.

| Polymer              | Mn (from GPC) | Mw (from GPC) | PDI  |
|----------------------|---------------|---------------|------|
| PLGA-NH <sub>2</sub> | 41,051        | 47,328        | 1.12 |

- **Structure of PLGA-NH<sub>2</sub> copolymers**



Material provided for research use only. Not for human use.