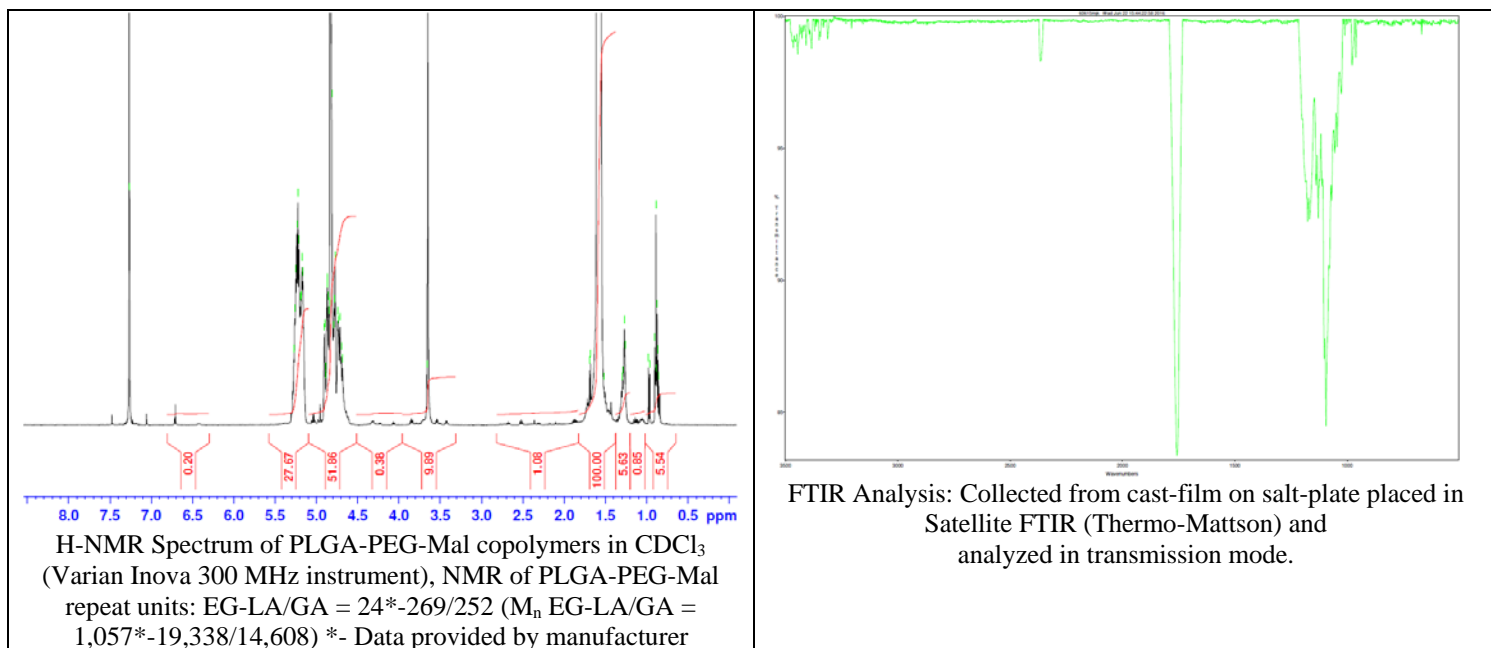


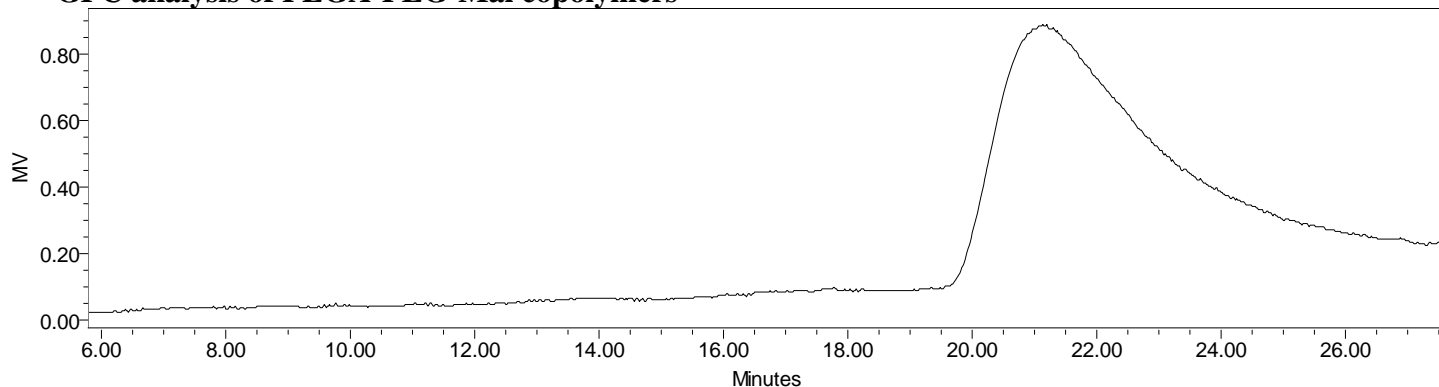
No. AI135

Certificate of Analysis

Product Name: Poly(lactic-co-glycolic)-b-Poly(ethylene glycol)-Maleimide copolymers
($M_w \sim 40,000-1,000\text{Da}$, 50:50) (Lot#: 60615MJK-A)



• GPC analysis of PLGA-PEG-Mal copolymers

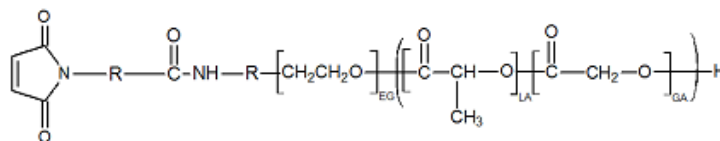


Analysis Method: Waters Breeze 2 system with 1 ml/min DCM flow across three 300x7.6 mm GPC columns (mixed porosities).
Detection via refractive index, calibrated against polystyrene standards.

Polymer	M_n (from GPC)	M_w (from GPC)	PDI
PLGA-PEG-Mal	68,571	92,979	1.36
PEG Precursor	M_n by GFC – 1,080*		

*-data provided by manufacturer

• Structure of PLGA-PEG-Mal copolymers



Material provide for research use only. Not for human use.