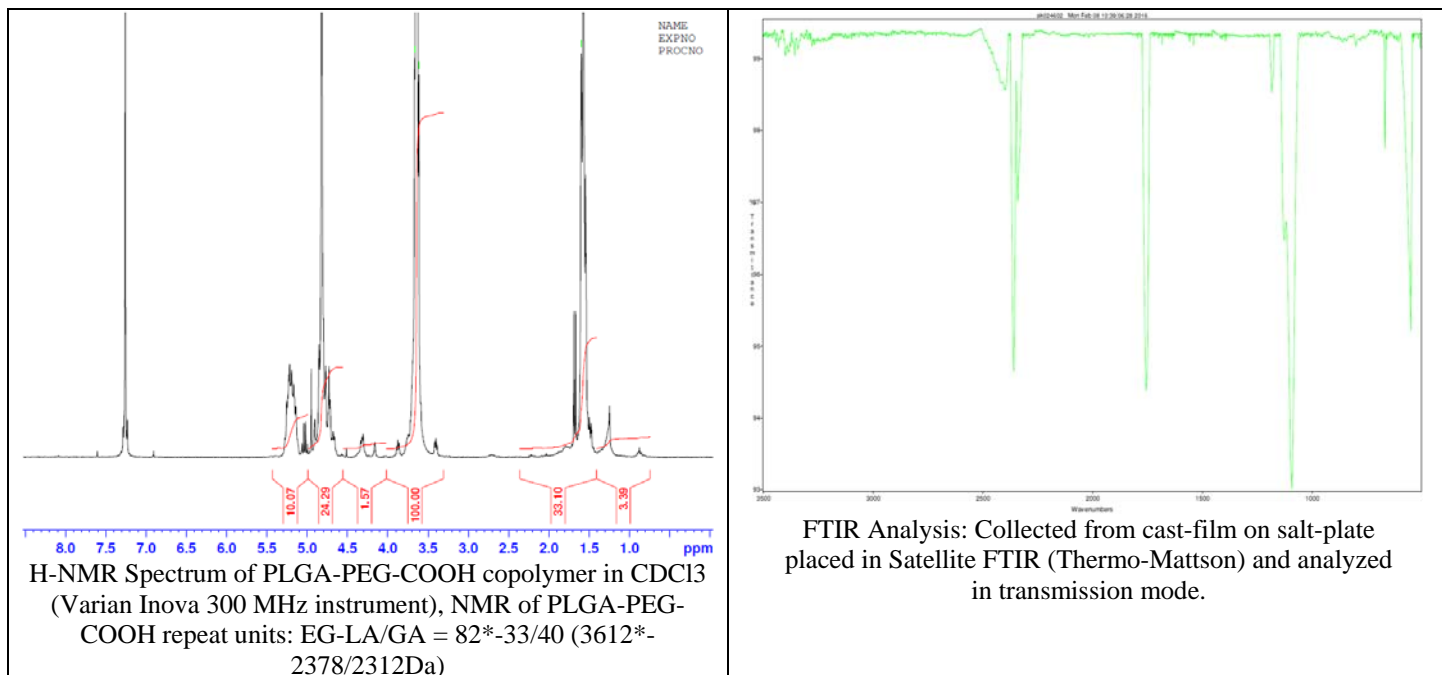
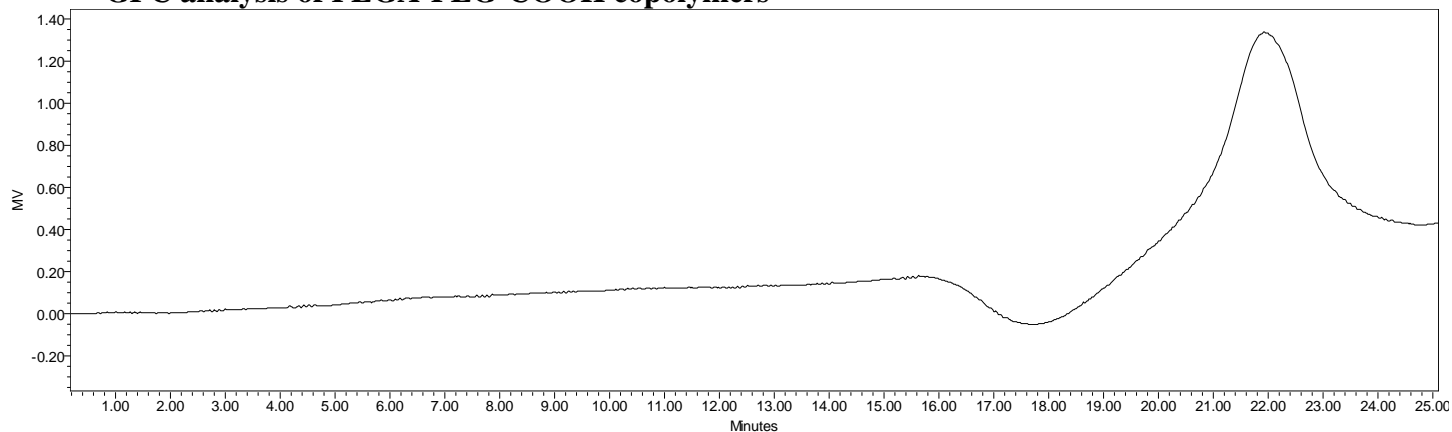


No. AI120 Certificate of Analysis

Product Name: Poly(lactide-co-glycolide)-b-Poly(ethylene glycol)-carboxylic acid endcap
 (~5,000Da-3,500Da 50:50 LA:GA) (Lot#: 60205JCH-A)



- GPC analysis of PLGA-PEG-COOH copolymers**



Analysis Method: Waters Breeze 2 system with 1 ml/min DCM flow across three Phenogel 5um columns (Phenomenex). Detection via refractive index, calibrated against polystyrene standards.

Polymer	Mn (from GPC)	Mw (from GPC)	PDI
PLGA-PEG-COOH	6043	9451	1.56
HO-PEG-COOH*	Average Mn by GFC -3600Da*		

* - data provided by MFG

- Structure of PLGA-PEG-COOH copolymers**

