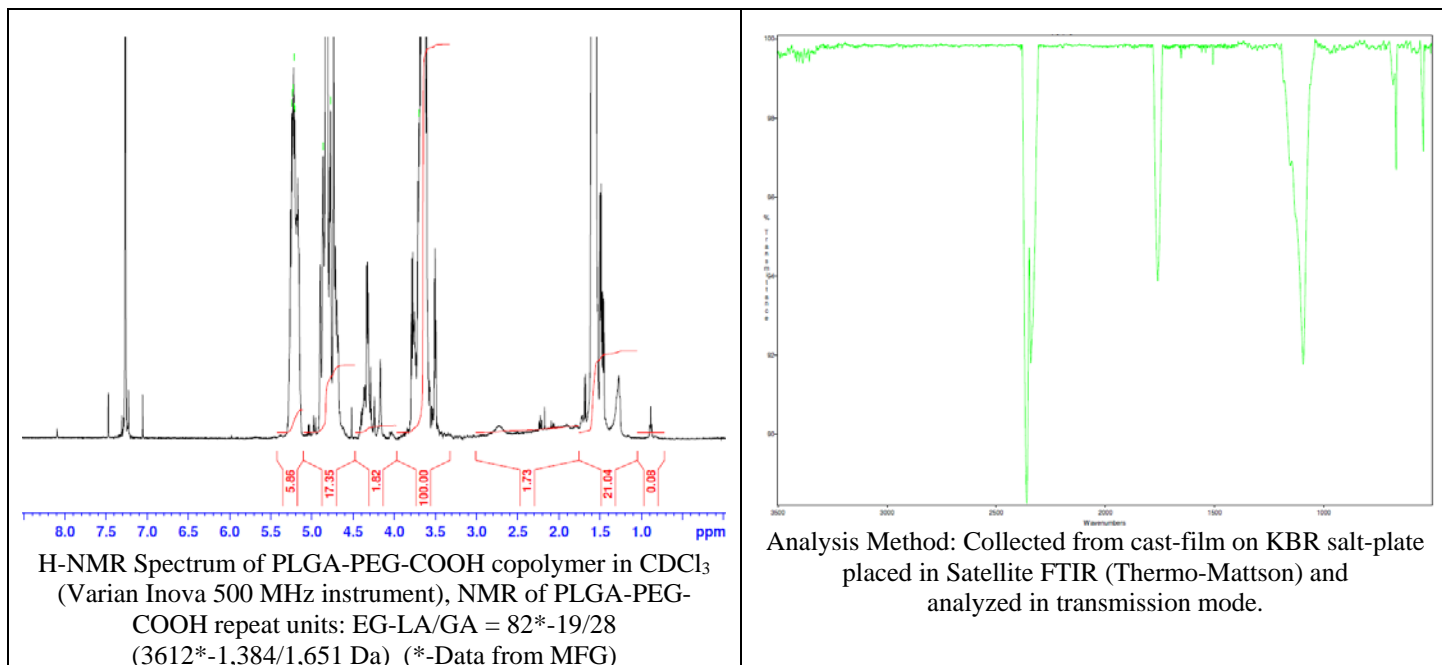
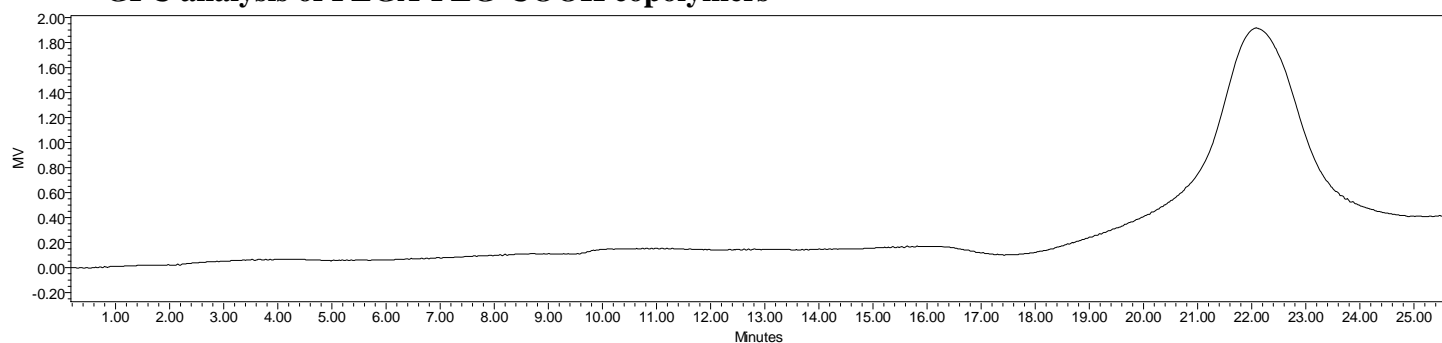


No. AI118 Certificate of Analysis

Product Name: Poly(lactide-co-glycolide)-*b*-Poly(ethylene glycol)-Carboxylic acid endcap
($M_w \sim 3,000$: $3,400$ Da, 50:50 LA:GA) (Lot#: 60113JCH-A)



- **GPC analysis of PLGA-PEG-COOH copolymers**

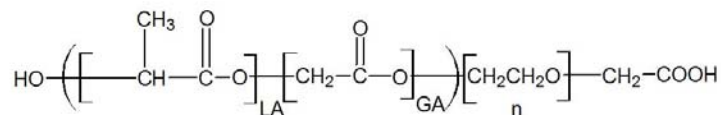


Analysis Method: Waters Breeze 2 system with 1 ml/min DCM flow across three Phenogel 5um columns (Phenomenex). Detection via refractive index, calibrated against polystyrene standards.

| Polymer | M_n (from GPC) | M_w (from GPC) | PDI |
|---------------|----------------------------------|------------------|------|
| PLGA-PEG-COOH | 5,088 | 7,715 | 1.52 |
| HO-PEG-COOH* | Average M_n by GFC – 3,600 Da* | | |

*-data provided by MFG

- **Structure of PLGA-PEG-COOH copolymers**



Material provided for research use only. Not for human use.