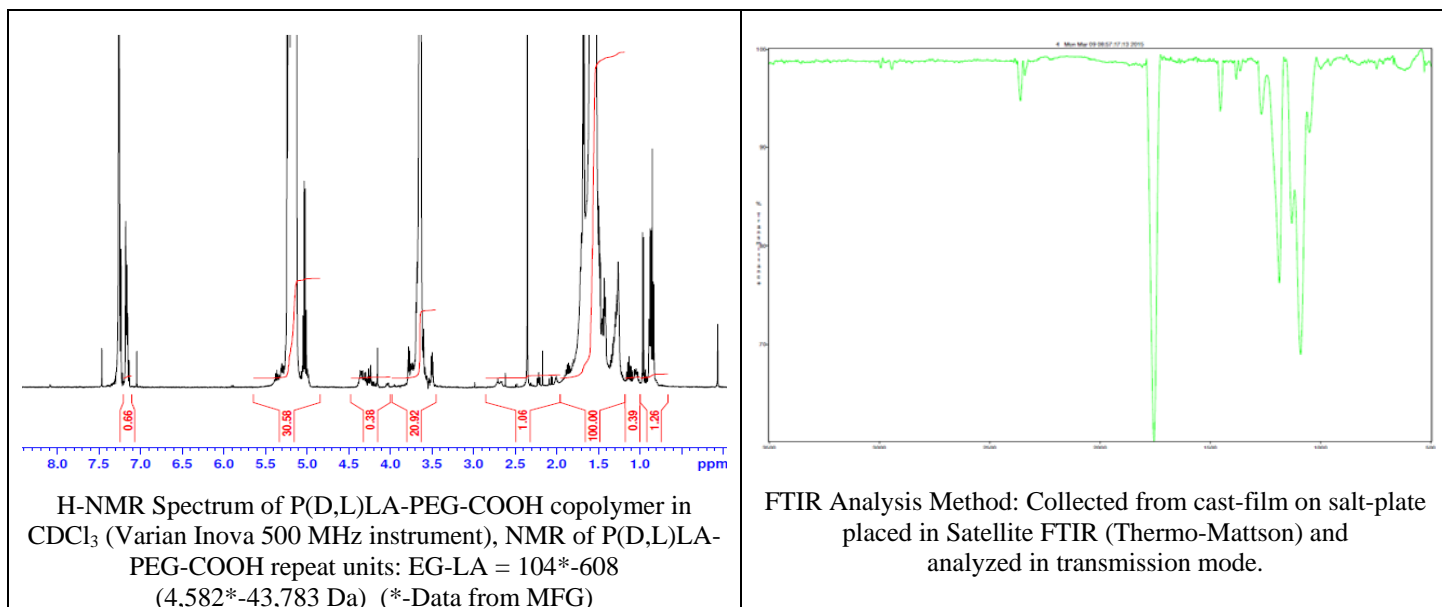
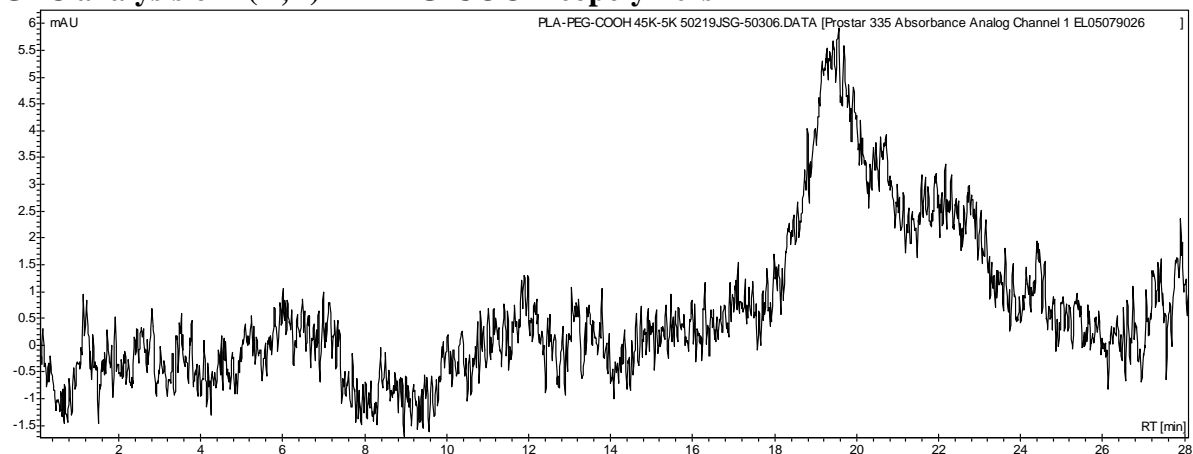


No. AI107 Certificate of Analysis

Product Name: Poly(D,L-lactide)-*b*-Poly(ethylene glycol)-Carboxylic acid endcap
(M_w ~45,000-5,000 Da) (Lot#: 50219JSG)



- GPC analysis of P(D,L)LA-PEG-COOH copolymers**

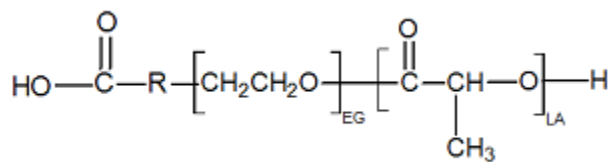


Analysis Method: Varian Prostar system with 1 ml/min DCM flow across two Phenogel 5 μm columns and one PLgel Resipore column (Agilent). Detection via UV/Vis, calibrated against polystyrene standards.

Polymer	M _n (from GPC)	M _w (from GPC)	PDI
P(D,L)LA-PEG-COOH	34259	45643	1.33
HO-PEG-COOH*	Average M _n by GFC – 4,600 Da*		

*-data provided by MFG

- Structure of P(D,L)LA-PEG-COOH copolymers**



Material provided for research use only. Not for human use.