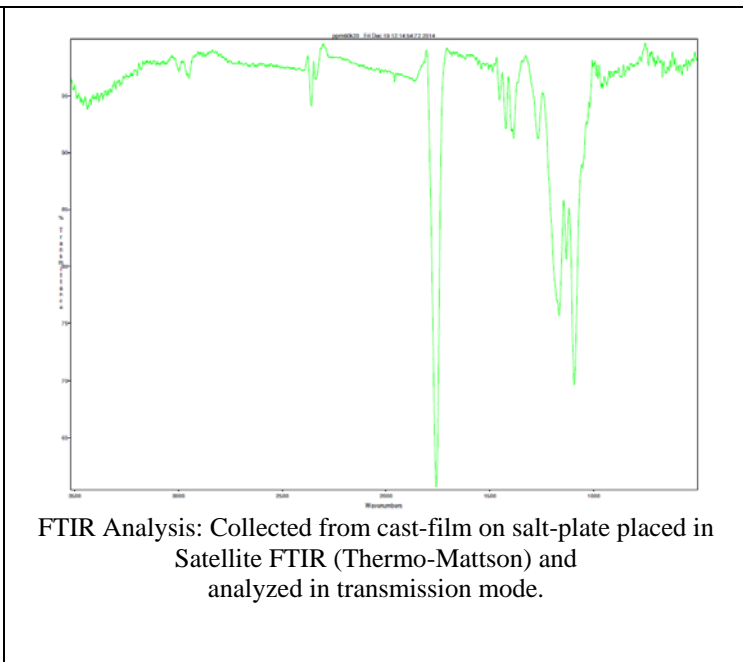
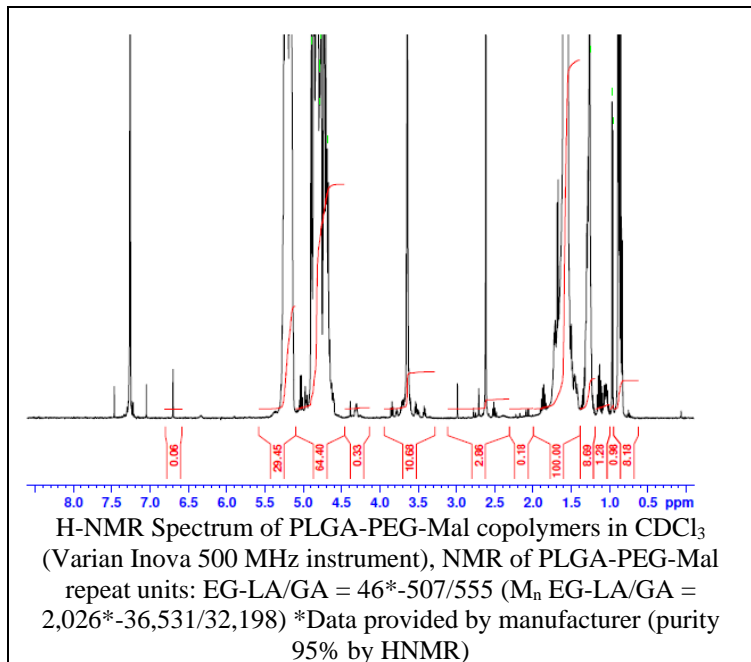


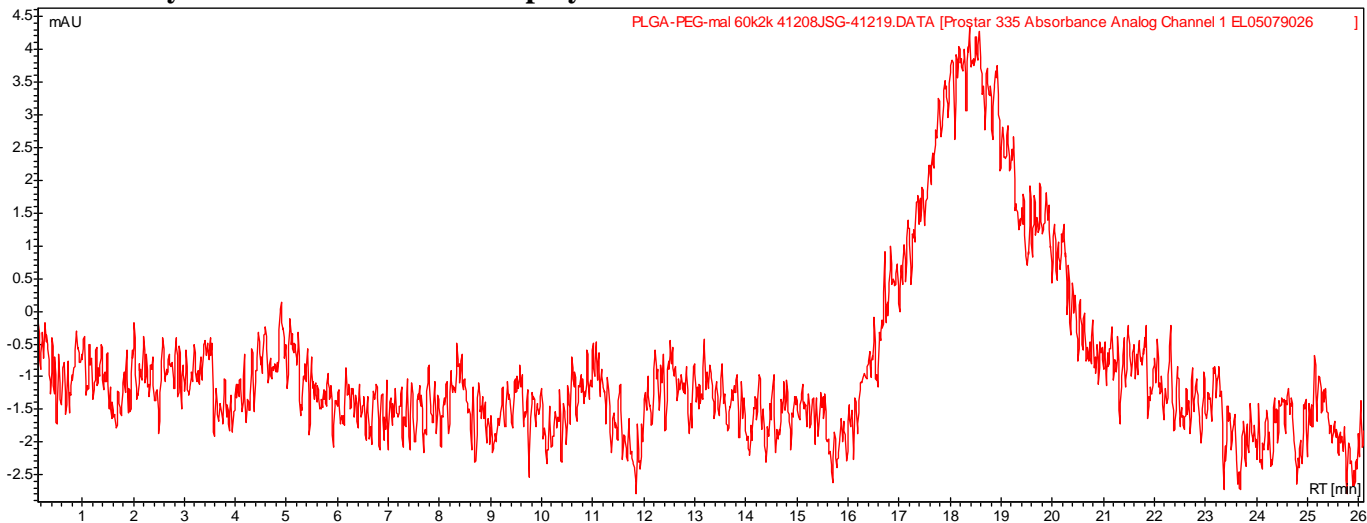
# No. AI101

# Certificate of Analysis

Product Name: Poly(lactic-co-glycolic)-b-Poly(ethylene glycol)-Maleimide copolymers  
( $M_w \sim 60,000-2,000\text{Da}$ ) (Lot#: 41208JSG)



## • GPC analysis of PLGA-PEG-mal copolymers



Polymer	$M_n$ (from GPC)	$M_w$ (from GPC)	PDI
PLGA-PEG-Mal	49,819	96,245	1.93
PEG Precursor	Average $M_n$ by GFC - 2000*		

\*-data provided by manufacturer

## • Structure of PLGA-PEG-Mal copolymers

