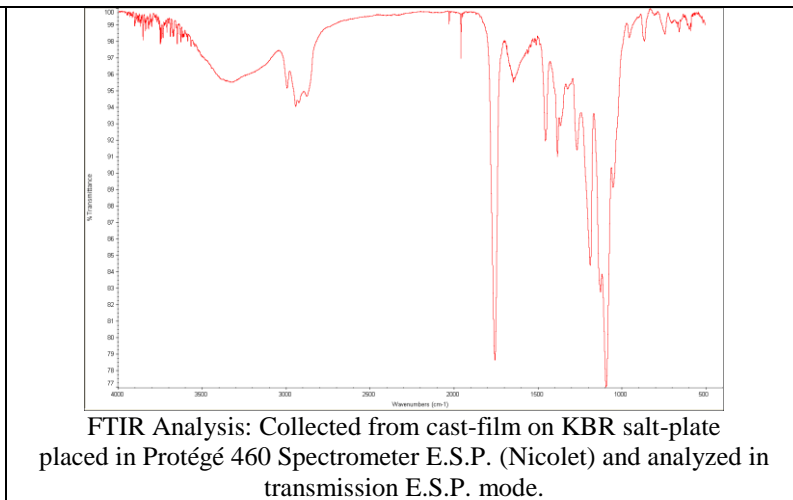
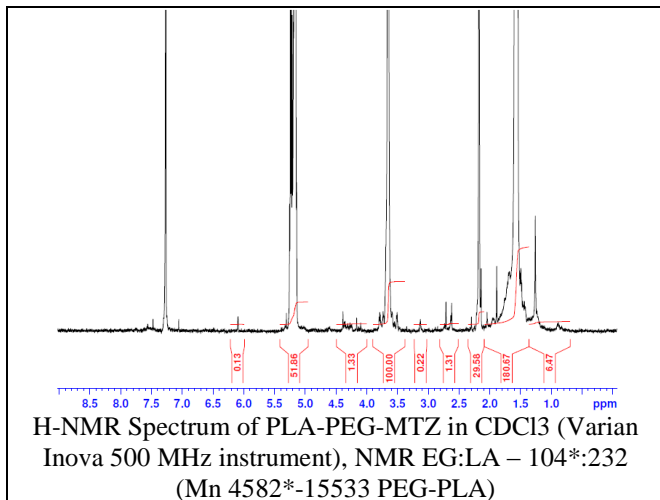


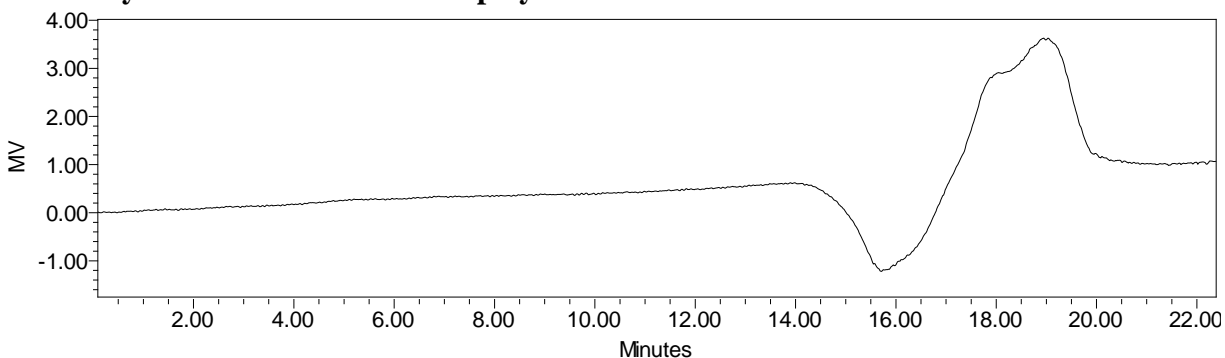
No. AI150

Certificate of Analysis

Product Name: Poly(DL-lactide)-b-poly(ethylene glycol)-methyltetrazine endcap (16,000-5000 Da) (Lot#: 61213JSG-A)



- **GPC analysis of PLA-PEG-MTZ copolymers**



Analysis Method: Waters Breeze 2 system with 1 ml/min DCM flow across three GPC columns (7.8 x 300 mm, mixed porosities). Detection via refractive index, calibrated against polystyrene standards.

Polymer	Mn (from GPC)	Mw (from GPC)	PDI
PLA-PEG-MTZ	22,045	29,002	1.32
PEG precursor	Average Mw by GFC - 4600*		

* - data provided by MFG

- **Structure of PLA-PEG-MTZ copolymers**

