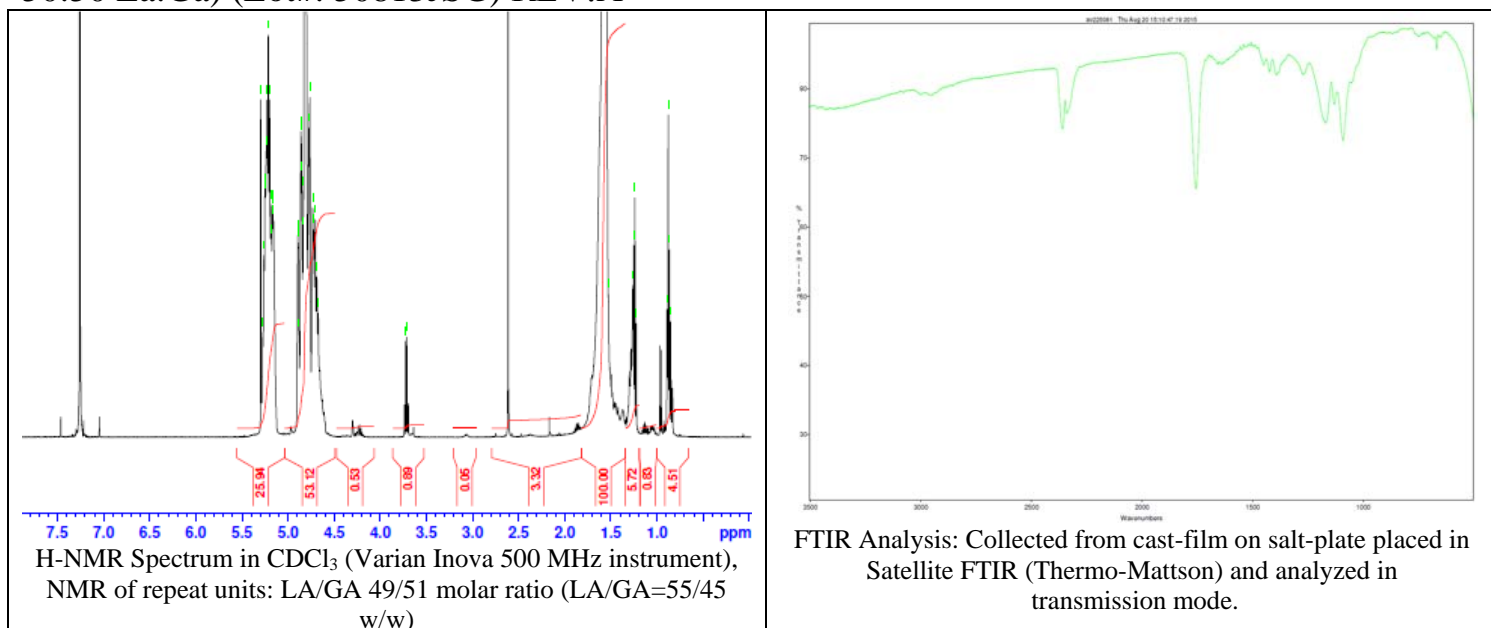


# No. AV22

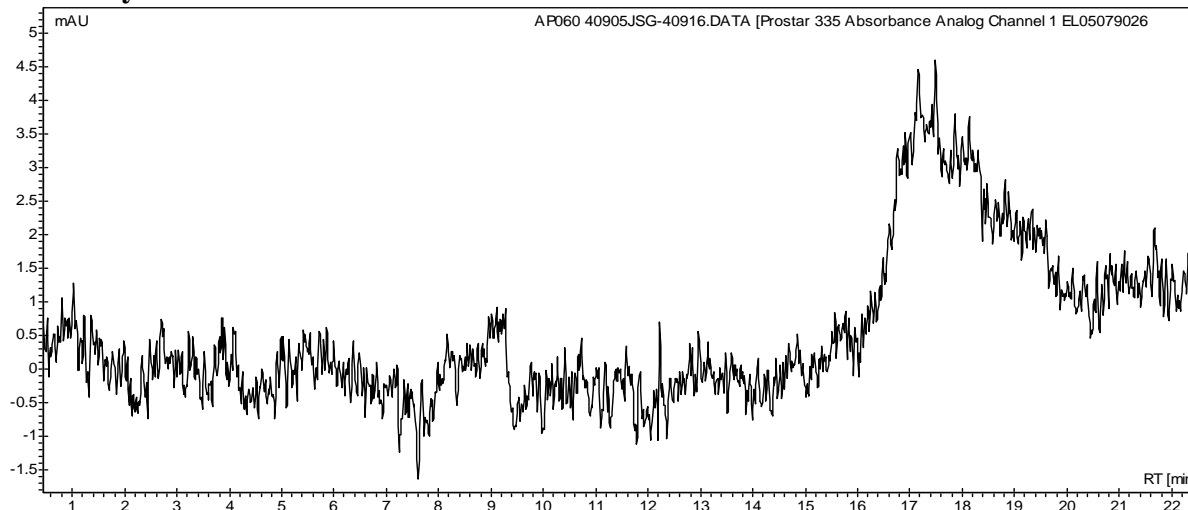
# Certificate of Analysis

Product Name: Poly(lactide-co-glycolide)-FKB350 copolymers (Mn 45,000-55,000Da, 50:50 La:Ga) (Lot#: 50813JSG) REV:A



**FKB350 manufacturer data:** Max absorbance: 352 nm, Max emission: 408nm, common filter set: DAPI

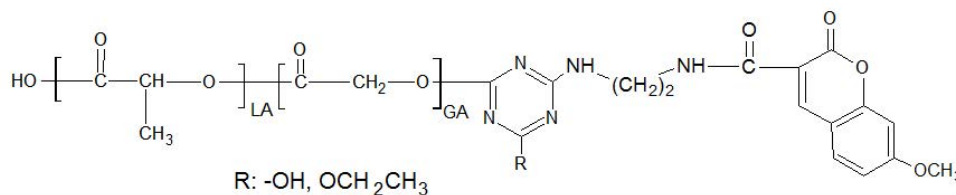
- **GPC analysis**



Analysis Method: Varian Prostar system with 1 ml/min DCM flow across two Phenogel 5 $\mu$ m columns and one PLgel Resipore column (Agilent). Detection via UV/Vis, calibrated against polystyrene standards.

| Polymer        | Mn (from GPC) | Mw (from GPC) | PDI  |
|----------------|---------------|---------------|------|
| PLGA precursor | 52,089        | 111,233       | 2.14 |

- **Structure of PLGA-FKB350 copolymers**



Material provide for research use only. Not for human use.