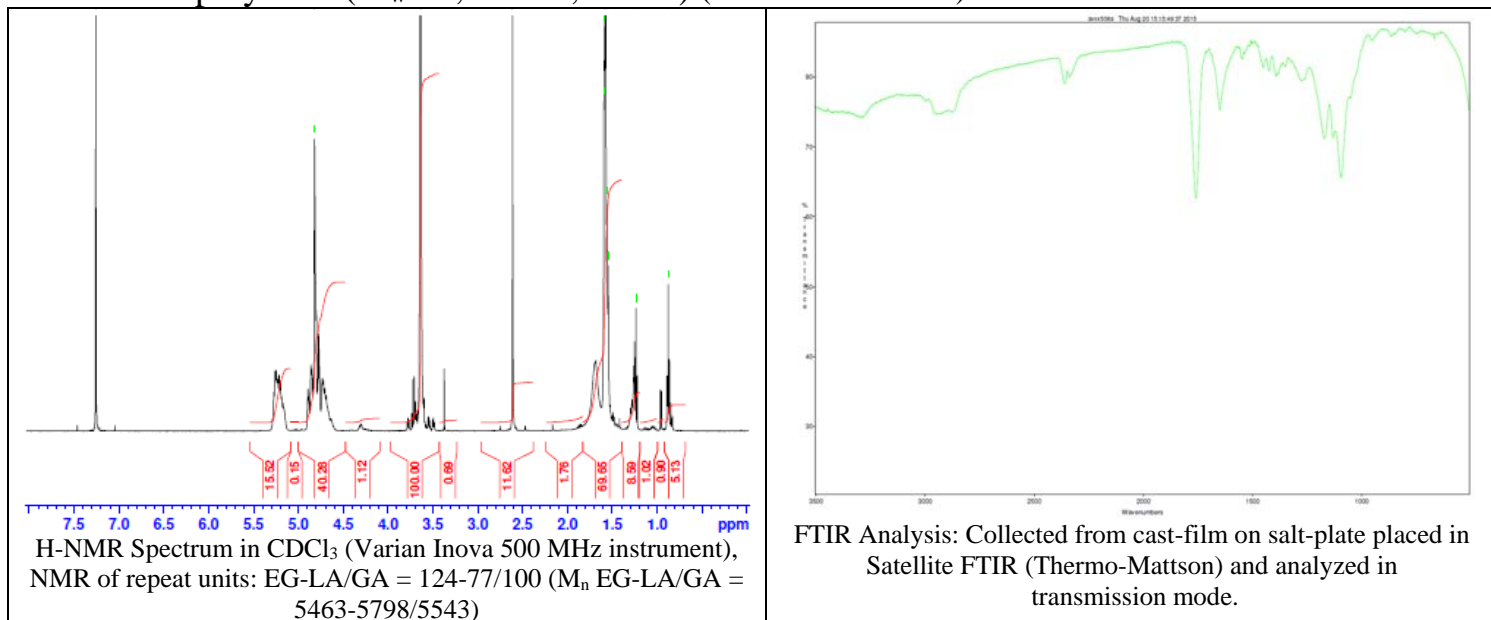


No. AV19

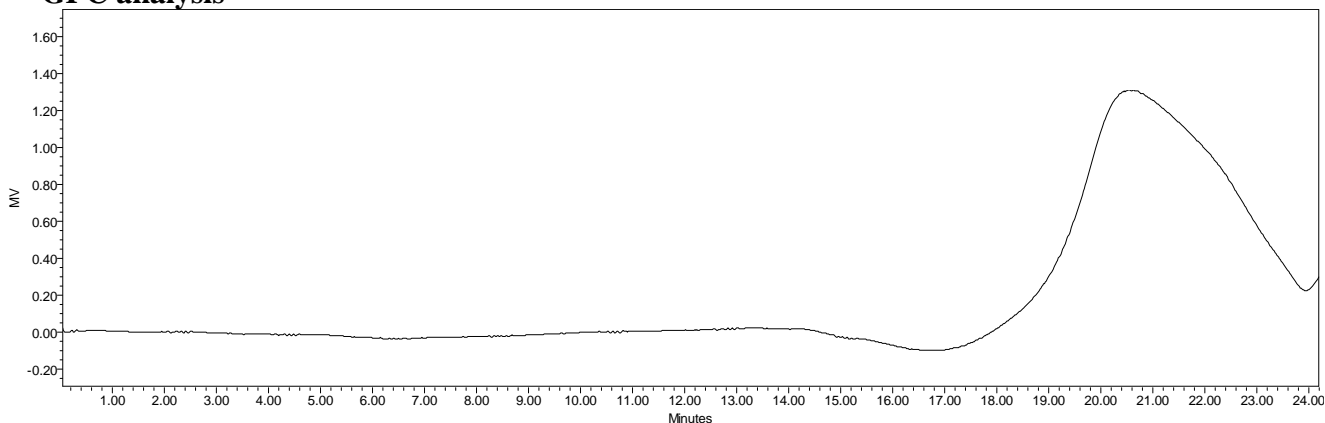
Certificate of Analysis

Product Name: Methoxy-Poly(ethylene glycol)-b-Poly(lactide-co-glycolide)-FKB350 copolymers ($M_w \sim 5,000-10,000\text{Da}$) (Lot#: 50811JSG-A) REV:A



FKB350 manufacturer data: Max absorbance: 352 nm, Max emission: 408nm, common filter set: DAPI

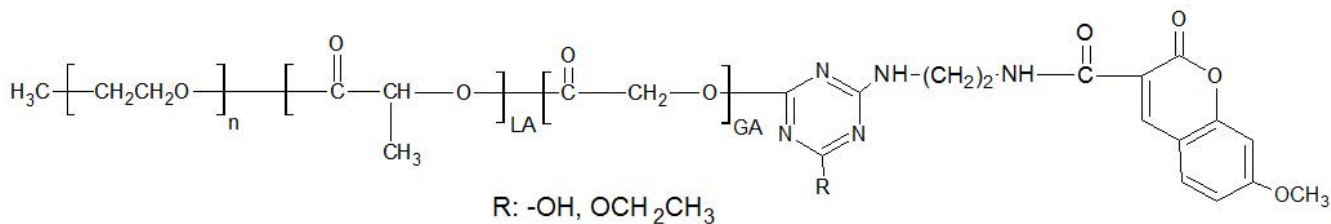
• GPC analysis



Analysis Method: Waters Breeze 2 system with 1 ml/min DCM flow across three Phenogel 5um columns (Phenomenex). Detection via refractive index, calibrated against polystyrene standards.

Polymer	M_n (from GPC)	M_w (from GPC)	PDI
mPEG-PLGA- FKB350	10,979	16,030	1.46
mPEG	5,488	5,847	1.06

• Structure of mPEG-PLGA- FKB350 copolymers



Material provide for research use only. Not for human use.