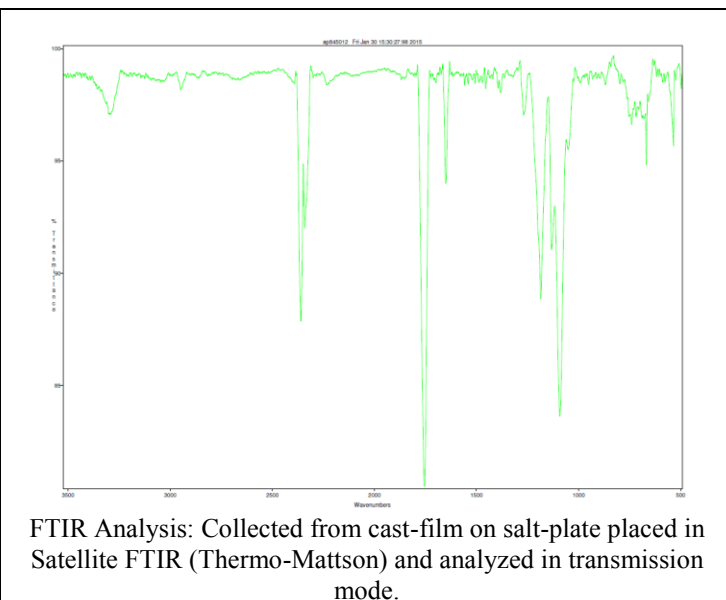
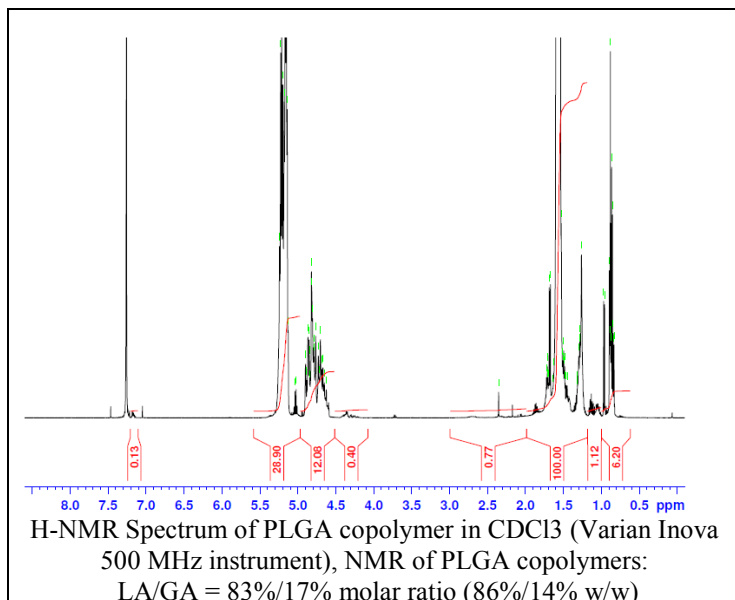


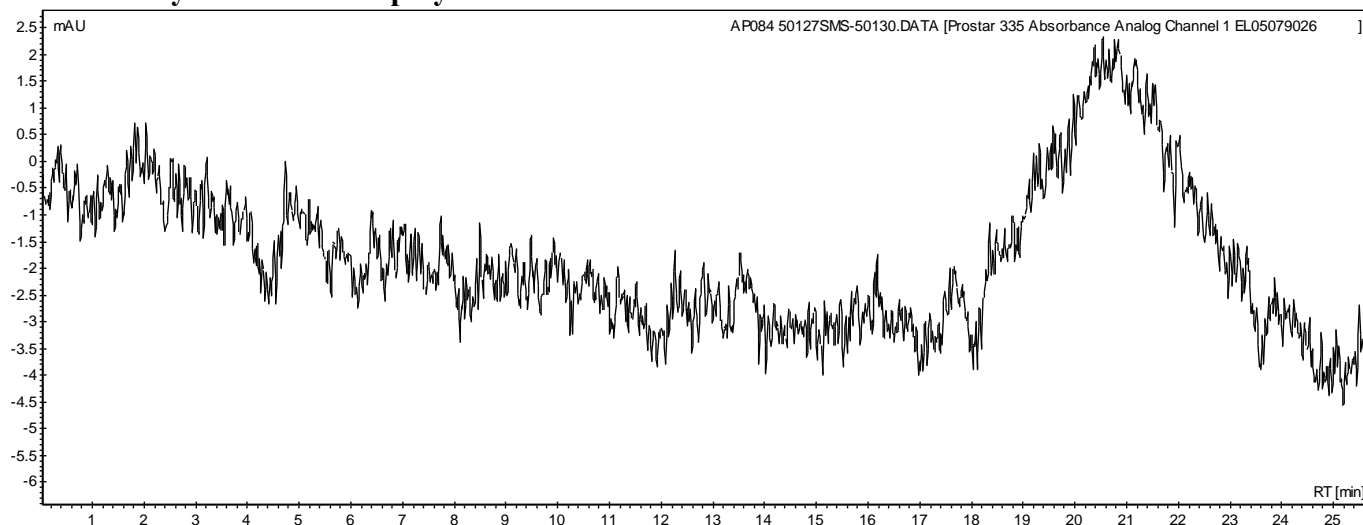
No. AP084

Certificate of Analysis

Product Name: Poly(lactide-co-glycolide) acid endcap (85:15 LA:GA, Mn: 10,000-15,000 Da)
(Lot#: 50127SMS) REV:A



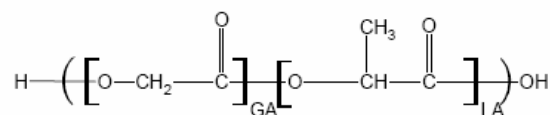
• GPC analysis of PLGA copolymers



Analysis Method: Varian Prostar system with 1 ml/min DCM flow across two Phenogel 5 μ m columns and one PLGel Resipore column (Agilent). Detection via UV/Vis, calibrated against polystyrene standards.

Polymer	Mn (from GPC)	Mw (from GPC)	PDI
PLGA	10,803	21,340	1.97

• Structure of PLGA copolymers



Material provided for research use only. Not for human use.