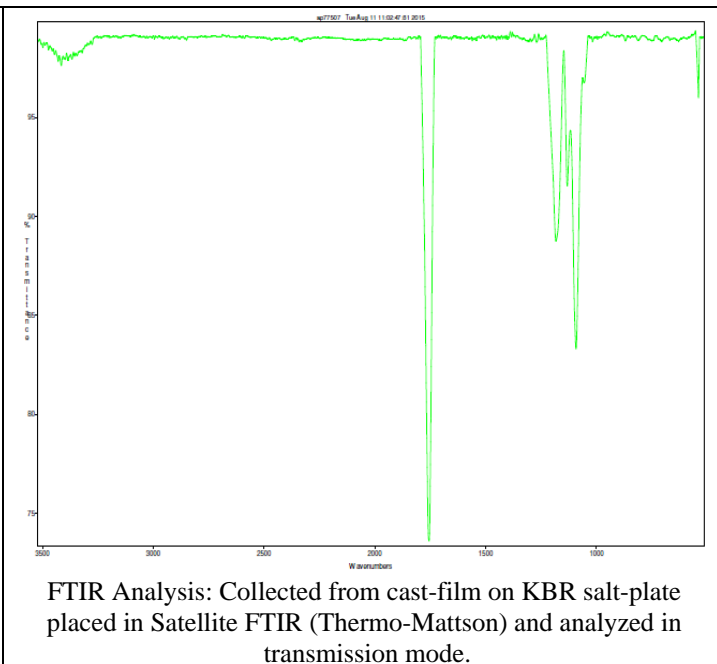
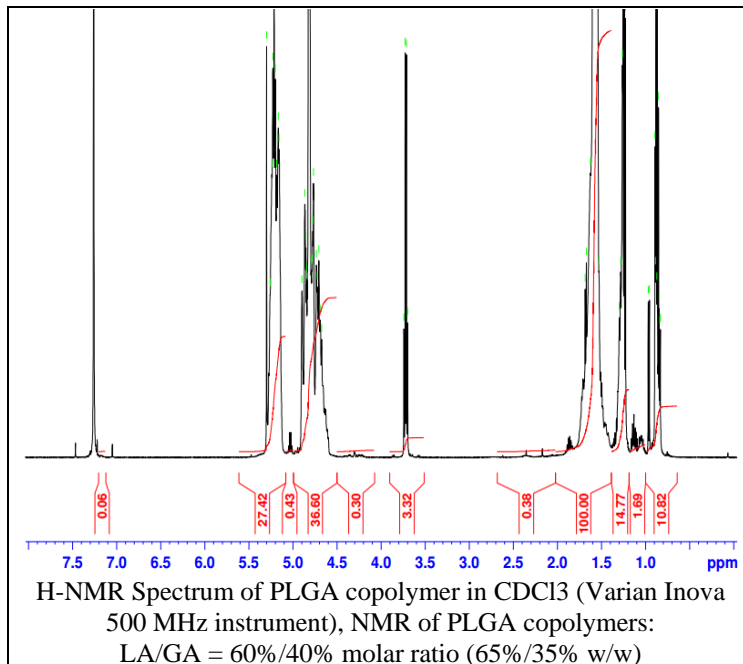


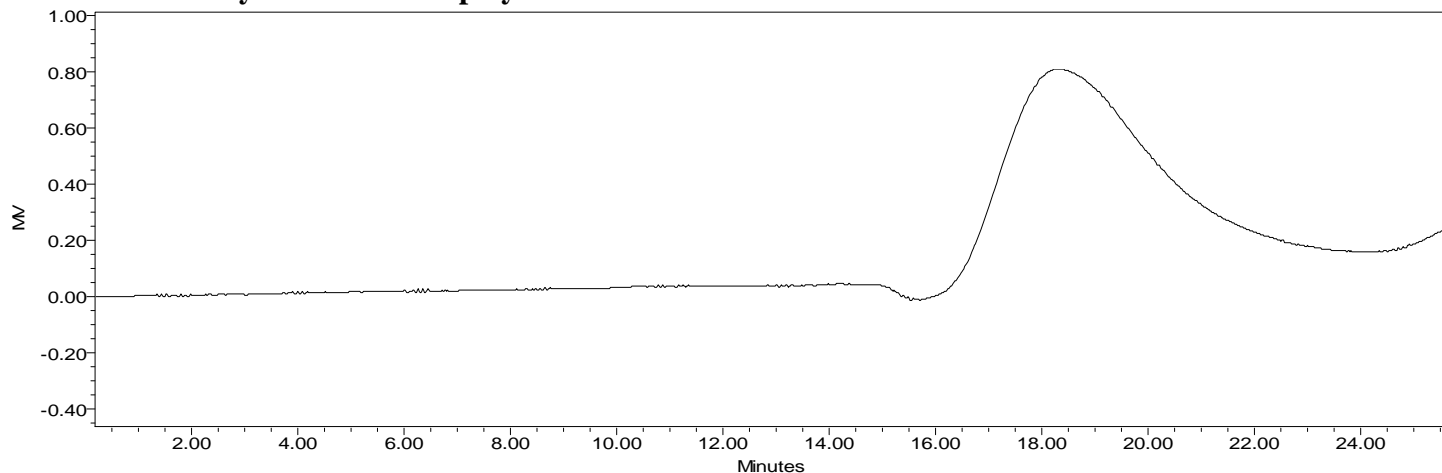
No. AP077

Certificate of Analysis

Product Name: Poly(lactic-co-glycolic) acid endcap (60:40 LA:GA, M_n : 25,000-35,000 Da)
(Lot#: 50731MJK)



• GPC analysis of PLGA copolymers



Analysis Method: Waters Breeze 2 system with 1 ml/min DCM flow across three Phenogel 5um columns (Phenomenex). Detection via refractive index, calibrated against polystyrene standards.

Polymer	M_n (from GPC)	M_w (from GPC)	PDI
PLGA	33,517	50,635	1.51

• Structure of PLGA copolymers



Material provided for research use only. Not for human use.