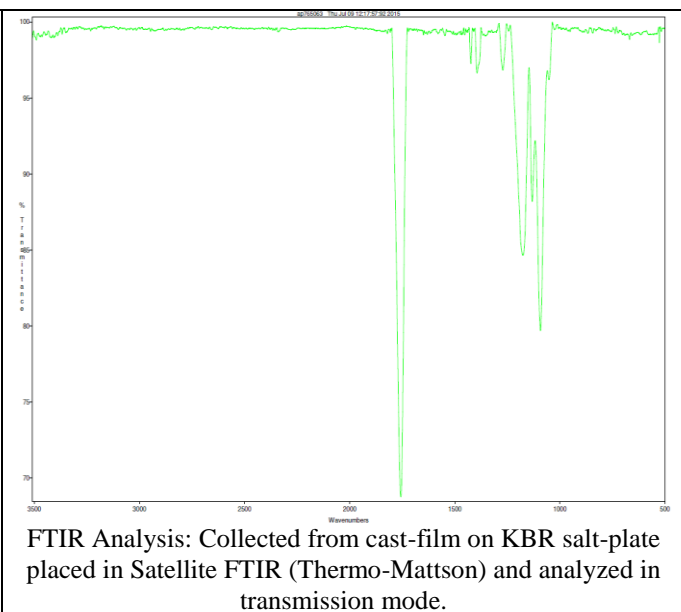
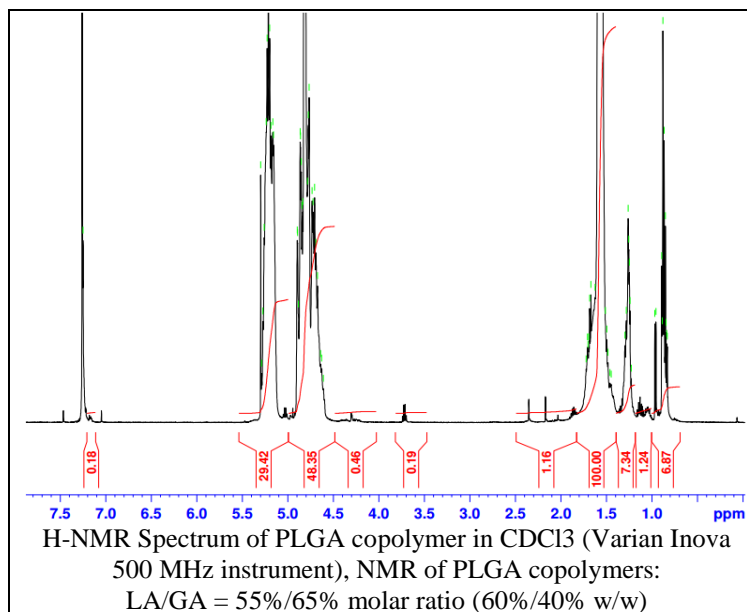


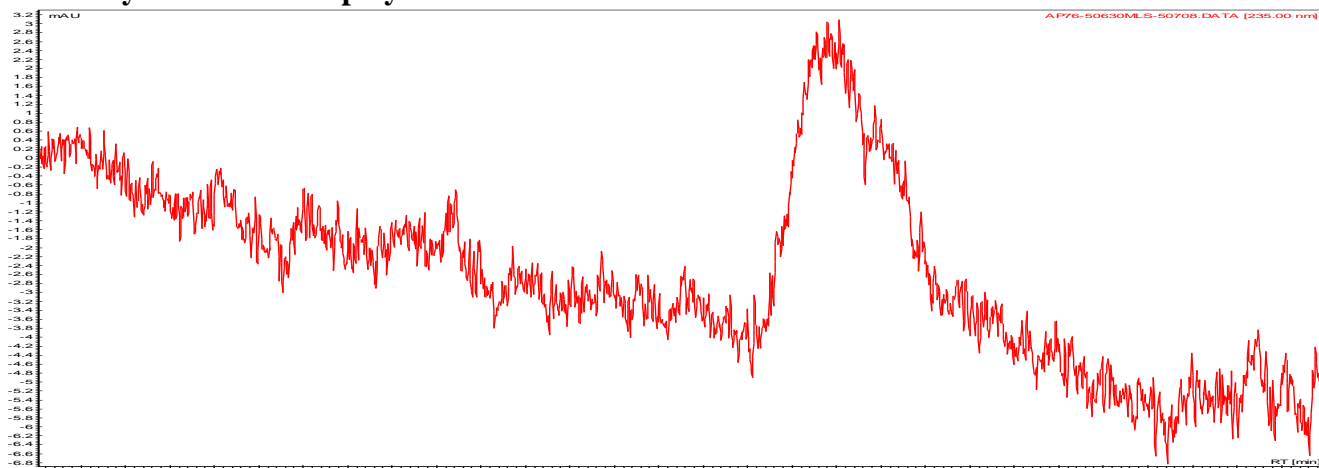
No. AP076

Certificate of Analysis

Product Name: Poly(lactic-co-glycolic) copolymers acid end cap (60:40 LA:GA, M_n : 35,000-45,000 Da) (Lot#: 50630MLS) REV:A



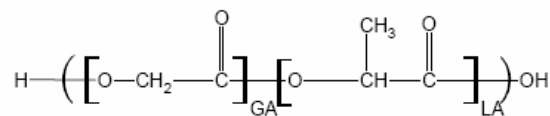
- **GPC analysis of PLGA copolymers**



Analysis Method: Varian Prostar system with 1 ml/min DCM flow across two 5 μ m Phenogel columns and one PLGel Resipore column (Agilent). Detection via UV/Vis, calibrated against polystyrene standards.

Polymer	M_n (from GPC)	M_w (from GPC)	PDI
PLGA	36,112	51,921	1.44

- **Structure of PLGA copolymers**



Material provide for research use only. Not for human use.