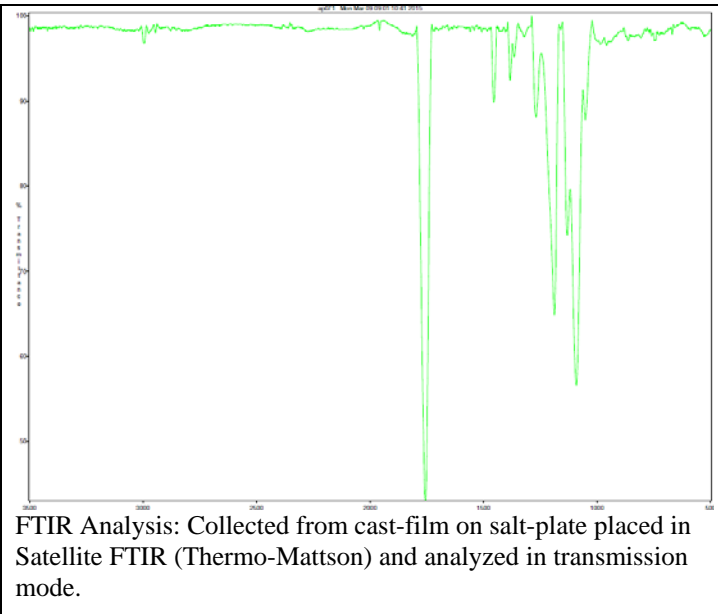
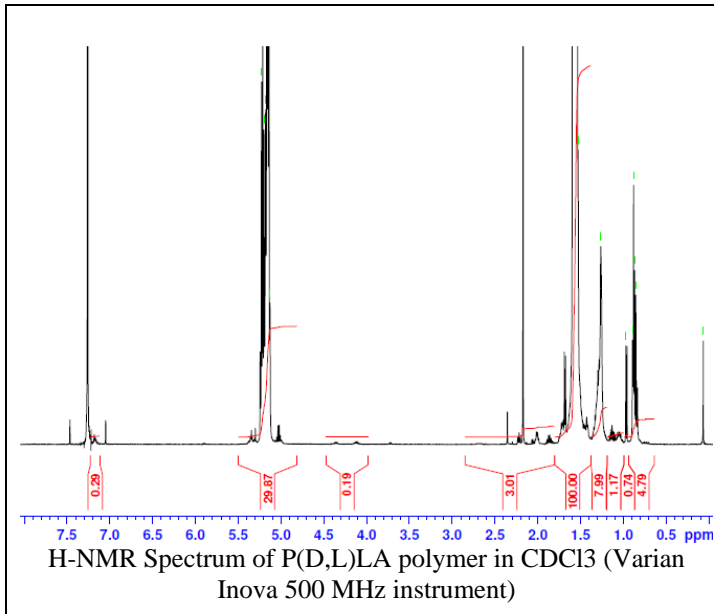


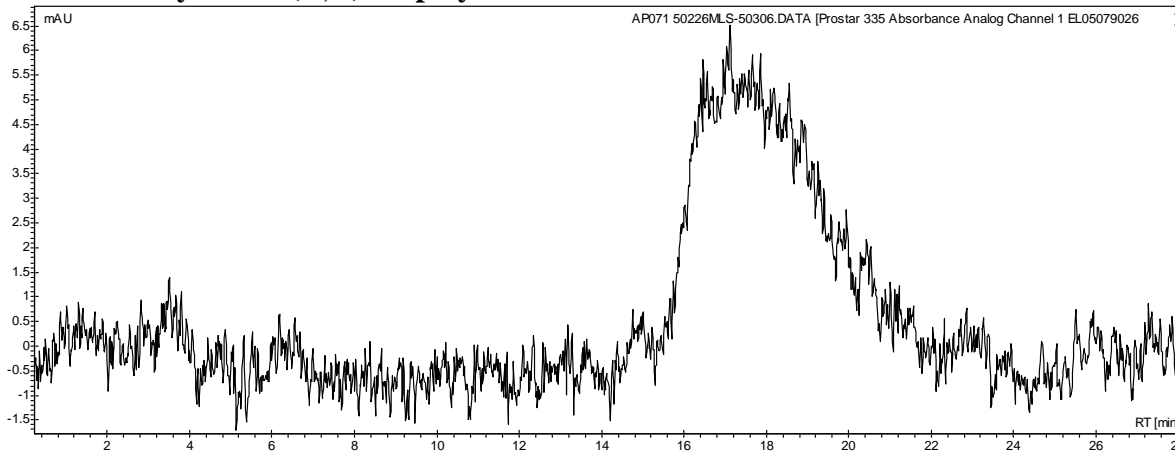
No. AP071

Certificate of Analysis

Product Name: Poly((D,L)L-lactide) ester endcap polymer (Mn 35,000-45,000Da) (Lot#: 50226MLS)



• GPC analysis of P(D,L)LA polymer



Analysis Method: Varian Prostar system with 1 ml/min DCM flow across two Phenogel 5 µm columns and one Resipore column (Agilent). Detection via UV/Vis, calibrated against polystyrene standards.

Polymer	Mn (from GPC)	Mw (from GPC)	PDI
P(D,L)LA	42545	125423	2.95

• Structure of P(D,L)LA polymer

