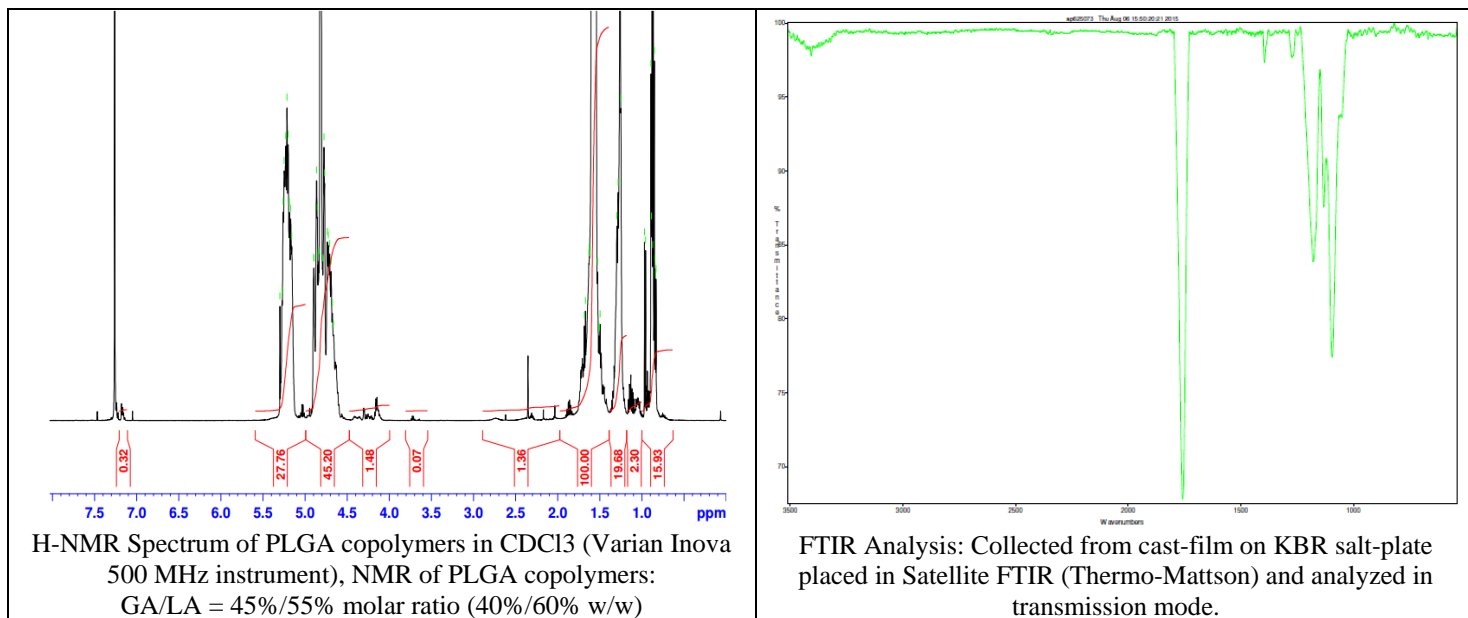


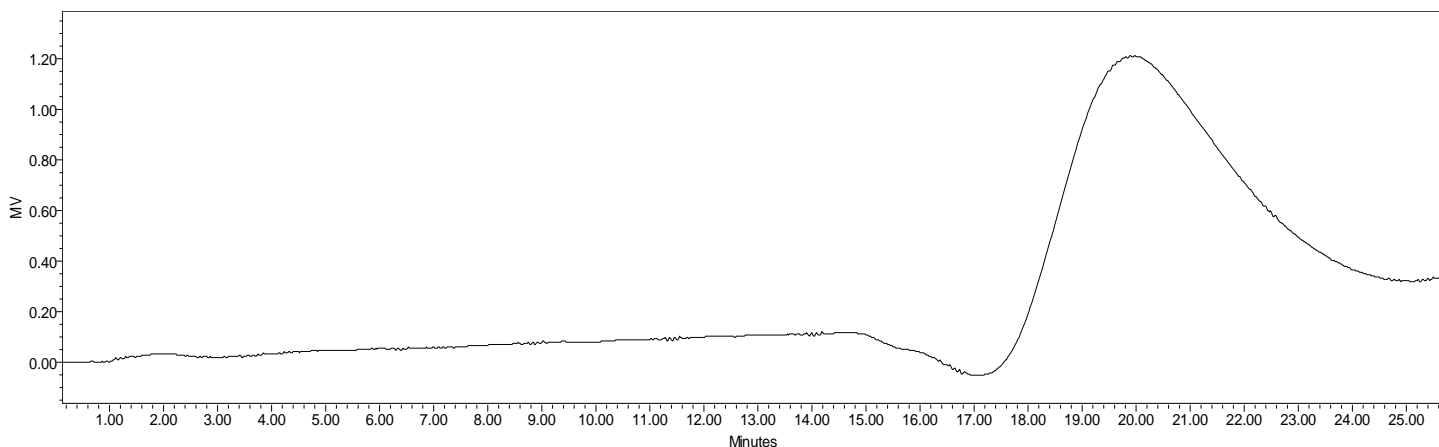
No. AP062

# Certificate of Analysis

Product Name: Poly(lactic-co-glycolic) copolymers ester endcap (50:50 LA:GA, Mn: 5,000-10,000 Da) (Lot#: 50731MLS)



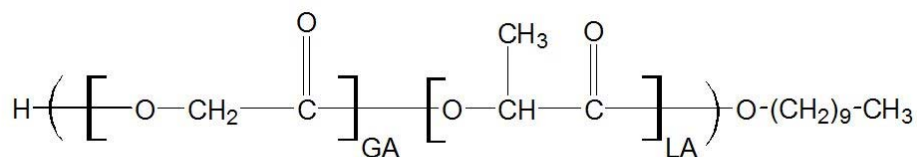
- **GPC analysis of PLGA copolymers**



Analysis Method: Waters Breeze 2 system with 1 ml/min DCM flow across three Phenogel 5um columns (Phenomenex). Detection via refractive index, calibrated against polystyrene standards.

Polymer	Mn (from GPC)	Mw (from GPC)	PDI
PLGA	9737	20,182	2.07

- **Structure of PLGA copolymers**



Material provided for research use only. Not for human use.