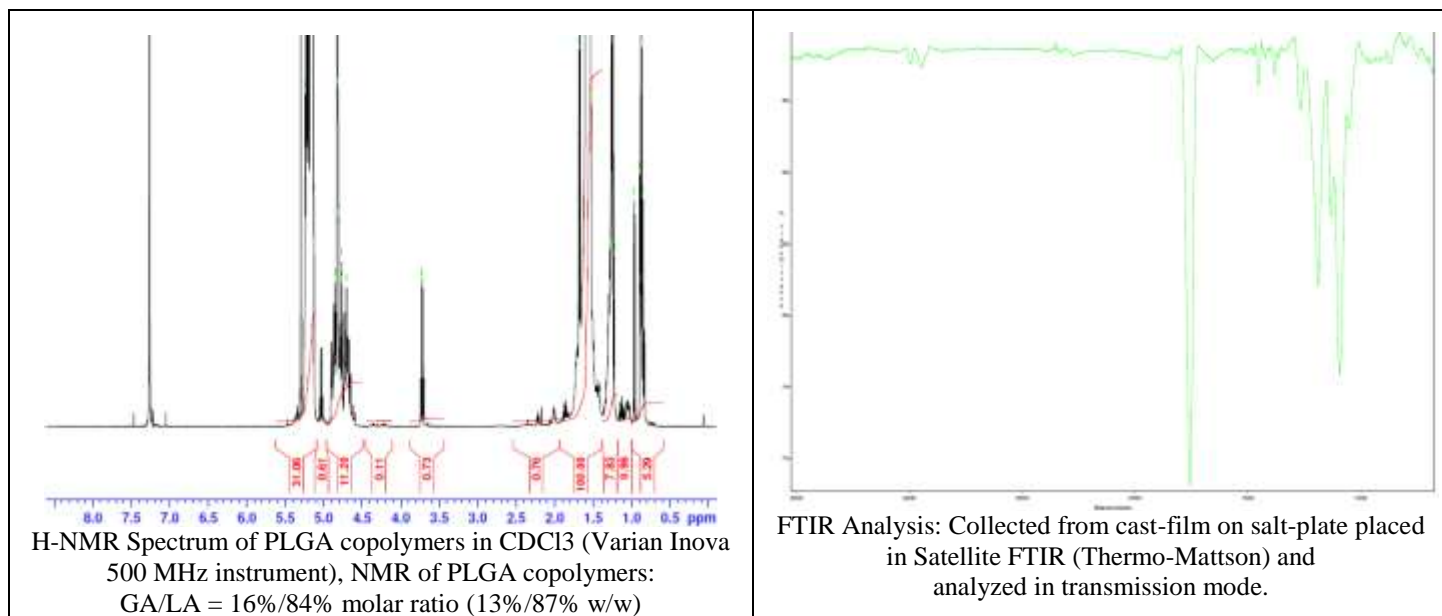


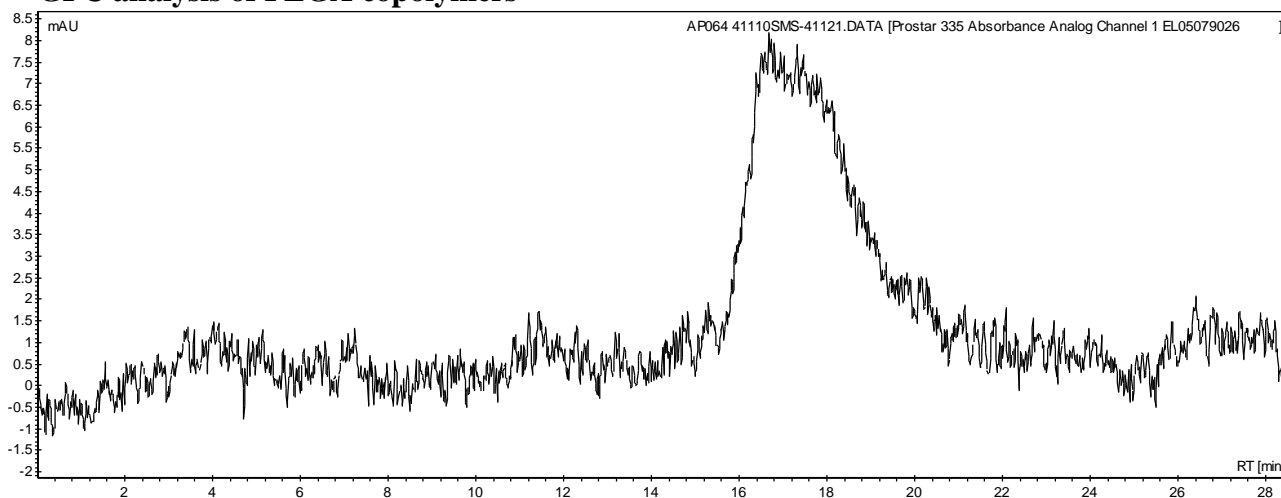
No. AP046

# Certificate of Analysis

Product Name: Poly(lactic-co-glycolic) copolymers acid endcap (85:15 LA:GA, Mn: 85,000 - 100,000 Da) (Lot#: 41110SMS) REV:A



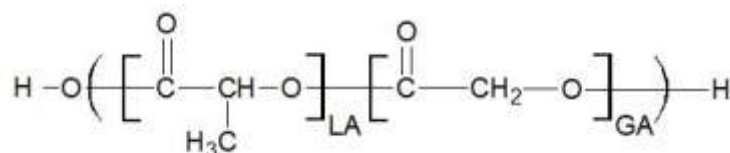
- **GPC analysis of PLGA copolymers**



Analysis Method: Varian Prostar system with 1 ml/min DCM flow across two Phenogel 5 $\mu$ m columns and one Resipore column (Agilent). Detection via UV/Vis, calibrated against polystyrene standards.

Polymer	Mn (from GPC)	Mw (from GPC)	PDI
PLGA	99,113	186,049	1.88

- **Structure of PLGA copolymers**



Material provided for research use only. Not for human use.