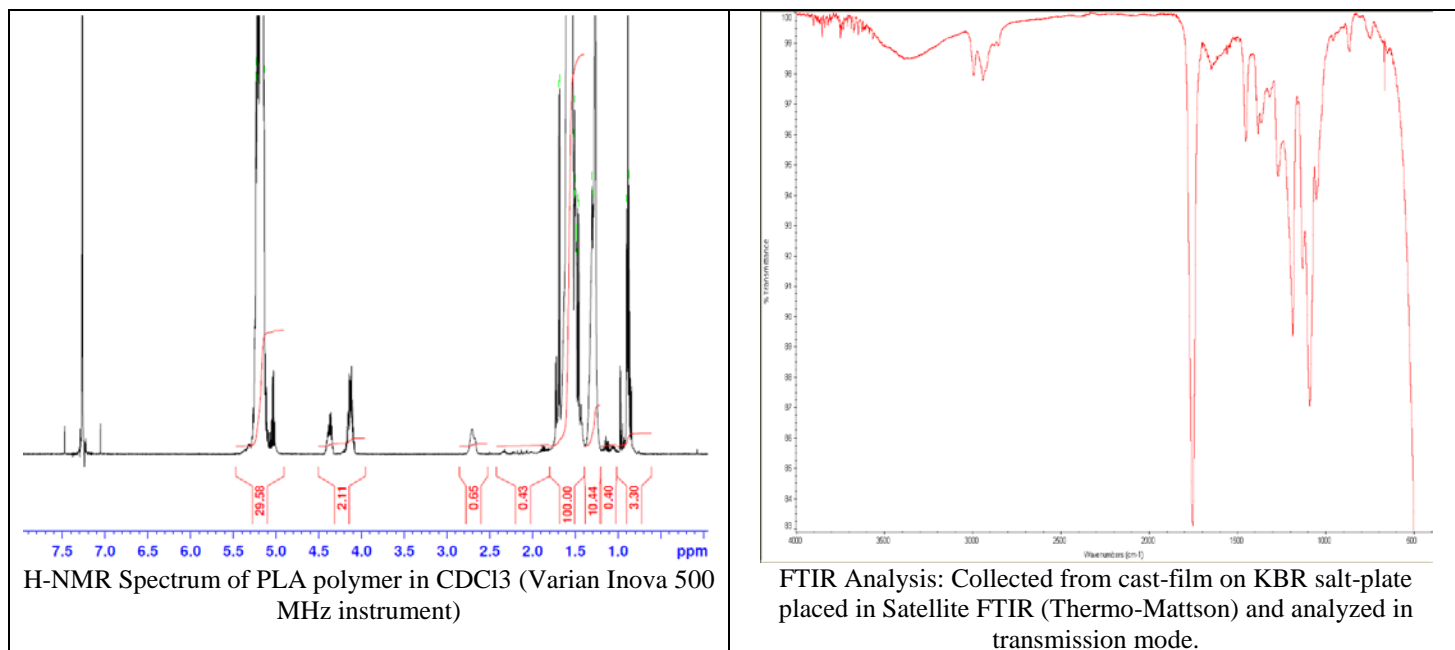
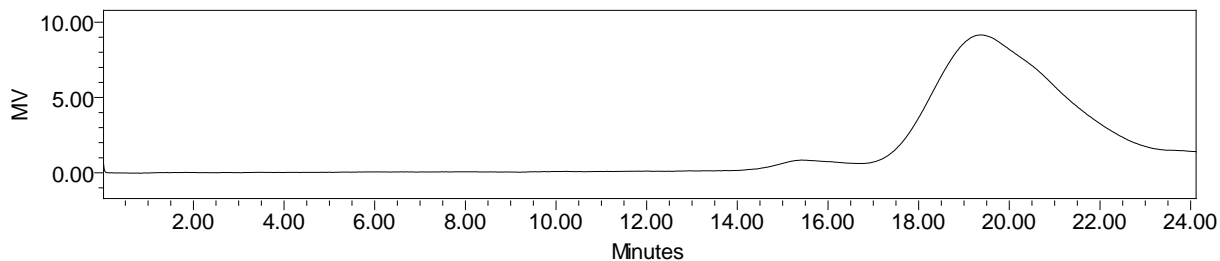


# No. AP204 Certificate of Analysis

Product Name: Poly(DL-lactide) ester endcap (Mn: 1,000-5,000 Da) (Lot#: 70303ELH-A)



- GPC analysis of PCL copolymers



- Analysis Method: Waters Breeze 2 system with 1 ml/min THF flow across three GPC columns. Detection via refractive index, calibrated against polystyrene standards.

Polymer	M <sub>n</sub> (from GPC)	M <sub>w</sub> (from GPC)	PDI
PLGA	4758	11,303	2.38

- Structure of copolymers

