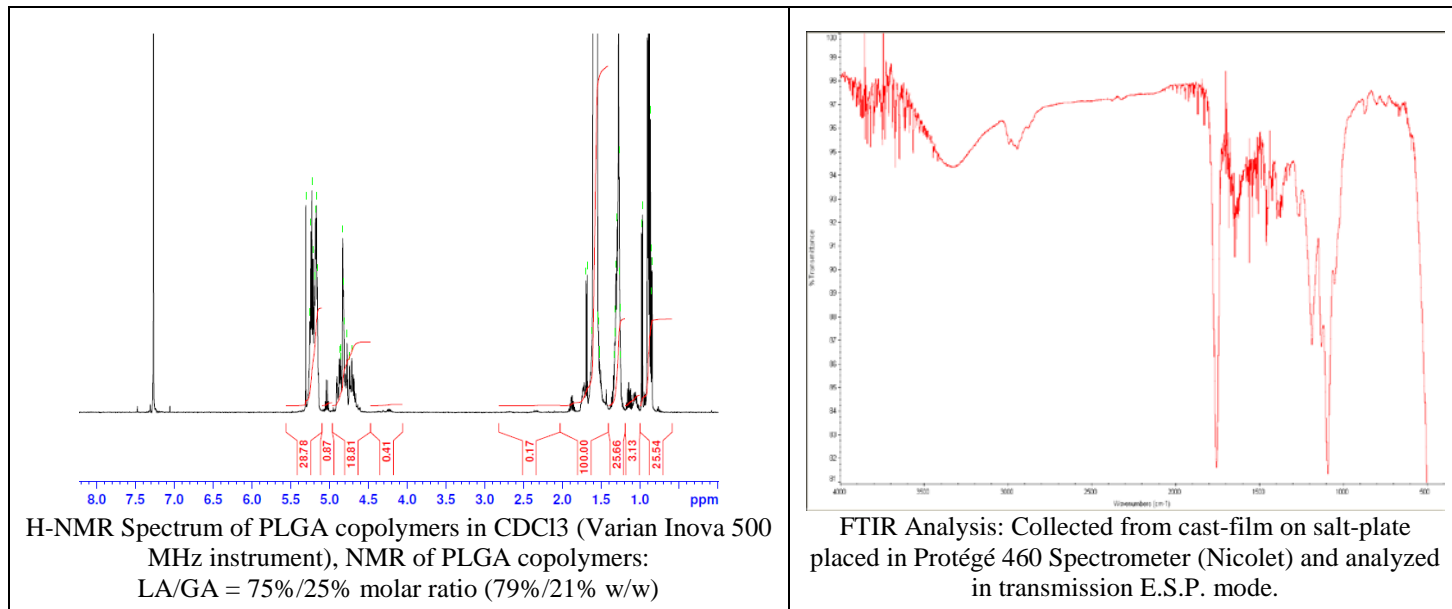


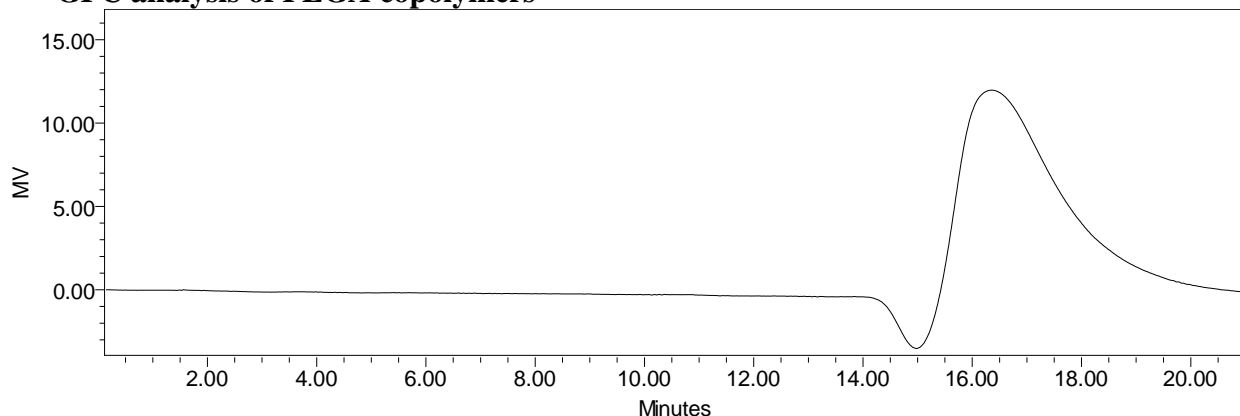
No. AP201

Certificate of Analysis

Product Name: Poly(lactic-co-glycolic) copolymers ester endcap (75:25 LA:GA, M_n : 45,000 - 55,000 Da) (Lot#: 70125SMS-A)



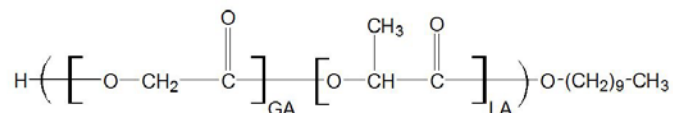
- **GPC analysis of PLGA copolymers**



Analysis Method: Waters Breeze 2 system with 1 ml/min THF flow across three GPC columns. Detection via refractive index, calibrated against polystyrene standards.

Polymer	M _n (from GPC)	M _w (from GPC)	PDI
PLGA	54,567	70,669	1.30

- **Structure of PLGA copolymers**



Material provide for research use only. Not for human use.