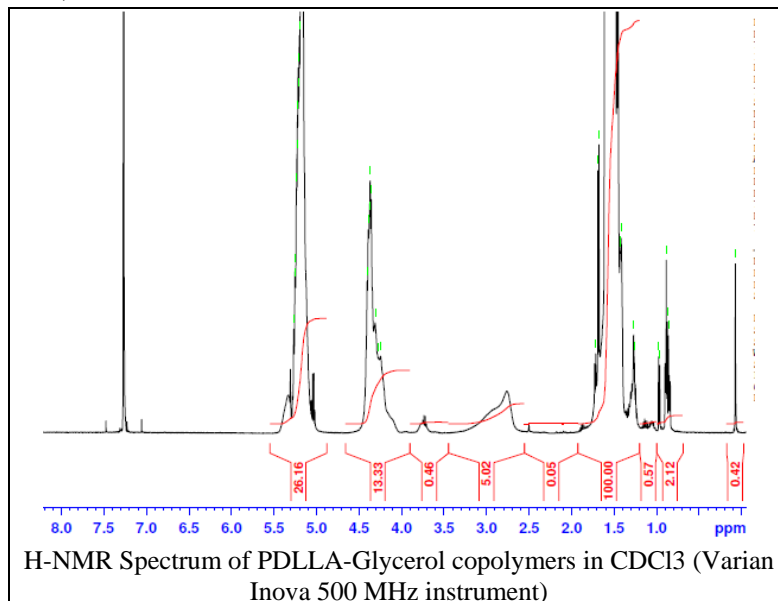


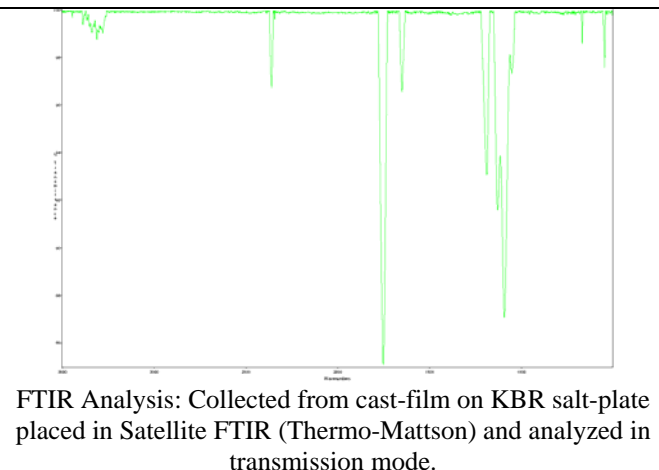
# No. AP183 Certificate of Analysis

Product Name: Poly((D,L)lactide) Glycerol-initiated branched polymer (Mn 1,000-5,000 Da)  
(Lot#: 60628BPR-A)

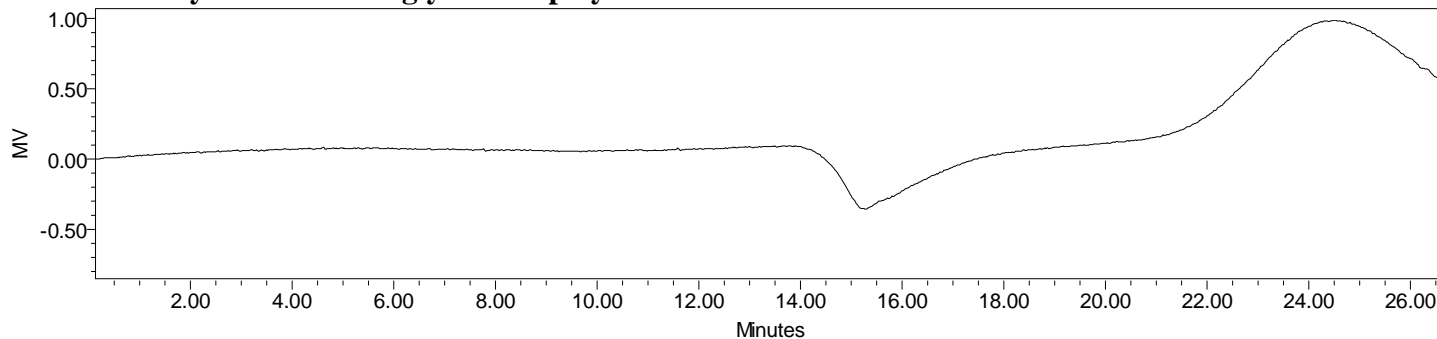
## H-NMR



## FTIR



- **GPC analysis of PDLLA-glycerol copolymers**



Analysis Method: Waters Breeze 2 system with 1 ml/min DCM flow across three 7.6 x 300mm GPC columns (mixed porosities). Detection via refractive index, calibrated against polystyrene standards.

Polymer	Mn (from GPC)	Mw (from GPC)	PDI
PDLLA-Glycerol*	1505	2024	1.34

\* - note analysis made against linear standards

- **Structure of PDLLA-Glycerol copolymers**

