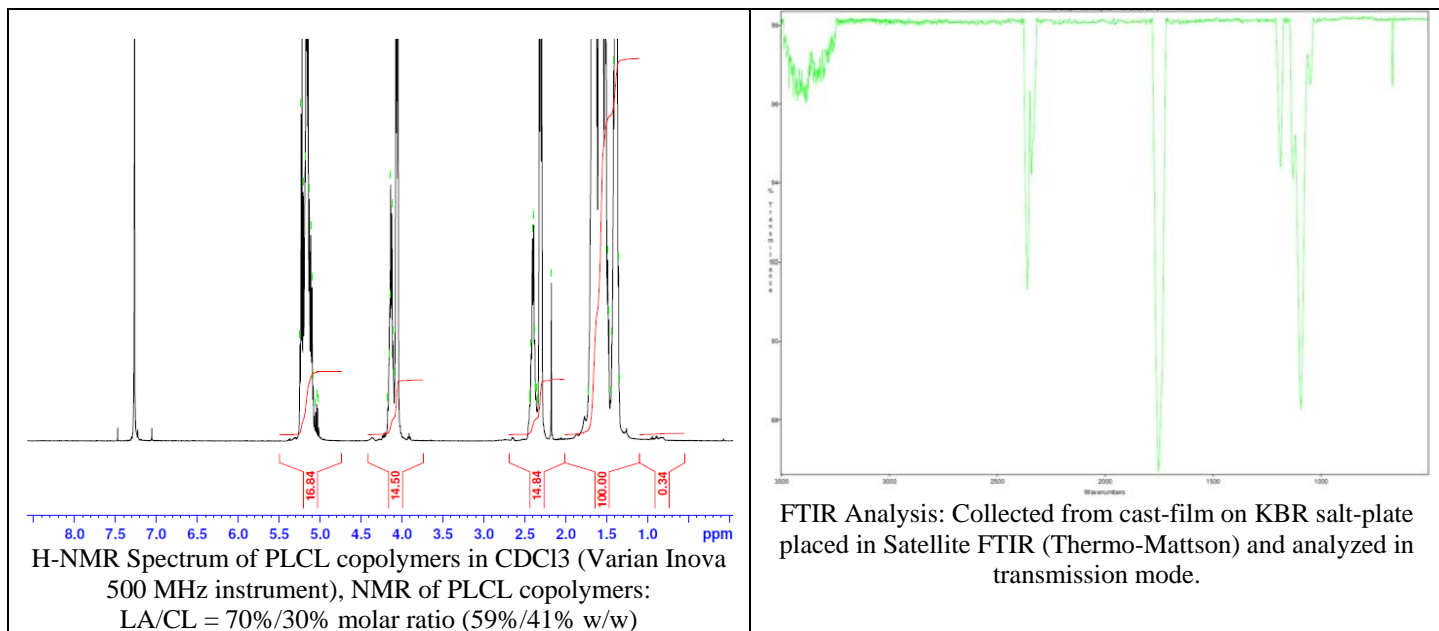


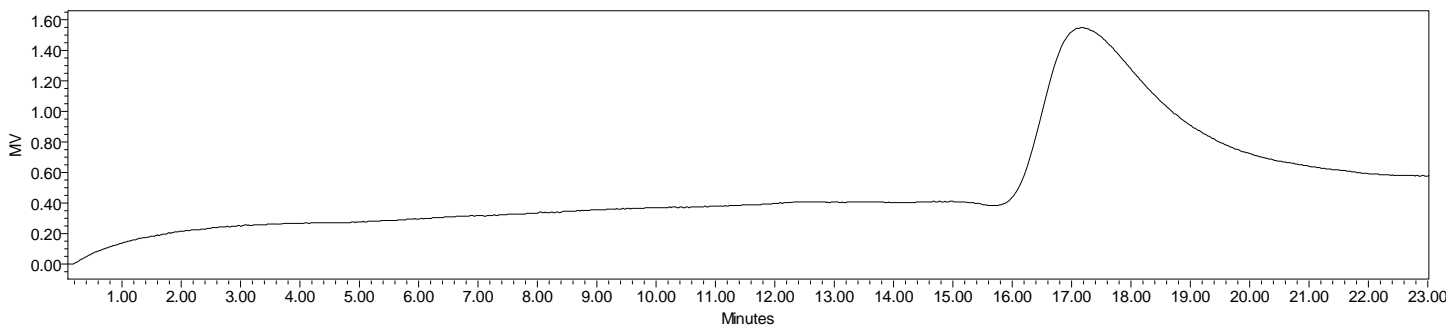
No. AP179

Certificate of Analysis

Product Name: Poly((D,L)Lactic-co-caprolactone) Copolymers acid end-capped (70:30 LA:CL, M_n : 35,000-45,000 Da) (Lot#: 60427BPR-A)



- GPC analysis of P(D,L)LaCL copolymers



Analysis Method: Waters Breeze 2 system with 1 ml/min DCM flow across three Phenogel 5um columns (Phenomenex). Detection via refractive index, calibrated against polystyrene standards.

Polymer	M_n (from GPC)	M_w (from GPC)	PDI
P(D,L)LaCL	44,512	72,854	1.64

- Structure of P(D,L)LaCL copolymers

