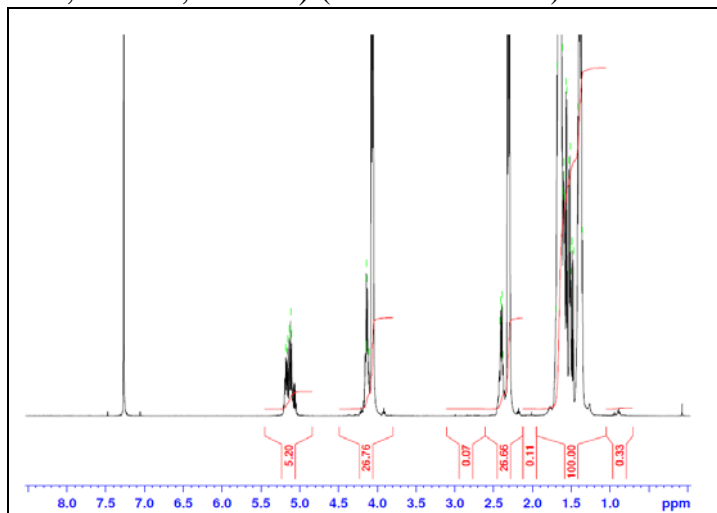


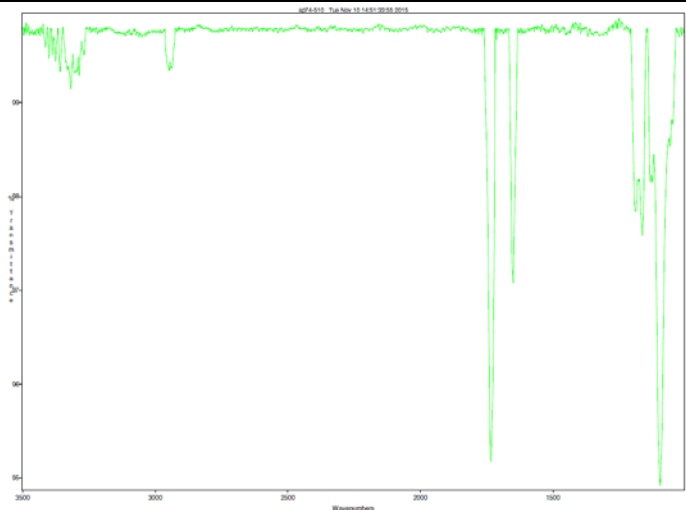
No. AP161

Certificate of Analysis

Product Name: Poly(L-Lactic-co-caprolactone) copolymer ester endcap (30:70 LA:CL, Mn: 55,000-65,000 Da) (Lot#: 51023ELH)

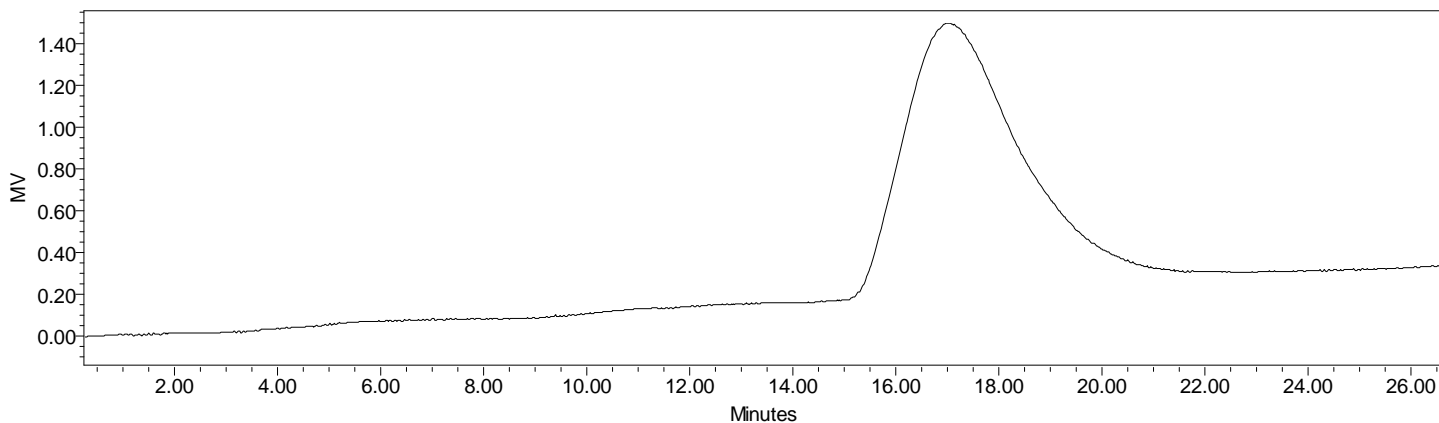


H-NMR Spectrum of P(L)LCL copolymers in CDCl₃ (Varian Inova 500 MHz instrument), NMR of P(L)LCL copolymers: LA/CL = 28%/72% molar ratio (20%/80% w/w)



FTIR Analysis: Collected from cast-film on salt-plate placed in Satellite FTIR (Thermo-Mattson) and analyzed in transmission mode.

• GPC analysis of P(L)LCL copolymers



Analysis Method: Waters Breeze 2 system with 1 ml/min DCM flow across three Phenogel 5um columns (Phenomenex). Detection via refractive index, calibrated against polystyrene standards.

Polymer	Mn (from GPC)	Mw (from GPC)	PDI
P(L)LCL	57,609	114,169	1.98

• Structure of P(L)LCL copolymers

