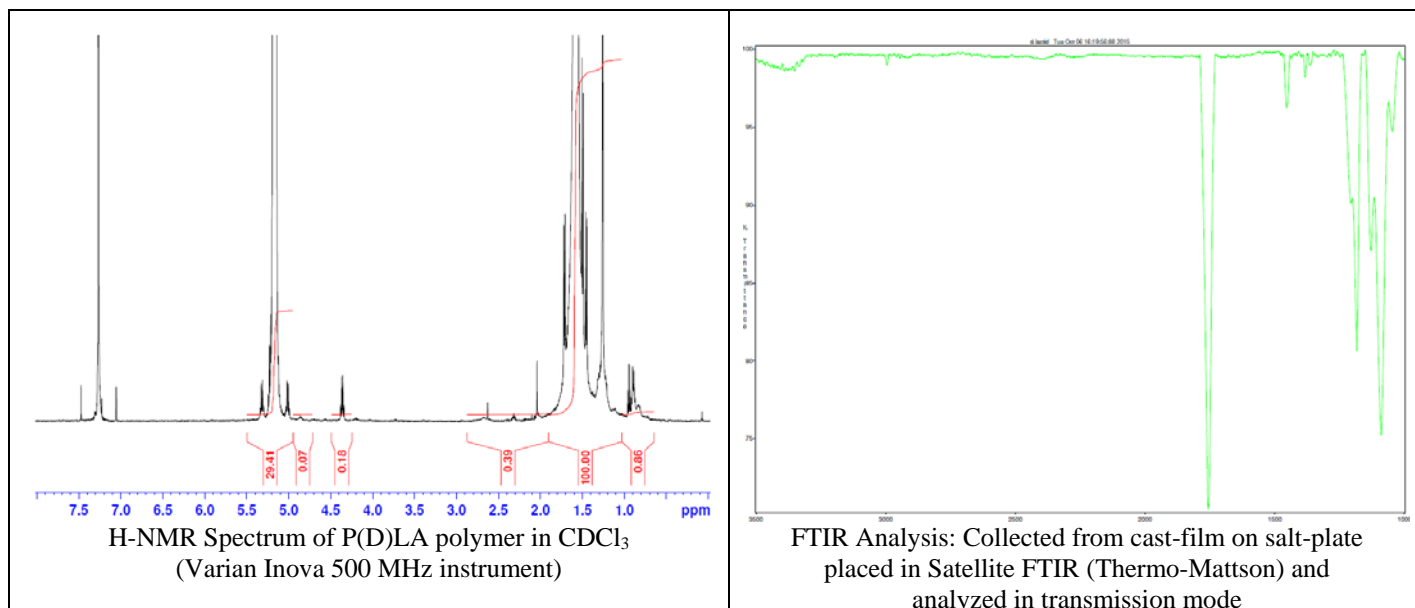


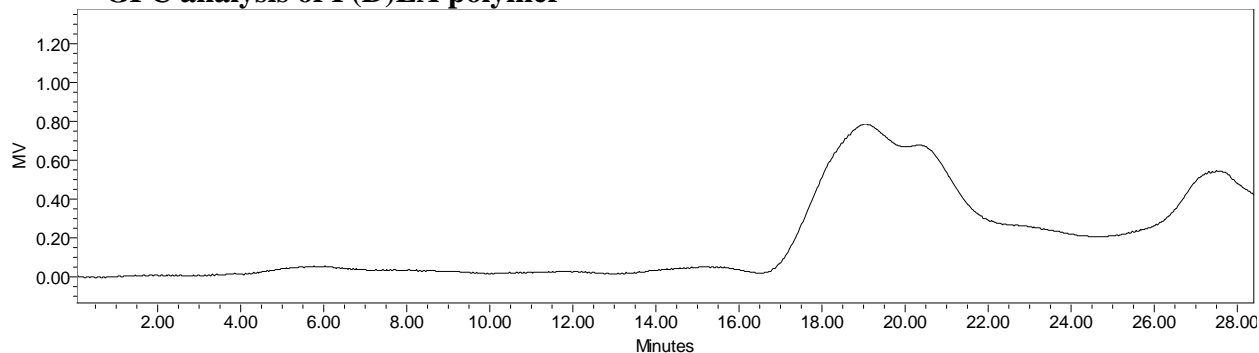
No. AP157

# Certificate of Analysis

Product Name: Poly(D-lactide) acid endcap ( $M_n$ : 20,000-35,000 Da) (Lot#: 50910BPR)



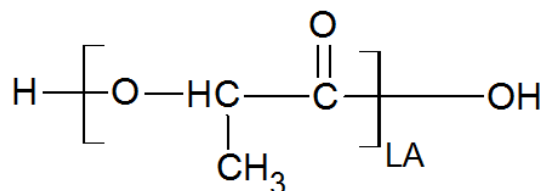
- **GPC analysis of P(D)LA polymer**



Analysis Method: Waters 2 system with 1 ml/min DCM flow across two Phenogel 5 $\mu$ m columns and one PLGel Resipore column (Agilent). Detection via UV/Vis, calibrated against polystyrene standards.

Polymer	$M_n$ (from GPC)	$M_w$ (from GPC)	PDI
P(D)LA	25080	42068	1.68

- **Structure of P(D)LA polymer**



Material provided for research use only. Not for human use.