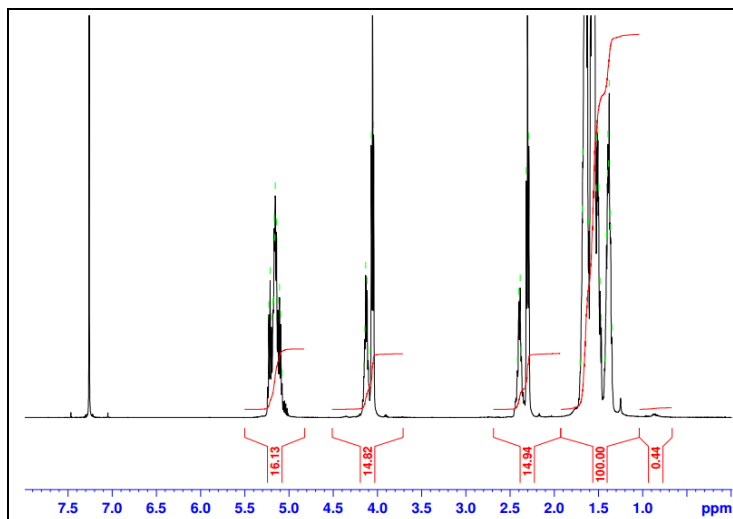


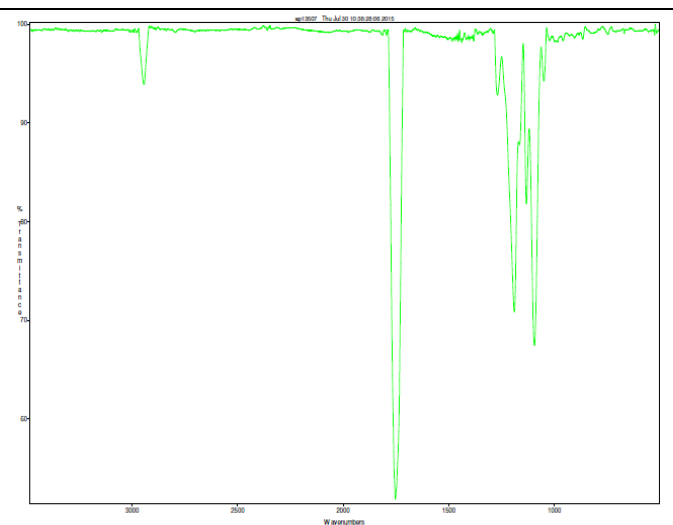
No. AP151

Certificate of Analysis

Product Name: Poly((D,L)Lactic-co-caprolactone) Copolymers acid end-capped (70:30 LA:CL, M_n : 75,000-85,000 Da) (Lot#: 50727AHT)

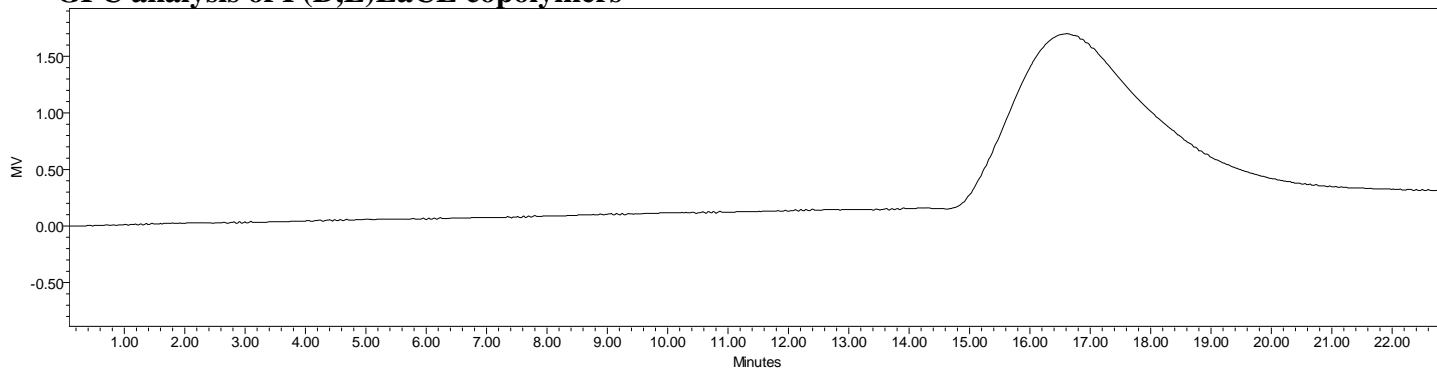


$^1\text{H-NMR}$ Spectrum of PLCL copolymers in CDCl_3 (Varian Inova 500 MHz instrument), NMR of PLCL copolymers: LA/CL = 69%/31% molar ratio (58%/42% w/w)



FTIR Analysis: Collected from cast-film on KBR salt-plate placed in Satellite FTIR (Thermo-Mattson) and analyzed in transmission mode.

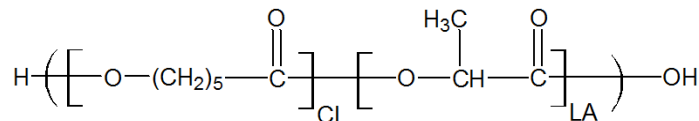
- GPC analysis of P(D,L)LaCL copolymers**



Analysis Method: Waters Breeze 2 system with 1 ml/min DCM flow across three Phenogel 5um columns (Phenomenex). Detection via refractive index, calibrated against polystyrene standards.

Polymer	M_n (from GPC)	M_w (from GPC)	PDI
P(D,L)LaCL	75,206	112,950	1.50

- Structure of P(D,L)LaCL copolymers**



Material provided for research use only. Not for human use.