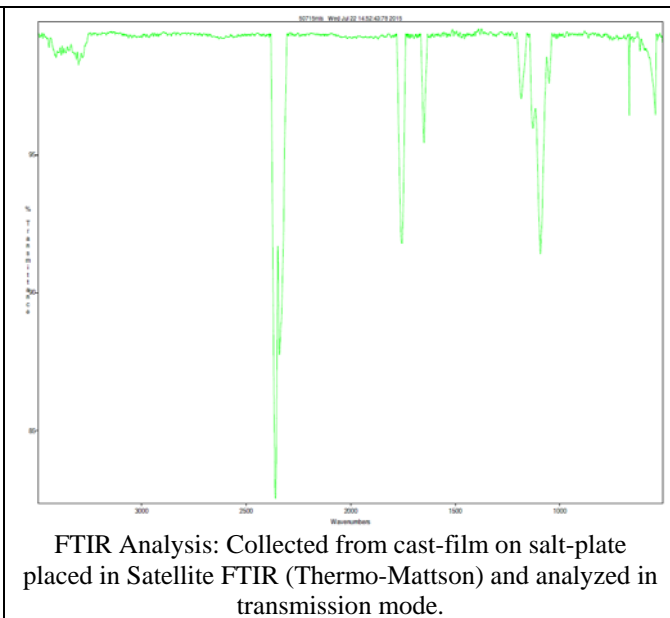
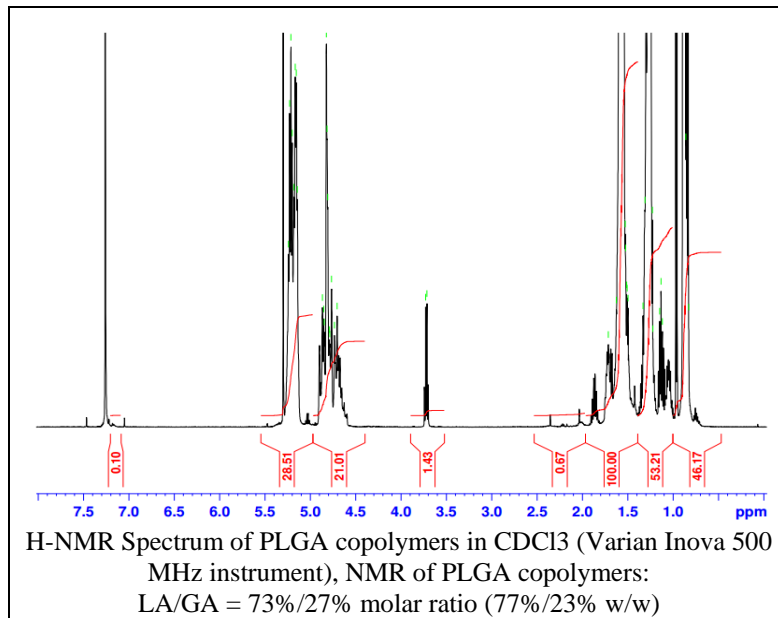


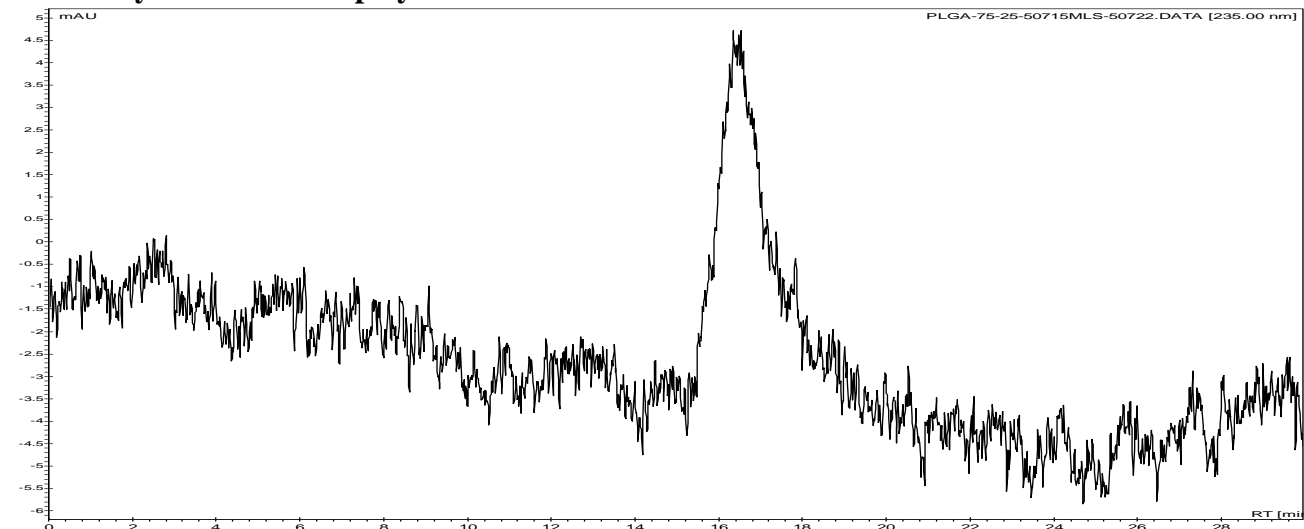
No. AP150

Certificate of Analysis

Product Name: Poly(lactic-co-glycolic) copolymers ester endcap (75:25 LA:GA, M_n : 125,000 - 150,000 Da) (Lot#: 50715MLS)



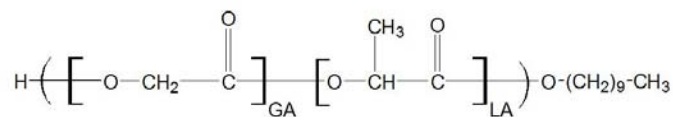
- **GPC analysis of PLGA copolymers**



Analysis Method: Varian Prostar system with 1 ml/min DCM flow across three Phenogel columns and one PLgel Resipore column (Agilent). Detection via UV/Vis, calibrated against polystyrene standards

Polymer	Mn (from GPC)	Mw (from GPC)	PDI
PLGA	129,872	172,347	1.33

- **Structure of PLGA copolymers**



Material provide for research use only. Not for human use.